

# Request to Fill a Survey Form

## - Kyoto Citizen's Social Interactions Survey -

We conduct this survey on various fields of city administration to find how the citizens evaluate their life, and we will make the best use of the outcomes to make our city better.

I would appreciate your understanding and sharing your time for this survey.

May 2021

門川 大作

Daisaku Kadokawa

Mayor of Kyoto

It will take about 10 minutes to complete the survey.

There is no need to write your name or address on your survey form or on the return envelope.



- The survey form should only be filled in by the person whose name is written on the envelope.
- Write your answers directly on to the survey form.

**Please return the survey in the enclosed envelope (no stamps needed)**

**Please post it by June 7 (Mon.), 2021**

## For Inquiry

Section of Kyoto Citizen's Social Interactions Survey  
Policy and Project Adjustment of Office of the Mayor,  
Kyoto City General Planning Bureau

Address: 488 Kami-honnoji-mae-cho, Teramachi-dori, Oike-agaru, Nakagyo-ku,  
Kyoto, 604-8571

Tel: 075-222-3035

Fax: 075-213-1066

- 3,000 people are randomly chosen among citizens aged 20 and above for this survey.
- The survey result will be formed in aggregate data and open to the public so that citizens can utilize it.

The survey result is used for the evaluation of policy measures taken by Kyoto City.  
The policy evaluation is available on the following Kyoto City website.

<http://www.city.kyoto.lg.jp/sogo/page/0000035589.html>



We look forward to your opinions and suggestions regarding the policy evaluation of Kyoto City.

**Online:**

<https://www.city.kyoto.lg.jp/sogo/page/0000253980.html>



**By phone or fax:**

Section of Kyoto Citizen's Social Interactions Survey  
Policy and Project Adjustment of Office of the Mayor,  
Kyoto City General Planning Bureau  
Tel:075-222-3035, Fax: 075-213-1066

# 《 Survey Form 》

① Interest in Kyoto City Administration  
Sense of happiness

②

③

④

Please circle one number that best reflects yourself.

Questions	Agree	Perhaps	Not sure	Perhaps not	Disagree
1. I am interested in the city administration.	a	b	c	d	e
2. I think I am happy now.	a	b	c	d	e

①

② Actual social experience

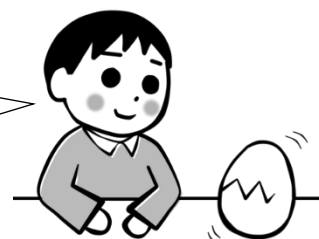
③

④

Please circle one number that best reflects yourself and your own images for each question. If you do not understand the meaning of the question, please leave the relevant answer unmarked.

Questions	Agree	Perhaps	Not sure	Perhaps not	Disagree
Environment					
1. The natural environment is well conserved where a wide variety of species exist.	a	b	c	d	e
2. There is an increasing number of people in all generations, who learn about the environment and put the knowledge into practice in daily life.	a	b	c	d	e
Human rights and Gender equality					
3. There are places for a wide variety of people where they can work actively by fulfilling their potential, and chances for them to have a suitable work style.	a	b	c	d	e
4. Violence and sexual harassment across all genders are eradicated in the society.	a	b	c	d	e

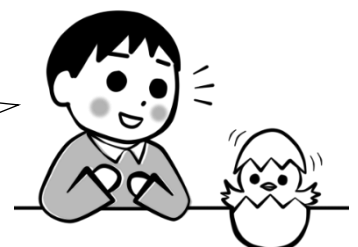
Answer with your intuition.



Questions	Agree	Perhaps	Not sure	Perhaps not	Disagree
<b>Civic life and community</b>					
5. Neighborhood associations conduct activities for each community, such as disaster and crime prevention, beautification, safety patrols and social support for elderly people by calling on them regularly.	a	b	c	d	e
6. Various groups such as NPOs, volunteers, universities, companies cooperate with each other in the local community activities.	a	b	c	d	e
<b>Secure of civic life</b>					
7. Connections between residents are strengthened in the community so that they can live in peace and safety without worrying about crimes.	a	b	c	d	e
8. There is an increasing number of consumers who have proper knowledge on consumption and act on their initiative.	a	b	c	d	e
<b>Culture</b>					
9. Artistic and cultural activities help the society and its economy flourish.	a	b	c	d	e
10. Personnel who are engaged in art and culture and their supporters are fostered, and artistic and cultural activities are actively undertaken.	a	b	c	d	e
<b>Sports</b>					
11. Citizens have chances to familiarize themselves with sports and enjoy them, and sports increase attractiveness of the city.	a	b	c	d	e
<b>Industry / Commerce</b>					
12. A wide variety of people with different backgrounds and abilities are well-motivated to work in Kyoto.	a	b	c	d	e
13. Entrepreneurs from all around Japan and from abroad assemble in Kyoto and world-class companies are established.	a	b	c	d	e
14. New products based on traditional craftsmanship are created to meet the needs of modern lifestyles, and the next generation to lead traditional industry is fostered.	a	b	c	d	e
15. Kyoto's food culture has been passed down and is still in progress.	a	b	c	d	e
<b>Tourism</b>					
16. The attractiveness of the city reflected in its cultural assets, landscape, food, shopping, etc. has increased, and tourists are very satisfied with the city.	a	b	c	d	e
17. People in the tourism industry work with pride and joy, and they work actively in the city.	a	b	c	d	e
18. International conferences, events, business meetings, training tours etc. are actively organized and people with different backgrounds gather in the city from all around the world.	a	b	c	d	e

Questions	Agree	Perhaps	Not sure	Perhaps not	Disagree
<b>Agriculture and forestry</b>					
19.Preventive measures against disasters, environmental changes, wildlife damages are widely taken.	a	b	c	d	e
20.There is an increasing number of opportunities for people to experience nature in farmland and forests, which encourages people to conserve nature.	a	b	c	d	e
<b>Universities</b>					
21.International students and researchers from around the world learn in the city and global human resources are fostered.	a	b	c	d	e
22.Human resources and outcomes of researches at universities help companies to develop and they are also helpful for the residents' daily living in Kyoto.	a	b	c	d	e
23.A wide variety of students from Japan and overseas study in Kyoto, which is famous as the "City of Universities" as well as the "City of Students."	a	b	c	d	e
<b>Globalization</b>					
24.Kyoto has charms to attract people from all around the world to visit there to study or on business etc.	a	b	c	d	e
25.The city actively exchanges with overseas cities in various fields such as culture, economy, art and it contributes to promoting the international community.	a	b	c	d	e
<b>Support for children / youth</b>					
26.Children are raised with respect, and they grow up healthy with hope.	a	b	c	d	e
27.Interaction with children through guardian activities and child-rearing support is well practiced in the local community.	a	b	c	d	e
<b>Welfare for the disabled</b>					
28.Employment and social participation of people with disabilities are promoted.	a	b	c	d	e
29.Barrier-free facilities and universal design products have become common, and the city is more livable for everyone.	a	b	c	d	e
<b>Community welfare and services</b>					
30.The community has become a place for residents to live with peace of mind, where they accept individual differences and support each other.	a	b	c	d	e

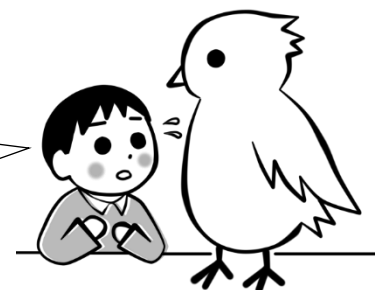
You're halfway done.

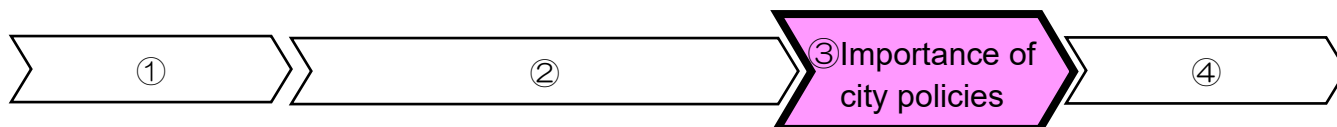


Questions	Agree	Perhaps	Not sure	Perhaps not	Disagree
<b>Health and longevity</b>					
31.Citizens try to maintain physical and mental health on their initiative.	a	b	c	d	e
32.Elderly people can stay for the rest of their lives in the community where they are used to living, even if they become in need of support and care.	a	b	c	d	e
<b>Health and medical care</b>					
33.Illegal lodging is eradicated, and a living environment has become safe and secure.	a	b	c	d	e
34.People can live with animals in harmony by caring about them and thinking of the best way to treat them.	a	b	c	d	e
<b>Formal education</b>					
35.Community as a whole, including parents and local residents, involves in educational activities such as participating in the school events.	a	b	c	d	e
36.Kyoto's unique education on traditional culture and the environment has been useful in fostering leaders to create a sustainable society.	a	b	c	d	e
<b>Lifelong learning</b>					
37.Various institutions such as libraries offer plenty of learning opportunities, and the citizens take advantage of them.	a	b	c	d	e
38.The whole communities and residents consider children as a treasure of our society and help them grow.	a	b	c	d	e
<b>Crisis management, Disaster prevention / mitigation</b>					
39.Resilience to disasters has been built based on effective collaboration among neighborhood associations and governments, etc.	a	b	c	d	e
40.Information sharing schemes are properly established for disasters, so that residents and tourists can evacuate immediately in case of a disaster.	a	b	c	d	e
<b>Pedestrian friendly city</b>					
41.It is fun and good for health to stroll around in the city.	a	b	c	d	e
42.City buses and the subway are useful for living in the city.	a	b	c	d	e
43.Cyclists follow rules when travelling in the city.	a	b	c	d	e
<b>Utilization of land / space and functional city layout</b>					
44.The city has become a comfortable place for people of all generations, where necessary facilities for daily life and a workplace are accessible on foot or by public transport.	a	b	c	d	e
45.The center of the city, the Kyoto Station area, the vicinities of Nijo Station, Tanbaguchi Station and Umekoji-Kyotonishi Station are vibrant and attractive.	a	b	c	d	e
46.Communities in the city promote various activities on their initiative such as to preserve their streetscapes as well as to build their vibrancy.	a	b	c	d	e

Questions	Agree	Perhaps	Not sure	Perhaps not	Disagree
<b>Landscape</b>					
47.The cityscape is decent in harmony with surrounding mountains.	a	b	c	d	e
48.Kyoto's unique streetscapes such as Kyo-machiya townhouses are conserved.	a	b	c	d	e
<b>Buildings</b>					
49.Newly built structures are barrier-free and eco-friendly.	a	b	c	d	e
50.Buildings are well maintained and used in a safe condition.	a	b	c	d	e
<b>Housing</b>					
51.People of all generations live in Kyoto safely and comfortably so that they want to continue living in the city.	a	b	c	d	e
52 There is few people who have trouble in renting thanks to increased options available, such as housing for elderly people, to meet various needs.	a	b	c	d	e
<b>Roads, parks and greenery</b>					
53.Parks are used for various purposes such as community activities and health promotion, as well as to create more comfortable urban environment.	a	b	c	d	e
54.There are an increasing number of safe, attractive and vibrant urban areas, where roads and parks are well developed in a good balance.	a	b	c	d	e
<b>Fire prevention and emergency first aid</b>					
55.The city has become safer for fires thanks to fire preventive measures taken by the whole residents in the city.	a	b	c	d	e
56.The emergency telephone consultation service in case of sudden illness or injury and the ambulance management system are well developed.	a	b	c	d	e
57.Preventive measures to minimize damage in case of disasters are widely taken by the whole community members.	a	b	c	d	e
<b>Water environment</b>					
58.There is an increasing number of people who care about water and its environment, and are aware of harmonious coexistence with water.	a	b	c	d	e
59.Water Supply and Sewerage Bureau offers various water-related services, which are useful and helpful for residents.	a	b	c	d	e

You're almost done.





Concerning each policy which we currently implement, please choose one number that reflects your thought the most and circle it.

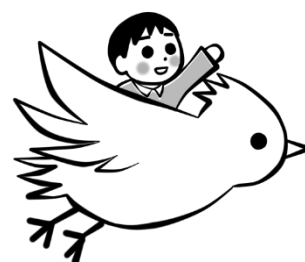
Policies concerning the Environment, Culture and Citizens' Life, etc.	Important	Perhaps Important	Not Sure	Perhaps not important	Not Important
1 Environment	a	b	c	d	e
2 Human rights and Gender equality	a	b	c	d	e
3 Civic life and community	a	b	c	d	e
4 Secure of civic life	a	b	c	d	e
5 Culture	a	b	c	d	e
6 Sports	a	b	c	d	e

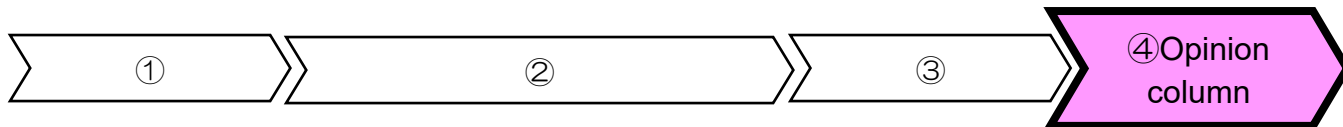
Policies concerning Industries, Tourism and Globalization	Important	Perhaps Important	Not Sure	Perhaps not important	Not Important
7 Industry / Commerce	a	b	c	d	e
8 Tourism	a	b	c	d	e
9 Agriculture and forestry	a	b	c	d	e
10 Universities	a	b	c	d	e
11 Globalization	a	b	c	d	e

Policies concerning Welfare, Public Health, Education, etc.	Important	Perhaps Important	Not Sure	Perhaps not important	Not Important
12 Support for children / youth	a	b	c	d	e
13 Welfare for the disabled	a	b	c	d	e
14 Community welfare and services	a	b	c	d	e
15 Health and longevity	a	b	c	d	e
16 Health and medical care	a	b	c	d	e
17 Formal education	a	b	c	d	e
18 Lifelong learning	a	b	c	d	e

Policies concerning City Planning, Living Environment, Infrastructures, etc.	Important	Perhaps Important	Not Sure	Perhaps not important	Not Important
19 Crisis management, Disaster prevention/mitigation	a	b	c	d	e
20 Pedestrian friendly city	a	b	c	d	e
21 Utilization of land / space and functional city layout	a	b	c	d	e
22 Landscape	a	b	c	d	e
23 Buildings	a	b	c	d	e
24 Housing	a	b	c	d	e
25 Roads, parks and greenery	a	b	c	d	e
26 Fire prevention and emergency first aid	a	b	c	d	e
27 Water environment	a	b	c	d	e

The next page is the last.





Please feel free to describe your opinion and suggestion to the city and on this survey.  
(Give us reasons especially for those who left it blank or answered “Disagree or Not sure”. )

About yourself. Please circle an appropriate number that reflects yourself.

**Gender**    a. Male    b. Female    c. (                      )

**Age**    a. 20's    b. 30's    c. 40's    d. 50's    e. 60's    f. 70's    g. 80 and over

**Occupation**    a. Self-employed or freelance    b. Company or public employee  
                         c. Homemaker    d. Student    e. Unemployed    f. Others(                      )

**Place of residence**    a. Kita-ku    b. Kamigyo-ku    c. Sakyo-ku    d. Nakagyo-ku  
                                 e. Higashiyama-ku    f. Yamashina-ku    g. Shimogyo-ku    h. Minami-ku  
                                 i. Ukyo-ku    j. Nishikyo-ku    k. Fushimi-ku

**Period as a resident of Kyoto City**  
                 a. Less than 5 years    b. 5 to 10 years    c. 11 to 30 years    d. 31 years and more

**This is the end of survey. Thank you very much for your cooperation.**

**Use the enclosed return-paid envelope and post the answer sheets by June 7(Mon).**