

Request to Fill a Survey Form

- Kyoto Citizen's Social Interactions Survey -

We conduct this survey on various fields of city administration to find how the citizens evaluate their life, and we will make the best use of the outcomes to make our city better.

I would appreciate your understanding and sharing your time for this survey.

May 2021

門川 大作

Daisaku Kadokawa

Mayor of Kyoto

It will take about 10 minutes to complete the survey.

There is no need to write your name or address on your survey form or on the return envelope.



- The survey form should only be filled in by the person whose name is written on the envelope.
- Write your answers directly on to the survey form.

Please return the survey in the enclosed envelope (no stamps needed)

Please post it by June 7 (Mon.), 2021

For Inquiry

Section of Kyoto Citizen's Social Interactions Survey
Policy and Project Adjustment of Office of the Mayor,
Kyoto City General Planning Bureau

Address: 488 Kami-honnoji-mae-cho, Teramachi-dori, Oike-agaru, Nakagyo-ku,
Kyoto, 604-8571

Tel: 075-222-3035

Fax: 075-213-1066

- 3,000 people are randomly chosen among citizens aged 20 and above for this survey.
- The survey result will be formed in aggregate data and open to the public so that citizens can utilize it.

The survey result is used for the evaluation of policy measures taken by Kyoto City.
The policy evaluation is available on the following Kyoto City website.

<http://www.city.kyoto.lg.jp/sogo/page/0000035589.html>



We look forward to your opinions and suggestions regarding the policy evaluation of Kyoto City.

Online:

<https://www.city.kyoto.lg.jp/sogo/page/0000253980.html>



By phone or fax:

Section of Kyoto Citizen's Social Interactions Survey
Policy and Project Adjustment of Office of the Mayor,
Kyoto City General Planning Bureau
Tel:075-222-3035, Fax: 075-213-1066

《 Survey Form 》

① Interest in Kyoto City Administration
Sense of happiness

②

③

④

Please circle one number that best reflects yourself.

Questions	Agree	Perhaps	Not sure	Perhaps not	Disagree
1. I am interested in the city administration.	a	b	c	d	e
2. I think I am happy now.	a	b	c	d	e

①

② Actual social experience

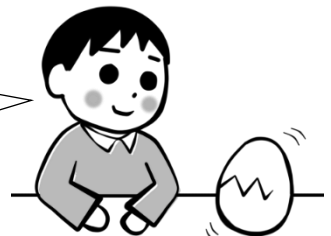
③

④

Please circle one number that best reflects yourself and your own images for each question. If you do not understand the meaning of the question, please leave the relevant answer unmarked.

Questions	Agree	Perhaps	Not sure	Perhaps not	Disagree
Environment					
1. Pro-environmental actions are taken society-wide.	a	b	c	d	e
2. A zero-waste lifestyle and business strategies, such as using reusable shopping bags, separating waste completely and enhancing recycling, are widely adopted.	a	b	c	d	e
Human rights and Gender equality					
3. People acknowledge each other, accept individual differences in lifestyles and beliefs, and build up relationships.	a	b	c	d	e
4. An ideal balance between a person's working life and private life including family life and community activities is achieved in the society.	a	b	c	d	e
Civic life and community					
5. The local community has become a secure place to live in where residents greet each other on a daily basis and are connected to each other.	a	b	c	d	e

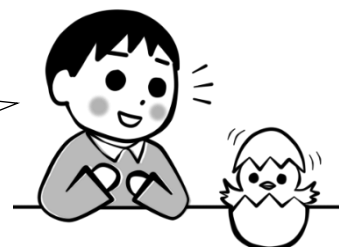
Answer with your intuition.



Questions	Agree	Perhaps	Not sure	Perhaps not	Disagree
Secure of civic life					
6. Citizens and businesses are actively engaged in crime prevention and traffic safety activities in the community.	a	b	c	d	e
7. Preventive measures against fraudulent business practices, etc. and measures for saving consumers are enhanced.	a	b	c	d	e
Culture					
8. Culture is blended in a daily life, and citizens can experience and enjoy it.	a	b	c	d	e
9. Cultural exchanges with other countries are enhanced and mutual understanding is developed.	a	b	c	d	e
10. Tangible and intangible cultural assets of Kyoto are cherished in a daily life and passed down from generation to generation.	a	b	c	d	e
Sports					
11. Citizens enjoy sports and lead a healthy and fulfilled life.	a	b	c	d	e
12. Citizens are connected with various people by playing sports together or through support activities for sports.	a	b	c	d	e
Industry / Commerce					
13. There are many companies and shops which have developed with the local community and are cherished in the community in Kyoto.	a	b	c	d	e
14. There are many world-class companies which have developed unique products in Kyoto.	a	b	c	d	e
15. Kyoto is a city where prosperous shops create vibrancy of the local areas and people can do shopping comfortably.	a	b	c	d	e
16. Safe and high-quality food is distributed.	a	b	c	d	e
Tourism					
17. Tourism benefits the local community by encouraging industries, creating job opportunities, preserving and developing culture and the landscape, and enhancing public transport, etc.	a	b	c	d	e
18. Resilient tourism, which is capable of handling various kinds of crisis such as disasters and infections, is achieved in the city.	a	b	c	d	e
Agriculture and forestry					
19. Agriculture and forestry have become an attractive industry and the successors and new leaders are fostered.	a	b	c	d	e
20. Agriculture and forestry support Kyoto's food culture and the traditional industry, and are useful in various fields such as environmental conservation and health promotion.	a	b	c	d	e

Questions	Agree	Perhaps	Not sure	Perhaps not	Disagree
Universities					
21.The city provides a supportive environment for education as the "City of Universities" and people can have chances to learn something unique to the city.	a	b	c	d	e
22.Students actively engage in community activities and become a person who supports the society in the future, and they also help the community become more thriving.	a	b	c	d	e
23.Graduates from universities in Kyoto are employed at companies in Kyoto and they continue to be active in the city.	a	b	c	d	e
Globalization					
24.International exchanges are carried out mainly by citizens and private sectors so that people of different generations have increased interests in foreign cultures and better understanding of them.	a	b	c	d	e
25.The city has become a place where everyone can understand each other regardless of nationalities, ethnic groups, cultures etc., and can feel cultural diversity.	a	b	c	d	e
Support for children / youth					
26.There is limitless potential for young people so that they act visualizing their future which they wish for.	a	b	c	d	e
27.Families who raise children share experiences with others and learn from each other, so that they can fully enjoy child-rearing.	a	b	c	d	e
Welfare for the disabled					
28.Understanding of disabilities is enhanced, and people with or without disabilities live at ease by acknowledging and supporting each other.	a	b	c	d	e
29.It has become easier for people with disabilities to continue living in the community where they are used to living.	a	b	c	d	e
Community welfare and services					
30.Various groups participate in community activities, and mutual support in the community is strengthened.	a	b	c	d	e
31.The government and the related organizations are concerned about personal issues such as hoarding houses and isolation in a community, and trying to resolve them.	a	b	c	d	e
Health and longevity					
32.Elderly people participate in the society energetically, and they are active in work and community activities.	a	b	c	d	e

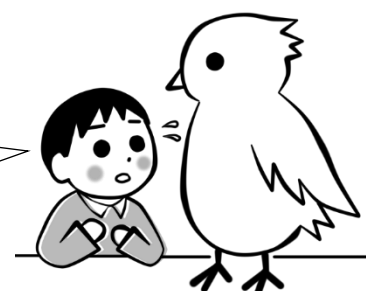
You're halfway done.

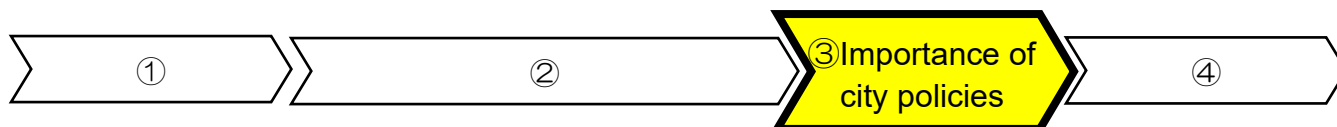


Questions	Agree	Perhaps	Not sure	Perhaps not	Disagree
Health and medical care					
33. There are reliable medical institutions that are easily accessible when needed.	a	b	c	d	e
34. Citizens' life is secured in case of infections and foodborne illness.	a	b	c	d	e
35. People can get safe food, and have a healthy environment with clean and safe public baths and barbers.	a	b	c	d	e
Formal education					
36. Special-needs education is offered for children in need of support, including children with disabilities and children who are unable to attend school.	a	b	c	d	e
37. School work environment has been improved so that teachers and school staff are actively engaged in school education.	a	b	c	d	e
Lifelong learning					
38. People of all generations have chances to learn and to put the knowledge into practice.	a	b	c	d	e
39. People of all generations interact with and learn from each other.	a	b	c	d	e
Crisis management, Disaster prevention / mitigation					
40. Evacuation plans are properly established for elderly people, persons with disabilities, children and international residents so that they can evacuate immediately in case of a disaster.	a	b	c	d	e
41. There is an increasing number of people who take preparedness measures for disasters on their initiative by securing large furniture, preparing an emergency kit, and participating in drills.	a	b	c	d	e
Pedestrian friendly city					
42. People travel in the city through integrated transport options such as public transport, walking and cycling on a daily basis, instead of using a car.	a	b	c	d	e
43. Public transport is convenient for travelling within the city.	a	b	c	d	e
Utilization of land / space and functional city layout					
44. The new areas such as Rakunan Shinto, that create new vibrancy, are being developed by various initiatives such as industrial agglomerations.	a	b	c	d	e
45. The city has become attractive, where each region of the city promotes its local culture and resources.	a	b	c	d	e
46. A new vibrancy has been brought to Rakusai New Town and Mukaijima New Town and they have become attractive.	a	b	c	d	e

Questions	Agree	Perhaps	Not sure	Perhaps not	Disagree
Landscape					
47.The rich natural and historic landscape is preserved.	a	b	c	d	e
48.A new cityscape is shaped where people can lead active lives and vibrancy is created.	a	b	c	d	e
Buildings					
49.Kyoto's unique narrow streets are improved to prevent any damages in case of earthquakes and fires, without losing the nostalgic atmosphere.	a	b	c	d	e
Housing					
50.Ideas and wisdom of housing in harmony with the community connections, environment and landscape are cherished in a daily living.	a	b	c	d	e
51.Remodeling and renovation are adequately made to old houses so that they are back in market with better quality for longer use.	a	b	c	d	e
Roads, parks and greenery					
52.Road network is well developed for safe transportation in case of disasters.	a	b	c	d	e
53.Roadside trees and parks which represent each season and brighten the atmosphere of the city are located nearby.	a	b	c	d	e
54.Roads and bridges in the city are well maintained in a safe condition.	a	b	c	d	e
Fire prevention and emergency first aid					
55.The whole residents in the city undertake initiatives to protect cultural assets and the city's unique streetscapes from fire.	a	b	c	d	e
56.City's fire and emergency service personnel are reliable in case of disasters and accidents.	a	b	c	d	e
Water environment					
57.Safe water supply and sewage systems are available everywhere in the city.	a	b	c	d	e
58.Heavy rains have not caused any flood damages in the local area.	a	b	c	d	e
59.The management of water and sewerage service is stable and people can continue to use it in the future.	a	b	c	d	e

You're almost done.





Concerning each policy which we currently implement, please choose one number that reflects your thought the most and circle it.

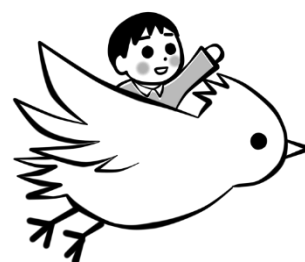
Policies concerning the Environment, Culture and Citizens' Life, etc.	Important	Perhaps Important	Not Sure	Perhaps not important	Not Important
1 Environment	a	b	c	d	e
2 Human rights and Gender equality	a	b	c	d	e
3 Civic life and community	a	b	c	d	e
4 Secure of civic life	a	b	c	d	e
5 Culture	a	b	c	d	e
6 Sports	a	b	c	d	e

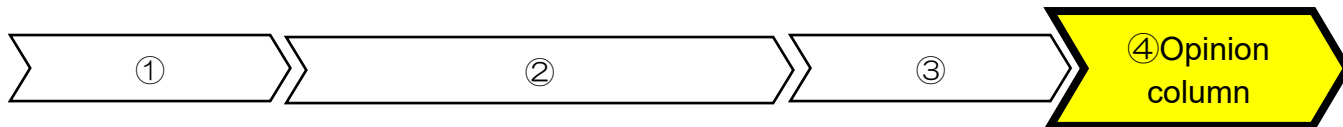
Policies concerning Industries, Tourism and Globalization	Important	Perhaps Important	Not Sure	Perhaps not important	Not Important
7 Industry / Commerce	a	b	c	d	e
8 Tourism	a	b	c	d	e
9 Agriculture and forestry	a	b	c	d	e
10 Universities	a	b	c	d	e
11 Globalization	a	b	c	d	e

Policies concerning Welfare, Public Health, Education, etc.	Important	Perhaps Important	Not Sure	Perhaps not important	Not Important
12 Support for children / youth	a	b	c	d	e
13 Welfare for the disabled	a	b	c	d	e
14 Community welfare and services	a	b	c	d	e
15 Health and longevity	a	b	c	d	e
16 Health and medical care	a	b	c	d	e
17 Formal education	a	b	c	d	e
18 Lifelong learning	a	b	c	d	e

Policies concerning City Planning, Living Environment, Infrastructures, etc.	Important	Perhaps Important	Not Sure	Perhaps not important	Not Important
19 Crisis management, Disaster prevention/mitigation	a	b	c	d	e
20 Pedestrian friendly city	a	b	c	d	e
21 Utilization of land / space and functional city layout	a	b	c	d	e
22 Landscape	a	b	c	d	e
23 Buildings	a	b	c	d	e
24 Housing	a	b	c	d	e
25 Roads, parks and greenery	a	b	c	d	e
26 Fire prevention and emergency first aid	a	b	c	d	e
27 Water environment	a	b	c	d	e

The next page is the last.





Please feel free to describe your opinion and suggestion to the city and on this survey.
(Give us reasons especially for those who left it blank or answered “Disagree or Not sure”.)

About yourself. Please circle an appropriate number that reflects yourself.

Gender a. Male b. Female c. ()

Age a. 20's b. 30's c. 40's d. 50's e. 60's f. 70's g. 80 and over

Occupation a. Self-employed or freelance b. Company or public employee
c. Homemaker d. Student e. Unemployed f. Others()

Place of residence a. Kita-ku b. Kamigyo-ku c. Sakyo-ku d. Nakagyo-ku
e. Higashiyama-ku f. Yamashina-ku g. Shimogyo-ku h. Minami-ku
i. Ukyo-ku j. Nishikyo-ku k. Fushimi-ku

Period as a resident of Kyoto City
a. Less than 5 years b. 5 to 10 years c. 11 to 30 years d. 31 years and more

This is the end of survey. Thank you very much for your cooperation.

Use the enclosed return-paid envelope and post the answer sheets by June 7(Mon).