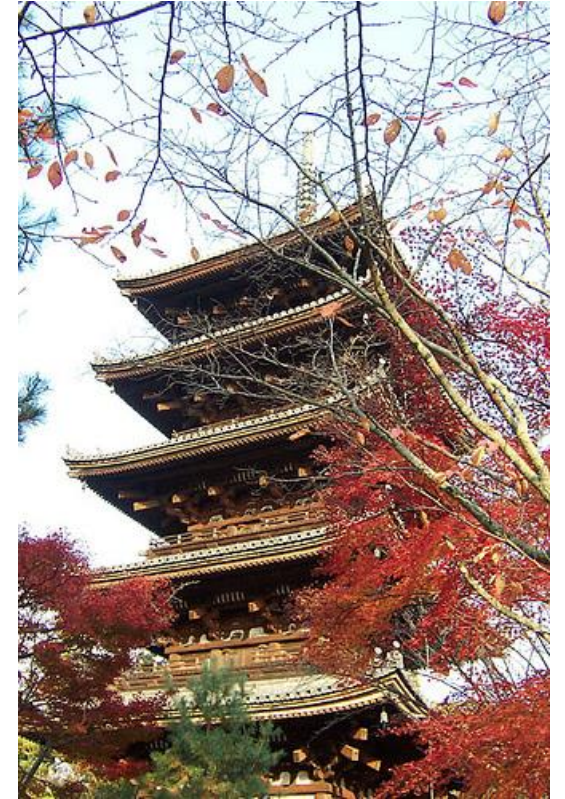


アジェンダセッティングワークショップ

2017年2月8日



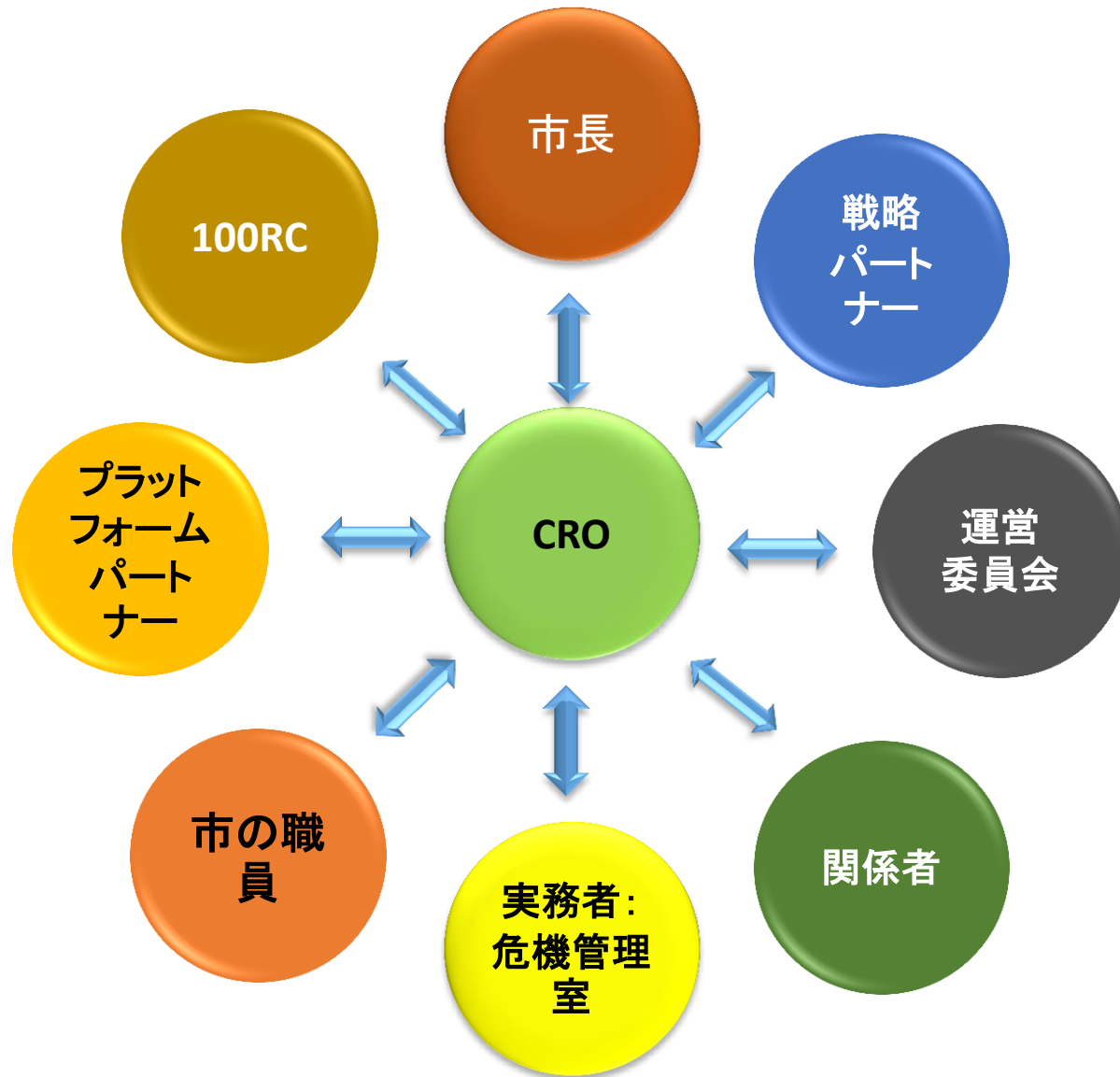
Dr. スパチャイ・タンティコム
バンコク市CRO

CROの役割

レジリエンスを向上させるための明確なビジョンを確立し、
レジリエンスに関する議論を推進し、
レジリエンス戦略の策定をけん引し、
100RCとの間で連絡・調整を行い、
100RCのネットワークやプラットフォームにおいて、その仲間として、生産的に貢献する。

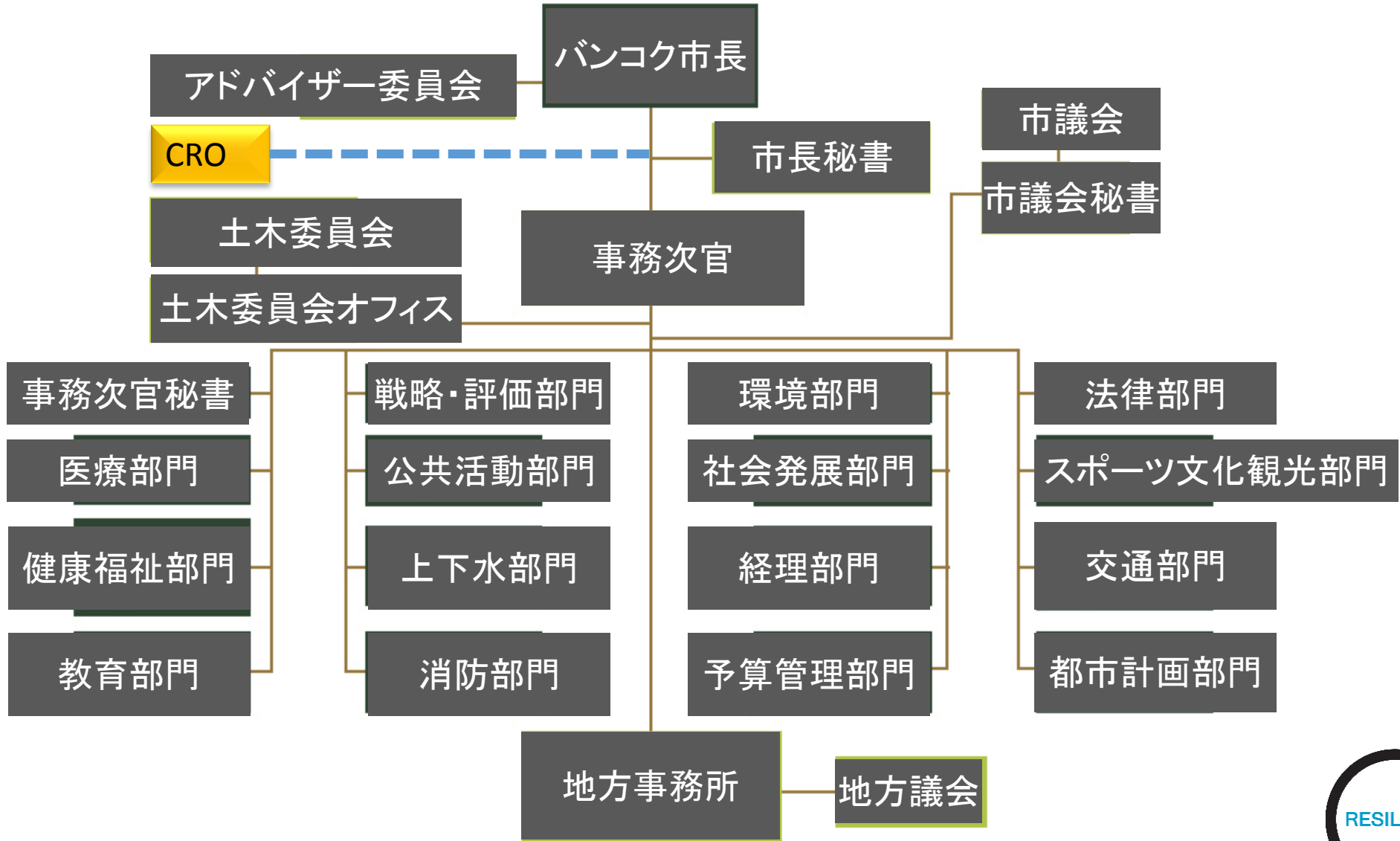
“市長は、CROの役割をサポートすることと、100RCの目標を達成することを約束し、市の幹部が確かに参加するように努める。

市は、CROの任命を公式に発表し、市長の権限の下、市の幹部待遇の役職としてCROの役割を確立する。”

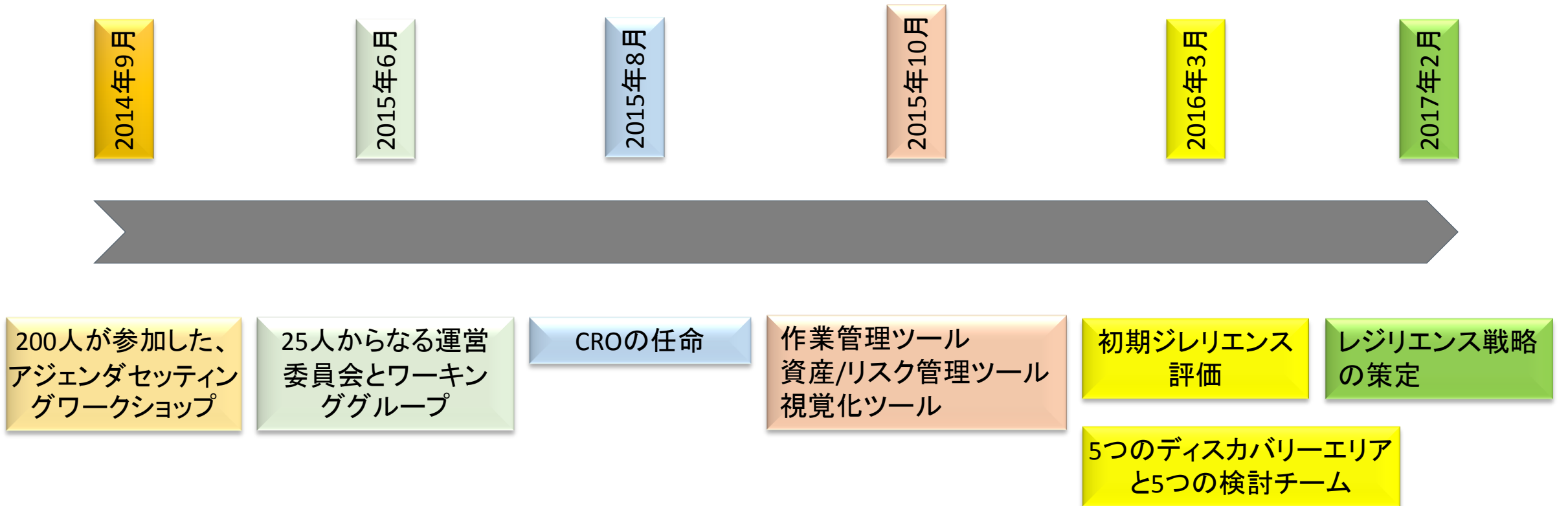


謙虚で、
賢く、
リーダーシップをもち、
我慢強く、
他者から喜んで学び、
都市の状況をよく理解し、
よき管理者であれ。

バンコク市の組織体制



バンコクにおけるレジリエンス戦略策定スケジュール





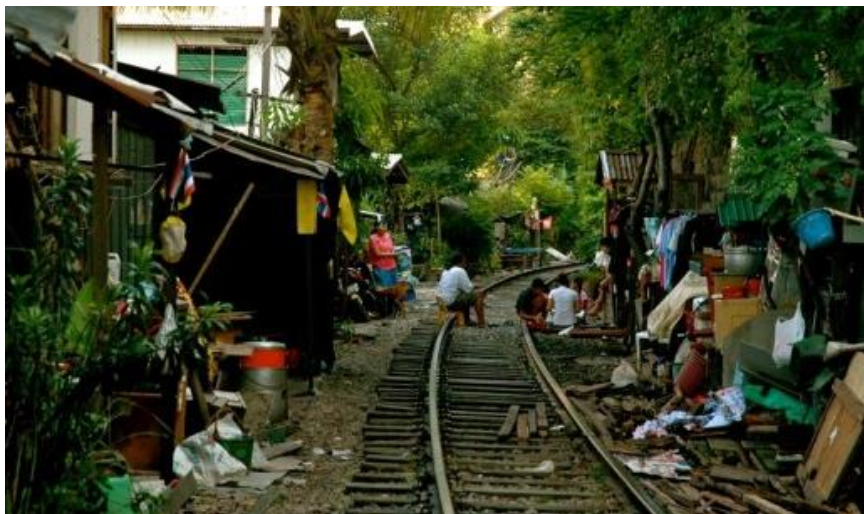
バンコク市

主要なショック

洪水
地震
暴動
経済危機
交通事故
火災

主要なストレス

失業
貧困と経済格差
交通量の増加
低い生産性
経済の衰退



バンコク市民の課題



初期レジリエンス評価

バンコクの主要ストレス



バンコクの主要ショック

失業

貧困と経済格差

交通量の増加

低い生産性

経済の衰退

洪水

地震

暴動

経済危機

交通事故

火災

ディスカバリーエリア1:
いかにして将来にわたって洪水から都市を守るのか？

ディスカバリーエリア2:
いかにして市民へのショックによる影響を低減し、回復力を高めるか？

ディスカバリーエリア3:
いかにして市内の移動手段を改善するか？

ディスカバリーエリア4:
いかにして経済を発展させ、経済格差を是正するか？

ディスカバリーエリア5:
いかにして市民の健康と福祉をサポートするか？

バンコクレジリエンス戦略

すべての人にとって、安全で、暮らしやすく、持続可能な都市

1: 生活水準の向上

2: リスク低減と順応性向上

3: 競争力の高い経済の推進

1
現在と将来にわたる、すべての市民の健康と福祉

2
安全で誰もが利用しやすく、便利な交通手段

3
環境にやさしい都市化

4
洪水に対するレジリエンス向上

5
意識、準備、適応に関する、公共と地域社会が先導する行動の増加


6
しっかりした組織能力と制度

7
都市または地域還元型経済の推進

8
観光、サービス、ホスピタリティ産業の拡充


RESILIENT BANGKOK			Safe, Liveable & Sustainable City for All	
STRATEGIC ACTION AREA	GOALS	INITIATIVES	PROJECTS	
INCREASING QUALITY OF LIFE	Health and wellbeing for all city residents now, and into the future	Promoting healthy living and lifestyles	Screening for diabetes and high blood pressure in people age over the age of 21	
		Epidemic prevention in urban communities	Event Based Surveillance for Pandemics	
		Preparing for quality aging	Study on improving work place and living environment for migrant workers in Bangkok	
	Safe, Accessible and Convenient Transportation Network	Integrated mass transport system	Support for elderly residents	Support for elderly residents
			Preparing the population aged 18-59 for old age	Preparing the population aged 18-59 for old age
		Improving traffic flow in the city	Accessibility and safety of transport options for senior citizens	Accessibility and safety of transport options for senior citizens
			Integrated Mass Transport System Master Plan	Integrated Mass Transport System Master Plan
			Expansion of Monorail Feeder and Light Rail System	Expansion of Monorail Feeder and Light Rail System
			Expansion of the Water Transport Network	Expansion of the Water Transport Network
	Reducing road related deaths through influencing driver behavior and new technologies	Integrated Information System for Traffic Management and Planning	Integrated Information System for Traffic Management and Planning	
		Reducing traffic congestion around schools – Pilot study of Samsen Road	Reducing traffic congestion around schools – Pilot study of Samsen Road	
		Study of integrated management of road network and development of a master plan	Study of integrated management of road network and development of a master plan	
	Environmentally Friendly Urbanization	Green growth: Supporting Environmentally Friendly Growth and Sustainable Waste Management	Feasibility Study for driving credit measures and taxes	Feasibility Study for driving credit measures and taxes
			Road safety audit	Road safety audit
		Encouraging low carbon transport	Driver behavior change campaign to reduce road accidents	Driver behavior change campaign to reduce road accidents
Memorandum of Understanding for the development of driverless vehicles			Memorandum of Understanding for the development of driverless vehicles	
Growing green space		Sustainable waste management	Sustainable waste management	
		Development of waste to energy	Development of waste to energy	
REDUCING RISK AND INCREASING ADAPTATION	Improving the City's Flood Resilience	Catchment management strategy and vision for the Chao Phraya Basin	Encouragement of Environmentally Friendly Transportation	
			Study on enhancing cycling pathways and facilities	
		Improvement of air quality management and communication	Improvement of air quality management and communication	
	Community water resource management programs	Urban flood defences	Build new recreation park	Build new recreation park
			Development of Riverside Promenade and Green Space along the Banks of the Chao Phraya	Development of Riverside Promenade and Green Space along the Banks of the Chao Phraya
		Study of lower Chao Phraya Basin and setting vision for water management in Bangkok	Development of a "Flood Hazard Map" for management and to communicate with the public on preparation for flood events	Development of a "Flood Hazard Map" for management and to communicate with the public on preparation for flood events
			Enhance effectiveness of weather and rainfall forecasts	Enhance effectiveness of weather and rainfall forecasts
			Community Water Resource Management	Community Water Resource Management
			Management of waste collection for canal communities	Management of waste collection for canal communities
	Increase Public and Community driven action on awareness, Preparedness and Adaptation	Community based adaptation and disaster preparedness and communication	Revision of design criteria for drainage	Revision of design criteria for drainage
			Pilot Study on developing urban water retention	Pilot Study on developing urban water retention
		Making better use of technology for public communication and disaster preparedness	Improvement of drainage system along main roads	
	Stronger Institutional Capacity and Regulation	Capacity building for disaster risk reduction in BMA	Development of drainage tunnels	Development of drainage tunnels
			Improvement of major canals	Improvement of major canals
		Resources and infrastructure for better preparedness and response	Study of the feasibility of developing combined utility tunnels	Study of the feasibility of developing combined utility tunnels
Feasibility assessment of Flood Resilience Index (FRI) – Sukhumvit Case study			Feasibility assessment of Flood Resilience Index (FRI) – Sukhumvit Case study	
Community Based Disaster Risk Management pilot			Community Based Disaster Risk Management pilot	
Community flood preparedness communication			Community flood preparedness communication	
Facilitating city and community-based economy	Supporting economic resilience in communities and encouraging the preservation of agriculture in the city	Youth education program for disaster safety	Youth education program for disaster safety	
		Disaster Learning Centre for Earthquake and fire hazards	Disaster Learning Centre for Earthquake and fire hazards	
	Establishment of a Bangkok center for economic development, trade and finance	Mobile Application for Survival during Disaster	Mobile Application for Survival during Disaster	
Expanding Tourism, Service Industry and Hospitality	Development of the cultural market in the city, including tourism operators and products	Disaster Prevention and Mitigation drills	Disaster Prevention and Mitigation drills	
		Search and rescue training program	Search and rescue training program	
	Resources and Infrastructure for Better Response and Preparedness	Resilience training for BMA social planners and analysts	Resilience training for BMA social planners and analysts	
		ASEAN city network and cooperation on disaster prevention and mitigation	ASEAN city network and cooperation on disaster prevention and mitigation	
		Inspection of BMA buildings for earthquake resilience	Inspection of BMA buildings for earthquake resilience	
		Equipment and devices for emergency response to building collapse	Equipment and devices for emergency response to building collapse	
DRIVING A STRONG AND COMPETITIVE ECONOMY	Supporting economic resilience in communities and encouraging the preservation of agriculture in the city	Bangkok Disaster Databank	Bangkok Disaster Databank	
		Disaster Training Centre	Disaster Training Centre	
	Establishment of a Bangkok center for economic development, trade and finance	Bangkok Command Center	Bangkok Command Center	
Expanding Tourism, Service Industry and Hospitality	Development of the cultural market in the city, including tourism operators and products	Enhancing Resilience of Vulnerable Communities in Bangkok by Integrated financial and social support	Enhancing Resilience of Vulnerable Communities in Bangkok by Integrated financial and social support	
		Promoting Development of Agriculture Sector for Sustainability	Promoting Development of Agriculture Sector for Sustainability	
	Resources and Infrastructure for Better Response and Preparedness	Establishment of Bangkok Economic Development Centre for Trade, Finance Develop Economy, Trade, Finance and Investment Analysts for BMA	Establishment of Bangkok Economic Development Centre for Trade, Finance Develop Economy, Trade, Finance and Investment Analysts for BMA	
DRIVING A STRONG AND COMPETITIVE ECONOMY	Development of the cultural market in the city, including tourism operators and products	Reducing Risk of Economic Shock	Reducing Risk of Economic Shock	
		Training Program for Tourism vendors and service providers	Training Program for Tourism vendors and service providers	
	Resources and Infrastructure for Better Response and Preparedness	Tourism sector Analysis and roadmap for tourism promotion	Tourism sector Analysis and roadmap for tourism promotion	
DRIVING A STRONG AND COMPETITIVE ECONOMY	Development of the cultural market in the city, including tourism operators and products	Model of Management and Development of Cultural Product for Tourism promotion (Pilot for Bangkok Noi District)	Model of Management and Development of Cultural Product for Tourism promotion (Pilot for Bangkok Noi District)	
		Enhancing Tourist Safety	Enhancing Tourist Safety	






いかにして将来にわたって洪水から都市を守るのか？

1




いかにして市民へのショックによる影響を低減し、回復力を高めるか？

2



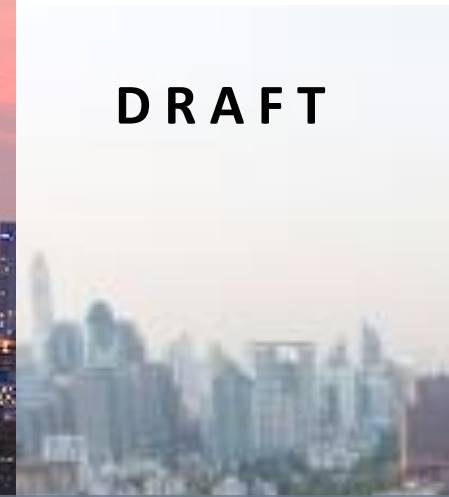
いかにして市内の移動手段を改善するか？

3



いかにして経済を発展させ、経済格差を是正するか？

4



いかにして市民の健康と福祉をサポートするか？

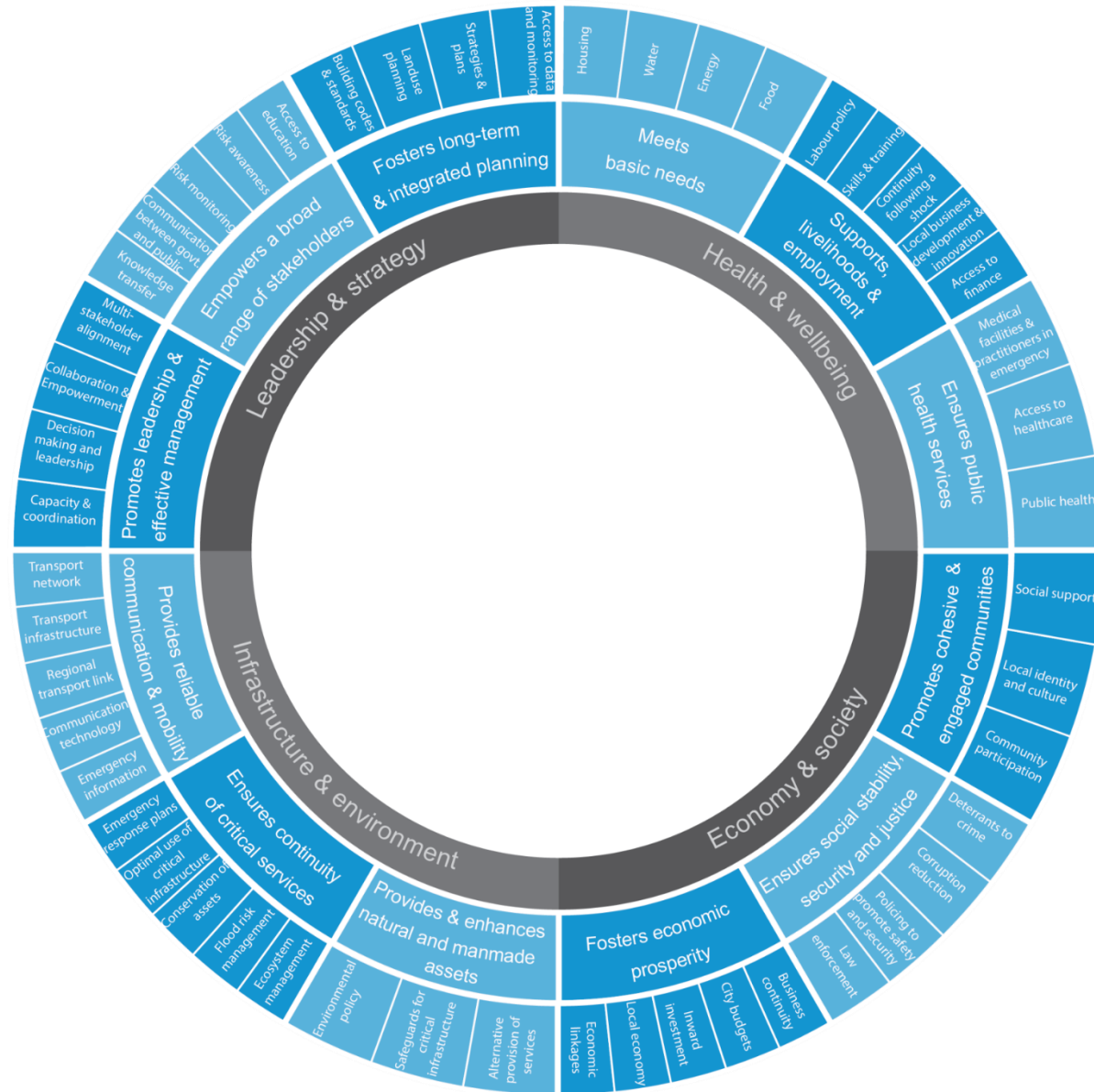
5

City Resilience Framework

4つの側面
 (健康/幸せ, インフラ/環境,
 経済/社会, リーダーシップ/戦略)

12の目標

50の要素



100 RESILIENT CITIES

Thank you

ありがとうございました

ขอบคุณครับ