



Tech Tour **KYOTO**

Technical tours for experiencing the strengths of Kyoto



京都市
CITY OF KYOTO

Kyoto City Information

Kyoto, the ancient capital of Japan, is situated in a basin surrounded by mountains on three sides. Through its long history of more than 1200 years, Kyoto has blended diverse cultures, and is called the spiritual home of Japanese people. In central Kyoto, streets and alleys run east-west and north-south, forming a grid pattern. While featuring a total of 14 UNESCO World Heritage Sites, including Nijo Castle, Kyoto is also home to more than 2,000 shrines and temples. Mountains and forests account for roughly three-quarters of the municipal area, which extends longitudinally. The remaining fourth of the land area comprises the urban district, centered on the Imperial Palace. Due to its basin-specific climate, Kyoto undergoes drastic temperature changes between day and night, and between the hottest and coldest periods of the year, so is renowned for the beauty of its clearly defined seasons. Kyoto is not only a historic city; it is also a tourist city, attracting many tourists from throughout Japan and around the world. Moreover, Kyoto is an academic research city, being home to universities and junior colleges, as well as an environmentally advanced city which can be a role model for decarbonation and recycle-oriented society. As indicated above, Kyoto is a city with a variety of attractive features.



Food

Kyoto traditional culinary culture has been refined over the centuries and includes Kyo-kaiseki multicourse Japanese meals, Shojin-ryori – the traditional food of Buddhist priests, sake, and Kyoto-style sweets. Besides washoku, or Japanese food, which was designated an intangible culture heritage by UNESCO in 2013, Italian, French and other world cuisines, and many reasonably priced eateries can easily be found as well.



Culture

Kyoto was the capital of Japan for over 1,000 years. Much of Japanese culture originated here, such as tea ceremony, flower arrangement, Noh theatre, traditional Mai dancing (geisha dancing) and much more. Even today, Kyoto remains the undisputed cultural capital of Japan.

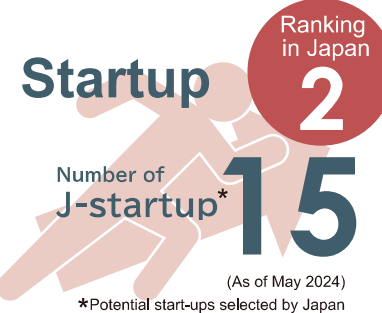
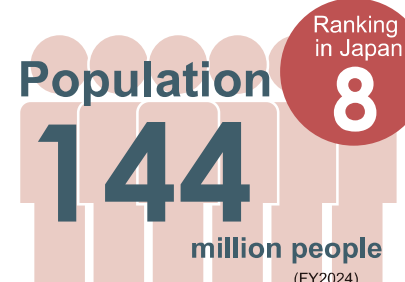
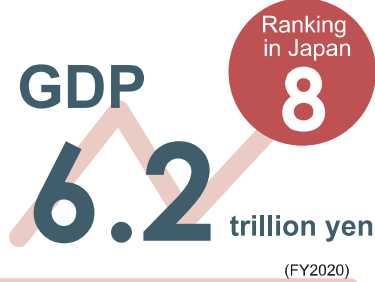


Traditional Products

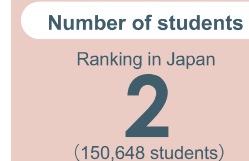
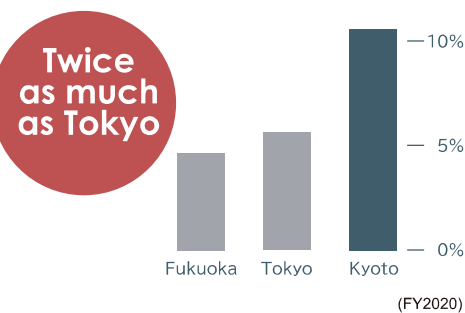
Kyoto is home to many kinds of traditional industries steeped in history and custom, including 17 nationally designated traditional crafts. These traditional industries are deeply connected to the lifestyles of the Kyoto people, and workshops and stores can be seen all over the city.



Kyoto City Business



Percentage of university students to Kyoto (city) residents



Tour Course

Based in the following five courses, we craft custom-designed tours that answer your individual business needs.

*Additionally, workshop tours and traditional cultural experiences can also be added as options.

1 Company Tour Courses

- Courses focusing mainly on touring the factories and showrooms of manufacturing companies in Kyoto.
- Promoting open innovation, searching for potential partner companies, and experiencing technology can be included in the course.

2 Startup Exchange Courses

- Introduces the technology and business plans of mainly deep tech startups in Kyoto City.
- Promoting open innovation, searching for potential partner companies, experiencing technology, searching for companies to invest in, etc. can be included in the course.

3 Advanced Research Courses

- Introduces the content of state-of-the-art research and development in Kyoto City.
- Promoting industry-academia linkages, viewing new technology, etc. can be included in the course.

4 Field-Specific Courses

- Courses specializing in a specific field.
(Choose from: life science, carbon neutrality, biotechnology, AI and IT, semiconductors, and traditional industries.)

5 Business Environment Tour Courses

- This is perfect if you want to place a hub in Kyoto.
- Tour Kyoto City business environments, including labs, incubation facilities, and coworking environments.

Innovation and Technology

Kyoto houses many prominent global technology companies and universities like Kyoto university that encourages cutting-edge research and development. You can foster the innovation by collaboration with these companies and universities.

Environment

This rich cultural tapestry, relaxed pace of life and beautiful natural landscapes creates a vibrant and inspiring environment and enhances promoting creativity.

Start-up

Kyoto is selected as one of the global startup cities by Japanese government. Under the prosperous startup ecosystem, Kyoto have been producing attractive startups mainly in the field of deep tech.

Strategic Location

Kyoto is situated in the Kansai region, which includes Osaka and Kobe. This location provides access to a combined population of over 20 million people and is about two-hour bullet train ride from Tokyo. Furthermore, Kyoto is about 80-minutes limited express train ride from Kansai International Airport and enable global companies to connect with Asian markets efficiently.

**Innovation City
KYOTO**

Consultation process

Who these tours are for / Our general reception options

For companies, groups, government officials, etc. from outside of Japan who are considering business exchanges and network building with companies, universities, etc. in Kyoto City, we not only plan and propose tours that include tour destinations and exchange menus designed to fulfill participant needs, we also provide services including arrangements with related parties.

* We facilitate a broad range of goals, spanning from general interests such as the desire to know about Kyoto companies and state-of-the-art technology to more concrete plans like the desire to search for joint-research partners and consider intaking products for specific fields

* Tours are generally for 10-20 participants per group, and last anywhere from a half to full day.

* We do not handle inquiries from provide arrangements for meals or sightseeing facilities, overnight lodging, etc.

How to Contact Us

Please include the following information when applying.

- Possible dates, number of people, affiliation of participants, and desired tour content.
- Your transportation method up to Kyoto City and if you need interpreting.

Application flow

1

Apply to the
Kyoto Technical
Tour office.

2

The office will send
you a tour content
proposal.

3

You check the
proposed content
(and make alterations
if necessary).

4

The tour content
is registered.

Contact

Tech Tour Kyoto Office

E-mail: tec-tour-kyoto@hellokcb.or.jp / TEL: +81-(0)75-708-3239

Open: 9:00AM-5:00PM(Closed: Sat, Sun, National holidays)

Languages Supported: Japanese, English

Consignee: Kyoto Convention & Visitors Bureau

Foreign PR website for small and
medium-sized companies in Kyoto

Kyoto OnlineTech Pavilion

We introduce approximately 200 small to medium-sized Kyoto tech companies and startups with impressive technology. Definitely have a look if you want to know more about the Kyoto business environment.



Kyoto Online Tech Pavilion