

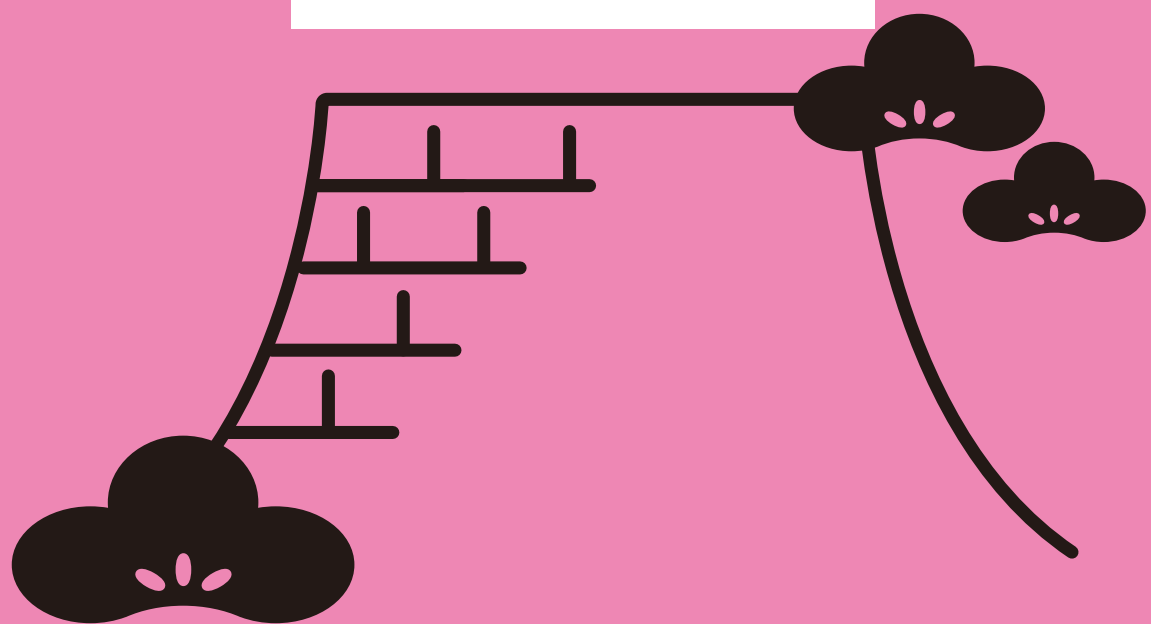


Let's enjoy!

くるり  
二条城

# Nijo Castle Area Map

二条城周辺散策MAP



二条城周辺地域活性化協議会  
**Leaf**

京都三条会商店街  
Kyoto Sanjo Shopping Street  
☎075-811-4472  
http://sanjakai.kyoto.jp/



京都市立芸術大学ギャラリー  
@KCUA  
Kyoto City University of Arts  
Art Gallery @KCUA  
☎075-253-1509  
http://gallery.kcuu.ac.jp/



BiVi二条  
Bivi Nijo  
☎075-823-1600  
https://www.e-bivi.com/niyo/



ANAクラウンプラザホテル京都  
ANA Crowne Plaza Kyoto  
☎075-231-1155  
http://www.anacpkyoto.com/



元離宮二条城事務所  
Nijo Castle  
☎075-841-0096  
http://nijo-jcastle.city.kyoto.  
lg.jp/?lang=en



株式会社  
リーフパブリケーションズ  
Leaf Publications Co.,Ltd.  
☎075-255-7263  
https://www.leafkyoto.net/



# BiVi NIJO

BiVi二条  
Bivi Nijo  
☎075-823-1600 京都市中京区西ノ京桐尾町107  
107, Togano-cho, Nakagyo-ku, Kyoto https://www.e-bivi.com/niyo/

## ACCESS

JR・Subway Tozai Line  
[Nijo Station]  
Short walk  
from the west exit

Kyoto City Bus  
[Nijo Sta.]  
[Nijo Sta.(Nishiguchi)]  
Short walk  
from the bus stop

**Legend**

- Major evacuation area
- Evacuation shelter
- Evacuation shelter equipped for the elderly and handicapped
- Hotel/lodging facility
- Culture spot
- Gourmet spot
- Shopping spot
- Traditional Shopping
- Enjoy Kyoto Sanjo Shopping Street

The information on this map is current as of March 31, 2020. Please note that the data on the prices, business hours, etc., may change depending on the season or with the passage of time. Unless otherwise indicated specifically, a 10% consumption tax is included in all prices shown. Days off may change during the Obon and New Year's holiday season. Please inquire at the shops listed.



Nijo Castle (Column.1)  
↓  
Shinsenen (Column.2)  
↓  
Nijo-Jinya (Column.3)  
↓  
Site of Higashimachi-Bugyosyo  
↓  
Site of Nishimachi-Bugyosyo  
↓  
Wakasaobama Hanteiato (Column.4)  
↓  
Takenobuinari Shrine (Column.5)  
↓  
Matatabisha (Column.6)

**Featured course  
to feel  
the history**

**CULTURE SPOT**  
**文化体験**  
Experience the culture of Kyoto for lasting memories of your travels. The many workshops available, where you can hear lectures from traditional craftsmen, will make your trip even more special. And don't forget to stop by all the spots said to bestow favor on visitors.

Try Yuzen dyeing  
at a Kyoto Machiya-style studio



4 丸益西村屋  
MARUMASU NISHIMURAYA  
☎075-211-3273 京都市中京区八川通御池下ル巻屋町446  
446, Tsujobo-cho, Nakagyo-ku, Kyoto ☎075 9am-7pm(Last entry: 5pm)  
☎075 11:30am-6pm(Fri., until 11pm, Sat. and Sun.: from 11am)  
☎075 10am-5pm ☎075 Irregular holidays https://www.marumasu-nishimuraya.co.jp/

Try Maki-e, a traditional craft  
from Kyoto

1 蒔絵 梅仙  
MAKI-E BAISEN  
☎075-221-6062 京都市中京区奥川通堀川東ノ上丸高島川町557-1  
557-1, Nishiohigashicho, Nakagyo-ku, Kyoto ☎075 10am-5pm ☎075 Irregular holidays

A one-of-a-kind vividly colored memento  
of your travels



5 京都絞り工芸館  
KYOTO SHIBORI MUSEUM  
☎075-221-4252 京都市中京区油小路通御池南入ル式所町127  
127, Shikimachi-cho, Nakagyo-ku, Kyoto ☎075 9am-5pm  
☎075 Irregular holidays https://www.shibori-museum.jp/

Making original  
Japanese Washi paper by hand

2 和詩倶楽部  
WASHI CLUB  
☎075-213-1477 京都市中京区油小路通二条上ル東町593 SガビルF  
593-1, Suga Bldg. 1F, 593, Kusuriji-cho, Nakagyo-ku, Kyoto ☎075 10am-6pm  
☎075 Open every day(Kamisuki: Mon.) http://www.washiclub.jp/

Experience the way of tea — Beginners welcome



6 らん布袋  
RAN HOTEL  
京都市上京区上瓦町 64, Kamikawara-cho, Nakagyo-ku, Kyoto  
☎075-1130am-6pm(Fri., until 11pm, Sat. and Sun.: from 11am)  
☎075 Thu. https://ranhotel.com/

Gifts of sachets made of splendid  
Nishijin weave

3 おい袋 ゆりの  
NIOIBUKURO YURINO  
☎075-213-5736 京都市中京区西院通堀川下ル三好番町560-3  
560-3, Sanbushinshon-cho, Nakagyo-ku, Kyoto ☎075 10am-6pm ☎075 Irregular holidays

The only workshop to carry on the tradition  
of Kyoto spinning tops



7 雀休  
JAKKYU  
☎075-811-2281 京都市中京区神楽坂町11  
11, Shinsen-cho, Nakagyo-ku, Kyoto ☎075 11am-6pm  
☎075 Sun. and Mon. https://www.shisei.nc.jp/jakkyu/

Nijo Castle saw both the beginning  
and the end of the Tokugawa shogunate

Nijo Castle plays a significant role in the history of the Tokugawa shogunate. The occasion of the 2nd Shogun Tokugawa Hidetada inviting to the castle Emperor Gomizunoo (1626), to whom he married off his daughter, signified to the world the beginning of the supremacy of the Tokugawa shogunate. It was here that the 15th Shogun Tokugawa Yoshinobu held the symbolic ceremony returning the government to the Imperial court. A great many splendid decorative works, such as Kano school partition paintings, convey the mood of the times.

二条城 NIJO CASTLE  
☎075-841-0096 京都市中京区二条通堀川西ノ上二条城町541  
541, Nijojo-cho, Nakagyo-ku, Kyoto ☎075 8:45am-4pm(Closing Time: 5pm) ☎075 Open every day  
Adults ¥1,030, Junior High / Senior High School students ¥350, Primary School students ¥200 http://nijo-jcastle.city.kyoto.lg.jp/

Enjoy even more!  
KURURI Column.1



Sugar craft pastillage  
"Nijo Castle" diorama  
It is recreated the castle tower of the main palace in Nijojo Castle, which was burned by lightning in 1730, and the south bridge between the south gate and Oshikoji street at the time of the Emperor Taisho's ceremony. It became a dreamlike Nijojo Castle only here.

ANA Crowne Plaza Kyoto is a relaxing hotel  
next to the World Cultural Heritage  
"Nijo-jo Castle" in the central ancient city.

- Café Restaurant "COZY"
- Japanese Restaurant "UNKAI"
- Tempura "KAMON"
- Tea & Cocktail "KOTO LOUNGE"
- Bar "CASTLE GATE"
- Szechwan Restaurant "SHOKKO"
- Teppanyaki "NIJO"
- French Restaurant "ROSE ROOM"

ANAクラウンプラザホテル京都 ANA Crowne Plaza Kyoto  
☎81-75-2311155 〒601-0055 京都市中京区堀川通一三条城  
Nijojo mae, Horikawa dori, Nakagyo-ku, Kyoto, 601-0055, Japan