

For a more comfortable Kyoto trip

#2

Some examples of facilities offering discounts

Nijo-jo Castle
100 yen off admission
Eikando Temple, Kodaiji Temple
100 yen off admission
TOEI KYOTO STUDIO PARK
200 yen off admission

Take advantage of the Subway & Bus 1-Day Pass!

Unlimited rides on all city subway lines and city buses!

You can also ride on the Kyoto Bus, Keihan Bus and West Japan JR Bus!

(Some routes are not included.)

Make the most of your sightseeing by using the subway and buses efficiently. And with a Subway & Bus 1-Day Pass, you'll also get discounts and deals at around 60 locations in Kyoto.

Sightseeing Limited Express Bus, too!

More information here



Subway & Bus 1-Day Pass



Adults 1,100 yen
Children 550 yen

Where to buy

- City bus and subway information centers and commuter pass sales offices
- Subway station ticket counters
- Onboard city buses

*Limited availability on buses, so be sure to buy your pass at a separate ticketing location beforehand.

Sightseeing Limited Express Bus

Operates on Saturdays, Sundays, and holidays



Only stops at bus stops near famous tourist destinations, so it's fast!

Travel times from Kyoto Station (boarding area D1):

Kiyomizu-dera Temple
(Nearest bus stop)
Direct 10-minute ride
5 minutes faster

Gion
13-minute ride
8 minutes faster

Ginkaku-ji Temple
(Nearest bus stop)
24-minute ride
20 minutes faster

Unlimited rides with the Subway & Bus 1-Day Pass!

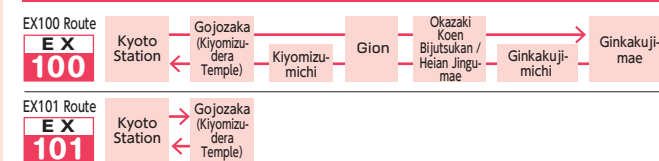
Other payment methods

- Cash, Travel IC Cards (E.g. Suica, ICOCA and others)
- Fare per ride: Adults 500 yen Children 250 yen

More information here



Route



For a more comfortable Kyoto trip

#3

Leave your large luggage with us and enjoy hands-free sightseeing!

Traveling with bulky luggage can be tough and inconvenient. Moreover, it may cause inconvenience to other people around you. At Kyoto Station, you can find luggage storage solutions and even use delivery services for hands-free sightseeing!



Please refrain from bringing large baggage onto city buses

Bringing large baggage onto the buses makes the buses very crowded.

Leave your baggage at the counter



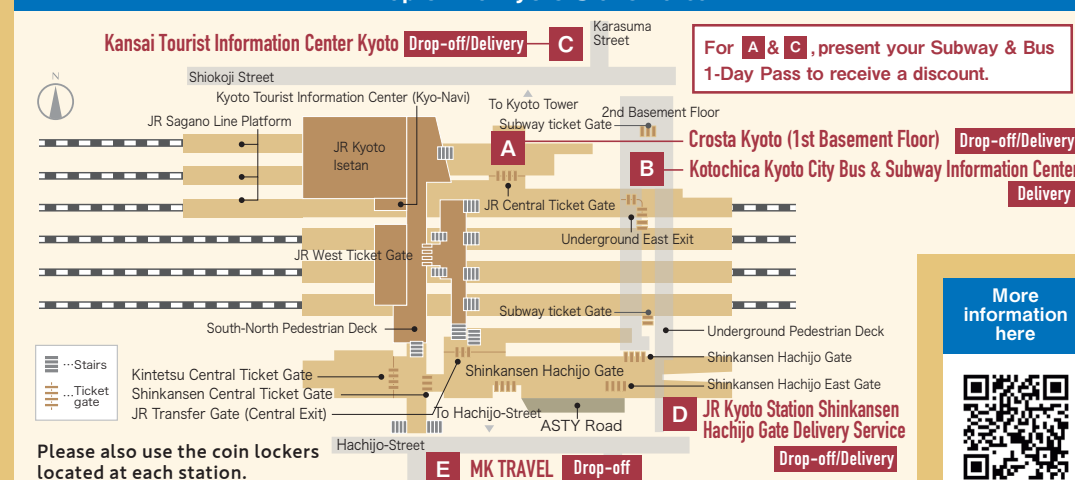
Have your baggage delivered



Leave your luggage in a coin locker



Map of the Kyoto Station area



More information here



For a more comfortable Kyoto trip

- #1 Use both trains & buses to get around!
- #2 Get the convenient, money-saving Subway & Bus 1-Day Pass!
- #3 Leave your large luggage with us & enjoy hands-free sightseeing!

Kyoto City Transportation Bureau, issued in November 2024

SDGs未来都市 京都
Kyoto City Bus & Subway
We support the Sustainable Development Goals



For a more
comfortable
Kyoto trip

#1

Use a combination of trains and buses to get to Kyoto's sightseeing spots!

The world-renowned destination of Kyoto is bustling with travelers. We recommend combining trains, known for their **punctuality** and **traffic-free travel**, with buses for getting around.



When you only travel by bus...

OMG!



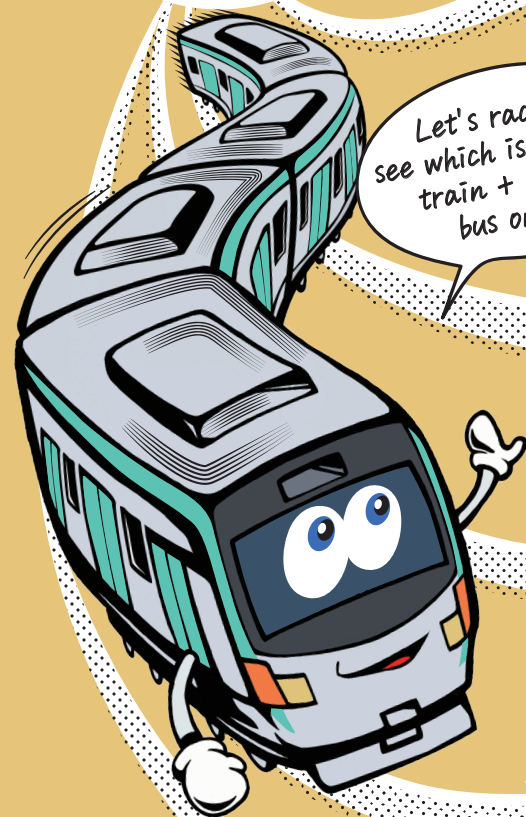
The bus is
too full to board!



It's too crowded
to sit!



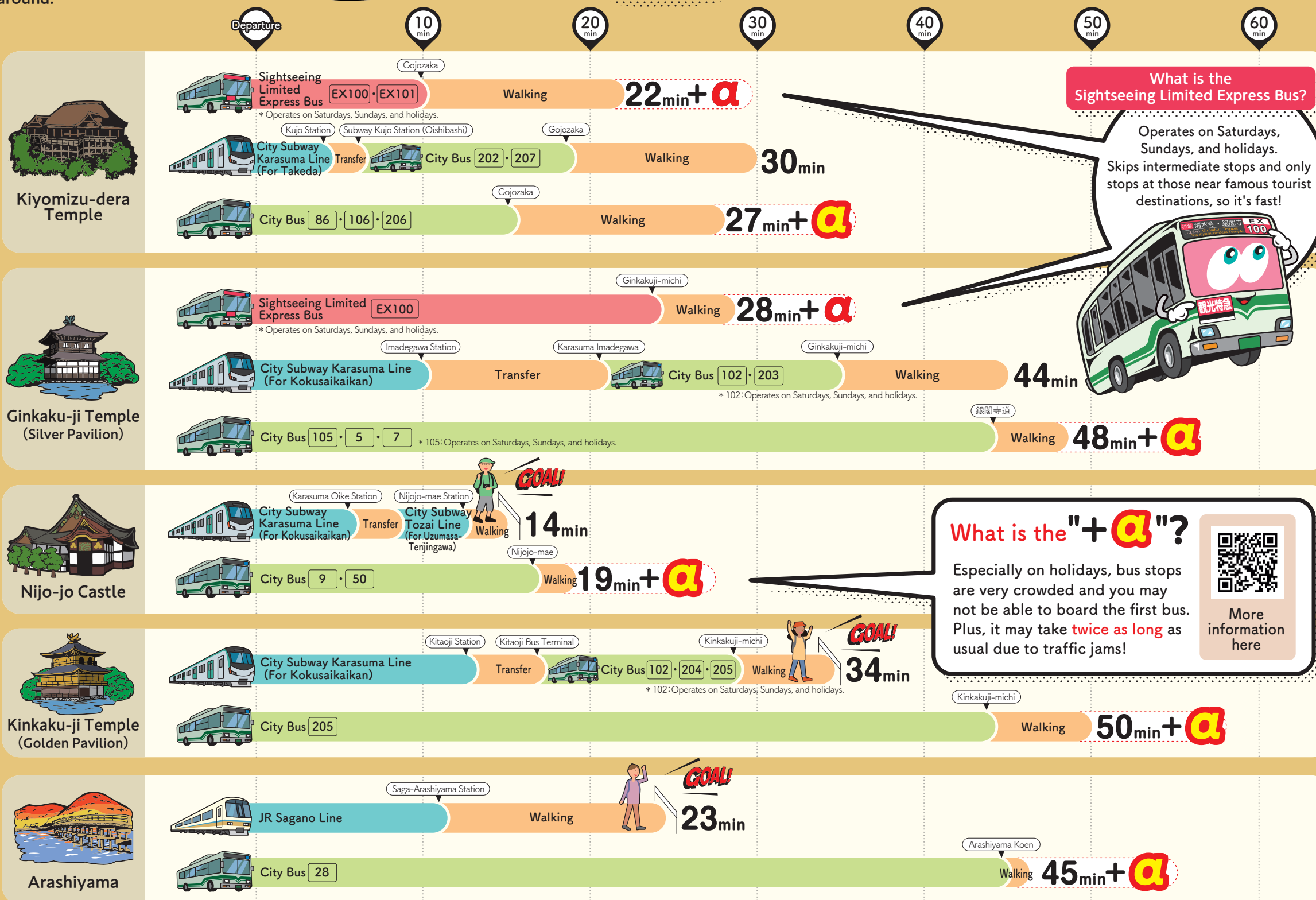
Late because of traffic jams!



Let's race to
see which is faster,
train + bus or
bus only!

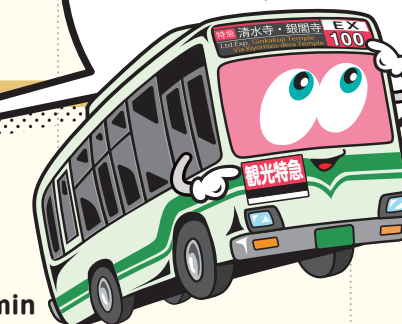


Using trains
and buses together
is faster!



What is the
Sightseeing Limited Express Bus?

Operates on Saturdays,
Sundays, and holidays.
Skips intermediate stops and only
stops at those near famous tourist
destinations, so it's fast!



What is the " α "?

Especially on holidays, bus stops
are very crowded and you may
not be able to board the first bus.
Plus, it may take **twice as long** as
usual due to traffic jams!



More
information
here

*The time required when departing from Kyoto Station at 10 AM on weekends or holidays (Source: Yahoo! Transit Information)