

Large-sized items

① Request Kyoto City Large Trash Collection Center

☎ **0120-100-530** (Toll free)

Request from mobile phone

☎ **0570-000-247** (Call charges apply)

Working hours: Every day (Open on Saturdays, Sundays and public holidays)
8:30 AM to 4:30 PM
(Excluding year end and new year holidays)

※Calls cannot be made from IP phones and PHS to the above numbers.

Contact the Center for Clean Life Environment
(☎075-691-9376)

Confirm the collection day, fee for collection, reference number, and pick-up point.



Purchasing disposal fee (sticker) for large-sized items

② Request private contractors

Check with the caretaker, etc. of the apartment where you reside.

[Contractor name]

③ Take to the Incineration Plant

South Incineration Plant ☎ **075-611-5362**

29, Yokooji Hattanda, Fushimi-ku, Kyoto city

North East Incineration Plant ☎ **075-741-1003**

1339 Ichihara-cho, Shizuichi, Sakyo-ku, Kyoto city

Collection of dead animals such as dogs and cats

① Apply for collection at the Kyoto City Dead Animal Collection Center

☎ **0120-100-921**

(Toll free)

Request from mobile phone

☎ **0570-000-614**

(Call charges apply)

※From IP phones and PHS, please contact the Center for Clean Life Environment given on the right.

Working hours:

Monday to Friday: 8:30 AM - 4:30 PM
(including national holidays)

Saturdays and Sundays: 8:30 AM to 11:30 AM
(Excluding year end and new year holidays)

② When carrying in to the Center for Clean Life Environment

Payment notice will be sent from the Center for Clean Life Environment later.

☎ **075-691-9376** (Call charges apply)

Timing: Monday - Friday (including national holidays)
8:00 AM to 4:45 PM (excluding year end and new year holidays)

Kindly cooperate to promote recycling!

Collection of recyclable resources at various collection facilities

Recyclable resources such as, "Newspapers and cardboard", "Miscellaneous paper waste", "Cartons", "Waste cooking oil used for tempura", "Used clothing", "Dry batteries (including button cells, and rechargeable batteries)", "Fluorescent tubes", "Mercury thermometers and mercury sphygmomanometers", "Small appliances", and "Cutlery", etc. are collected at various collection facilities.

※Please note that items that can be collected by each collection facility is different.

Collection facilities for garbage are Counter for Ecological Activities and City Beautification Sections at ward offices and branch offices, Kamigyo Recycle Station and cooperating stores in Kyoto city. For details, inquire at the Counter for Ecological Activities mentioned on the right or visit the website given below.

京都市 資源物回収マップ

Kyoto city recyclable resources collection map

検索

Search

Community collection system

In Kyoto city, a system to offer grant for voluntary collection of recyclable resources by local groups has been established.

- Items collected
- Waste paper** (Newspapers, magazines, books, cardboard, miscellaneous paper waste, and cartons)
 - Used clothing** (old clothes, and used fabric, etc.)
 - Cans** (aluminum and steel cans)
 - Bottles** (limited to disposable single use bottles)
 - Others** (PET bottles, and small metal items, etc.)

For details, inquire at the Counter for Ecological Activities at ward offices and branch offices (refer to the right).

Contact us

Kita Counter for Ecological Activities	☎ (075) 366-0155
Kamigyo Counter for Ecological Activities	☎ (075) 366-0776
Sakyo Counter for Ecological Activities	☎ (075) 366-0821
Nakagyo Counter for Ecological Activities	☎ (075) 366-0180
Higashiyama Counter for Ecological Activities	☎ (075) 366-0182
Yamashina Counter for Ecological Activities	☎ (075) 366-0184
Shimogyo Counter for Ecological Activities	☎ (075) 366-0186
Minami Counter for Ecological Activities	☎ (075) 366-0188
Ukyo Counter for Ecological Activities	☎ (075) 366-0190
Nishikyo Counter for Ecological Activities	☎ (075) 366-0192
Rakusai Counter for Ecological Activities	☎ (075) 366-0194
Fushimi Counter for Ecological Activities	☎ (075) 366-0196
Fukakusa Counter for Ecological Activities	☎ (075) 366-0198
Daigo Counter for Ecological Activities	☎ (075) 366-0311

North Ward Beautification Office	☎ (075) 724-8881
East Ward Beautification Office	☎ (075) 722-4345
Yamashina Ward Beautification Office	☎ (075) 573-2457
South Ward Beautification Office	☎ (075) 681-0456
West Ward Beautification Office	☎ (075) 882-5787
Nishikyo Ward Beautification Office	☎ (075) 391-5983
Fushimi Ward Beautification Office	☎ (075) 601-7161

City Beautification Section ☎ (075) 213-4960

If this printing matter is not required any more, please dispose as "Miscellaneous paper waste"



Kyoto city printed matter No. 275014, issued in September 2017

— Notice from Kyoto City —

To residents of apartments, etc. where private contractors collect garbage

There are many apartments in the city where garbage is collected by private contractors because garbage must be collected daily or at night. Make sure to check the rules of garbage collection with the caretaker of the apartment where you reside, as the rules for collection are different from those of Kyoto city.

How to dispose burnable garbage and recyclable resources

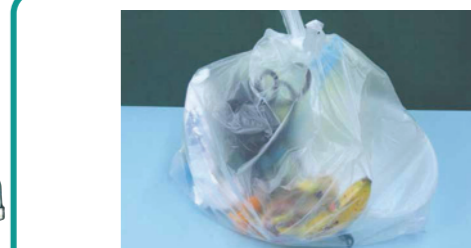
Burnable garbage

Raw garbage, plastics other than "Containers" and "Wrapping", glass, ceramics, leather, and fiber, etc.

When collected by private contractors



When collected by private contractors



Dispose in **clear** or **white transparent bags** (available in the market).

Method A

Recyclable resources

Cans, bottles, PET bottles, plastic "Containers" and "Wrapping", small metal items, and spray cans etc.

Collected by Kyoto city



Caution Recyclable resources may be collected by private contractors or by Kyoto city.

Place at recyclable resources pick-up points in Kyoto city.

Put cans, bottles, PET bottles, plastic "Containers" and "Wrapping" in the respective paid bags (for recyclable resources) designated by Kyoto city.

Put small metal items and spray cans in a clear bag (available in the market) and write "Metal" on the bag or write "Metal" on a paper and stick on the bag.

In case of Method A mentioned above

※Contact the caretaker of the apartment where you reside, as rules vary for every apartment.

Recyclable resources (paper)

Newspapers, cardboard, miscellaneous paper waste (flyers and catalog, cartons, paper bags, wrapping paper, envelopes, and magazines, etc.)

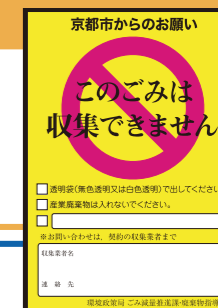
In case of Method B mentioned above

- Put out for collection by the local community. (To start a new community collection service, consult the ward beautification office or eco-town station. A subsidy system has been established.)
- Handing out to a waste paper recycling collector (Collected by waste paper recycling collectors who go around the city with a sticker stating "We also collect miscellaneous paper waste".)
- Take to a collection facility
- If disposal of miscellaneous paper waste using any of the 1 to 3 is difficult, dispose on the day when small metal items and spray cans are collected (once a month). ※ Please dispose in a paper bag. If a paper bag is not available, then tie with a string or dispose in a transparent bag.

Warning

Information on warning sticker

If rules are not followed while disposing garbage, such as garbage is not disposed in a transparent bag, insufficient segregation, large-sized items are mixed in the garbage, then the garbage collector will stick a **warning sticker** and leave the garbage behind at the garbage collection point.

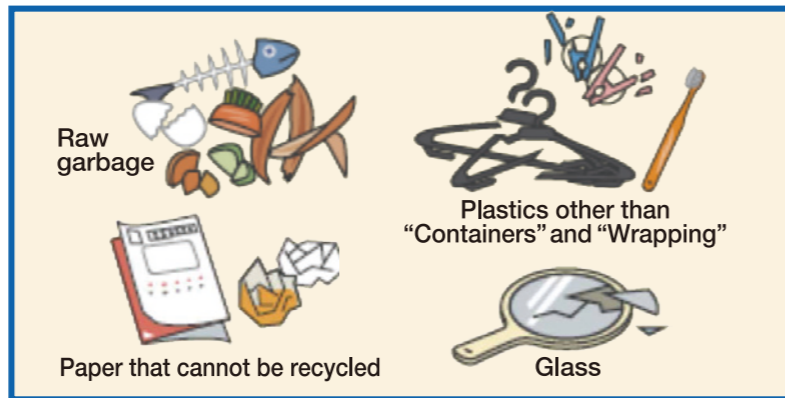


Burnable garbage

Raw garbage, plastics other than "Containers" and "Wrapping", non-recyclable paper, and glass, etc.

Rules for disposal

- ① Completely drain excess water from raw garbage.
- ② Wrap glass, etc. with thick paper!
Hazardous materials such as broken glass, etc. can be unsafe when garbage is collected. Wrap such materials with thick paper and place at the center of the garbage bag.
- ③ Use water to soak items that may cause fire!
Soak matches and cigarette butts etc. in water before disposal. Use gas of lighters completely and soak in water before disposal.



Please dispose these items along with burnable garbage

Caution Such items are classified as "Burnable garbage". Though they are plastics, they are not classified as "Containers" and "Wrapping"!



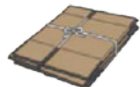
Recyclable resources ■ All types of paper that can be recycled after October, 2015

Always sort newspapers, cardboard, cartons, and miscellaneous paper waste!!

Newspaper



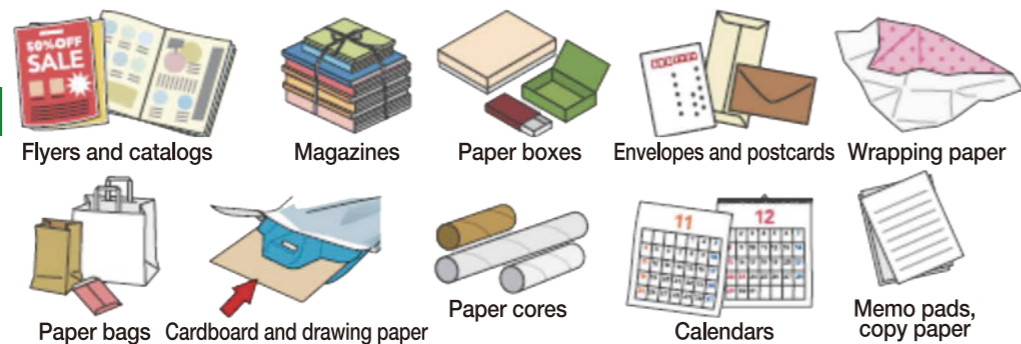
Cardboard



Cartons

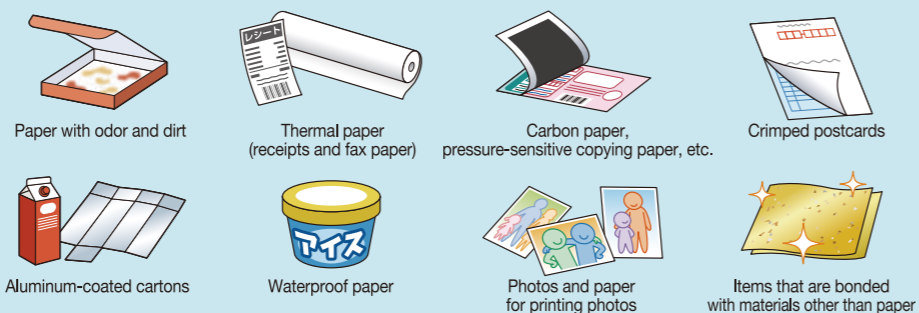


Miscellaneous paper waste



Paper that cannot be recycled (Items to be avoided)

Since these items have a large negative impact on recycling, please do not dispose such items along with recyclable paper.



Recyclable resources

Cans, bottles, PET bottles, plastic "Containers" and "Wrapping", small metal items and spray cans **Should be sorted without fail !!**

Cans, bottles, and PET bottles

Cans and bottles for food and beverages, PET bottles for beverages, alcoholic beverages, and soy sauce, etc.

Rules for disposal

- ① Remove caps and labels of PET bottles before disposal!
Dispose removed caps and labels along with plastic "Containers" and "Wrapping".
- ② Empty the cans or bottles and rinse inside!
- ③ Please do not put foreign matter such as cigarette butts or nails inside!
- ④ Remove the caps from bottles and dispose before sorting!
Please dispose metal caps along with burnable trash and plastic caps along with plastic "Containers" and "Wrapping".



Plastic "Containers" and "Wrapping"

Trays, bottles, bags, cups, caps, and cushioning materials, etc.

Rules for disposal

- ① Please wipe or rinse items that are stained before disposal.
- ② If dirt is stubborn and cannot be removed, please dispose along with burnable garbage.
- ③ Please do not put any foreign matter.

"Containers" and "Wrapping" items



Use this mark for reference!

Small metal items and spray cans

Items made of metals such as pots, kettles with maximum length roughly less than 30 cm

Rules for disposal

- ① Completely use the contents of spray cans, and cassette gas cylinders, and dispose without **making any holes**.
- ② Remove oily waste before disposal.

