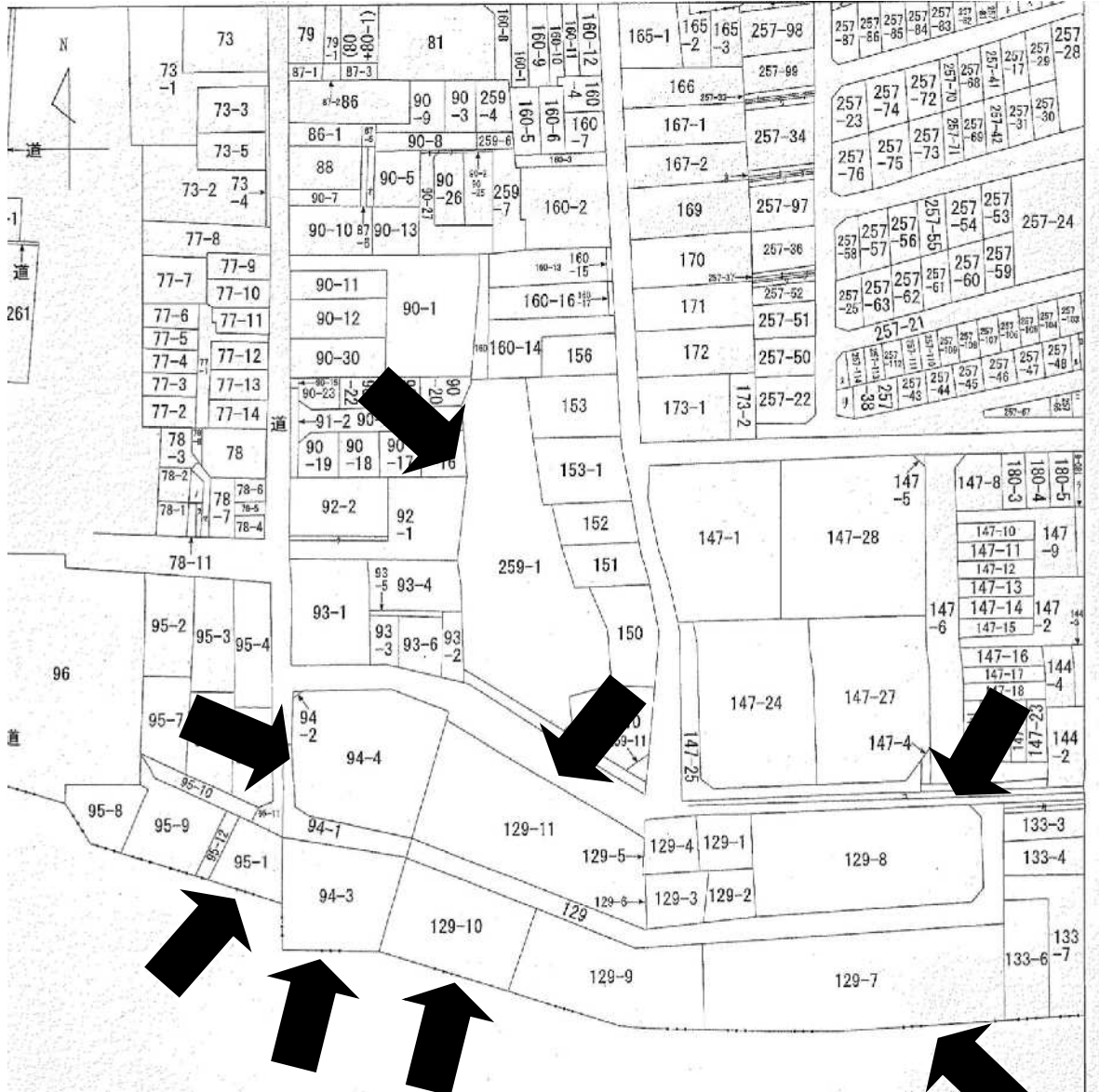
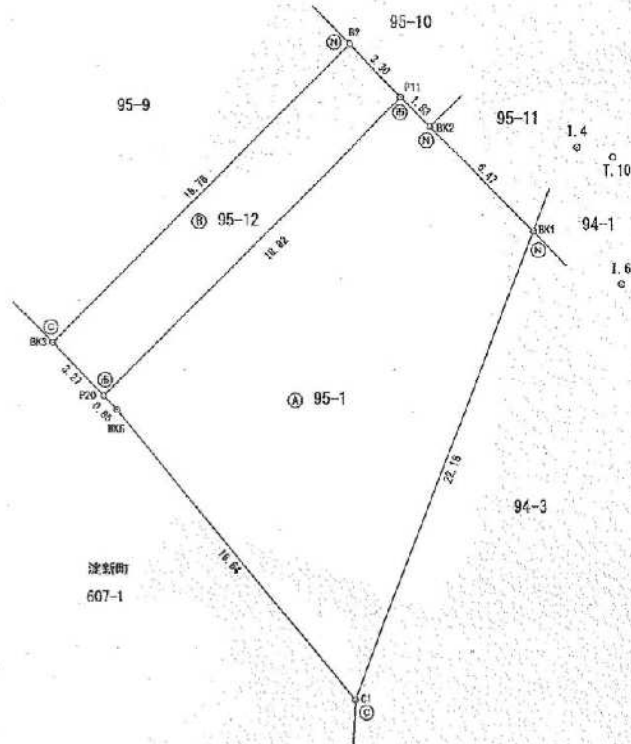


公図 (4号物件)



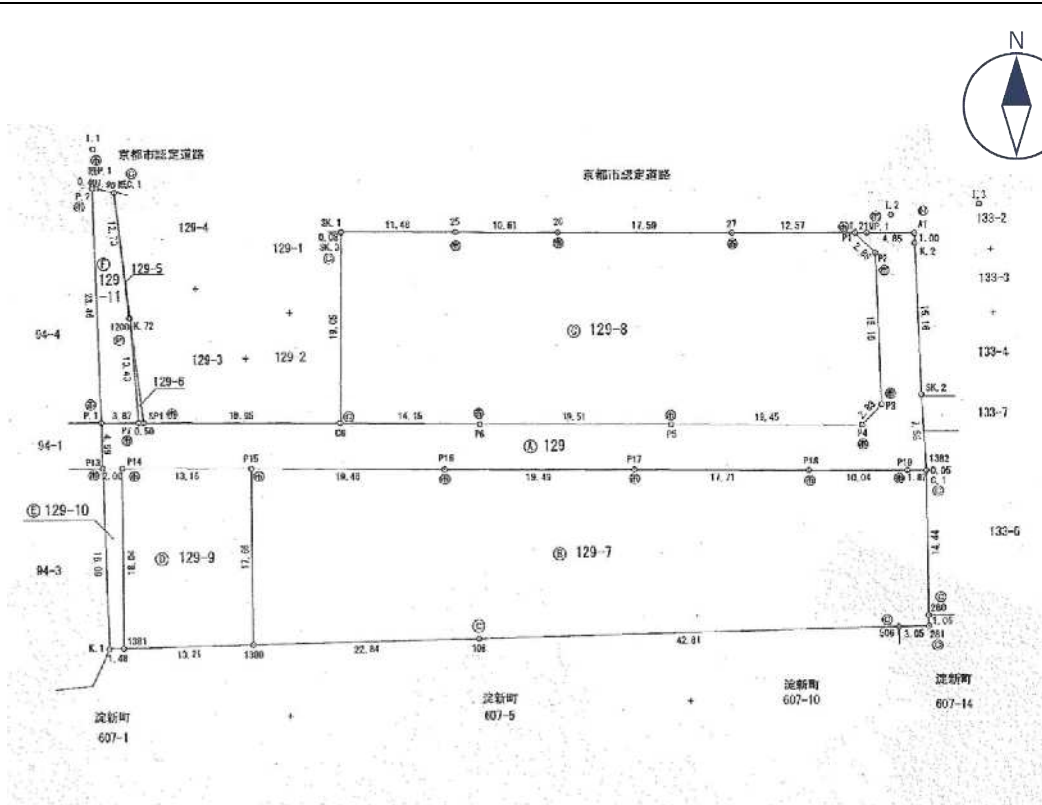
平面図 (4号物件)



求積表

地番	㊤ 95-1			
NO	X_n	Y_n	$Y_{n+1}-Y_{n-1}$	$X_n \cdot (Y_{n+1}-Y_{n-1})$
BK1	-121784.777	-25537.683	3.566	-434284.514782
BK2	-121780.176	-25542.234	-5.840	711196.227840
P11	-121778.873	-25543.523	-14.779	1799769.964067
P20	-121792.001	-25557.013	-12.901	1571238.604901
MK6	-121792.612	-25556.424	11.213	-1365660.558356
C1	-121805.419	-25545.800	18.741	-2282755.357479
合計				-495.633809
合計面積				247.8169045
地積				247.81 m ²

平面図 (4号物件)



地番 ㊦ 129-7				
NO	Xn	Yn	Yn+1-Yn-1	Xn · (Yn+1-Yn-1)
281	-121874.013	-25471.623	2.959	-360625.204467
280	-121873.258	-25470.874	10.897	-1328052.892426
C.1	-121862.986	-25460.726	10.184	-1241052.649424
1382	-121862.946	-25460.690	-1.283	156350.159718
P19	-121861.619	-25462.009	-8.395	1023028.291505
P18	-121854.499	-25469.065	-19.468	2374700.476512
P17	-121841.865	-25481.497	-26.120	3182509.513800
P16	-121828.007	-25495.205	-27.345	3331386.851415
P15	-121814.094	-25508.842	-26.121	3181905.949374
1380	-121826.582	-25521.326	4.039	-492057.564698
108	-121942.357	-25504.803	47.493	-5786659.061001
506	-121871.910	-25473.833	33.180	-4043709.973800
合計				-2276.103492
合計面積				1138.0517480
地積				1138.05 m ²

地番 ㊦ 129-8				
NO	Xn	Yn	Yn+1-Yn-1	Xn · (Yn+1-Yn-1)
P4	-121855.154	-25462.007	16.482	-2008416.648228
P3	-121855.110	-25459.177	13.213	-1610071.568430
P2	-121844.079	-25448.794	10.347	-1260720.685413
P1	-121841.199	-25448.830	-8.871	1060853.276329
27	-121832.257	-25457.665	-21.179	2580285.371003
26	-121819.730	-25470.009	-19.774	2408863.341020
25	-121812.156	-25477.439	-15.500	1888088.418000
SK.1	-121803.989	-25485.509	-8.127	989901.018603
SK.3	-121804.044	-25485.566	-13.745	1674195.584780
C6	-121817.292	-25499.254	-3.794	462174.805848
PG	-121827.412	-25489.360	23.595	-2874517.786140
P5	-121841.299	-25475.659	27.353	-3332725.051547
合計				-2088.924175
合計面積				1044.4620875
地積				1044.46 m ²

平面図 (4号物件)

地番	㊦ 129-10			
NO	X _n	Y _n	Y _{n+1} -Y _{n-1}	X _n · (Y _{n+1} -Y _{n-1})
1381	-121817.459	-25530.881	13.851	-1687293.624609
P14	-121804.734	-25518.098	11.380	-1386137.872920
P13	-121803.314	-25519.501	-13.851	1687097.702214
K.1	-121816.440	-25531.949	-11.380	1386271.087200
合計				-62.708115
合計面積				31.3540575
地積				31.35 m ²

地番	㊦ 129-11			
NO	X _n	Y _n	Y _{n+1} -Y _{n-1}	X _n · (Y _{n+1} -Y _{n-1})
P7	-121802.738	-25513.620	9.560	-1164434.175280
K.72	-121794.857	-25506.785	6.738	-820653.746466
1200	-121794.759	-25506.882	7.870	-958524.753330
既C.1	-121784.866	-25498.915	6.949	-846283.033834
既P.1	-121783.261	-25499.933	-1.286	156613.273646
P.2	-121782.964	-25500.201	-16.412	1998702.005168
P.1	-121799.986	-25516.345	-13.419	1634434.012134
合計				-146.417962
合計面積				73.2089810
地積				73.20 m ²

平面図 (4号物件)



求積表

地番	Xn	Yn	Yn+1-Yn-1	Xn-(Yn+1-Yn-1)
K3	-121782.230	-25495.452	1.534	-186613.940820
K4	-121781.970	-25494.332	3.277	-399076.506350
K5	-121776.205	-25492.182	2.890	-350715.470450
K6	-121776.504	-25491.452	9.482	-1709359.052448
K7	-121789.912	-25492.320	9.300	1132562.481660
P1	-121788.908	-25492.182	1.819	-197162.734135
C1	-121777.724	-25486.701	2.691	-327703.855294
K2	-121775.191	-25479.461	1.753	-213471.909823
C3	-121774.120	-25478.949	4.585	-521892.104200
P2	-121768.322	-25476.174	0.550	-66971.427100
C4	-121764.952	-25478.399	3.261	-408624.287862
RC1	-121749.100	-25471.825	-1.274	155107.150940
RP1	-121745.299	-25479.672	-1.922	235211.917658
R1	-121730.902	-25473.737	7.514	-914685.997628
K1	-121730.295	-25472.168	3.050	-371265.260200
N96	-121732.067	-25479.707	-4.008	487854.208856
K143	-121720.673	-25475.106	-7.222	899760.693216
P4	-121726.756	-25478.099	-5.517	671566.733532
P3	-121737.724	-25481.983	-9.231	1131055.193884
C6	-121751.741	-25487.390	-11.815	1438496.819945
C3	-121767.263	-25493.498	-10.490	1277338.588570
K10	-121778.419	-25497.895	3.936	479319.857194
RC2	-121778.756	-25497.434	2.018	-245352.434724
RC4	-121781.511	-25495.866	1.975	-246518.494225
合計				-1275.781074
合計面積				637.880570
換積				637.88
				m ²

測量年月日	令和 2年12月20日
測標系	VI系

