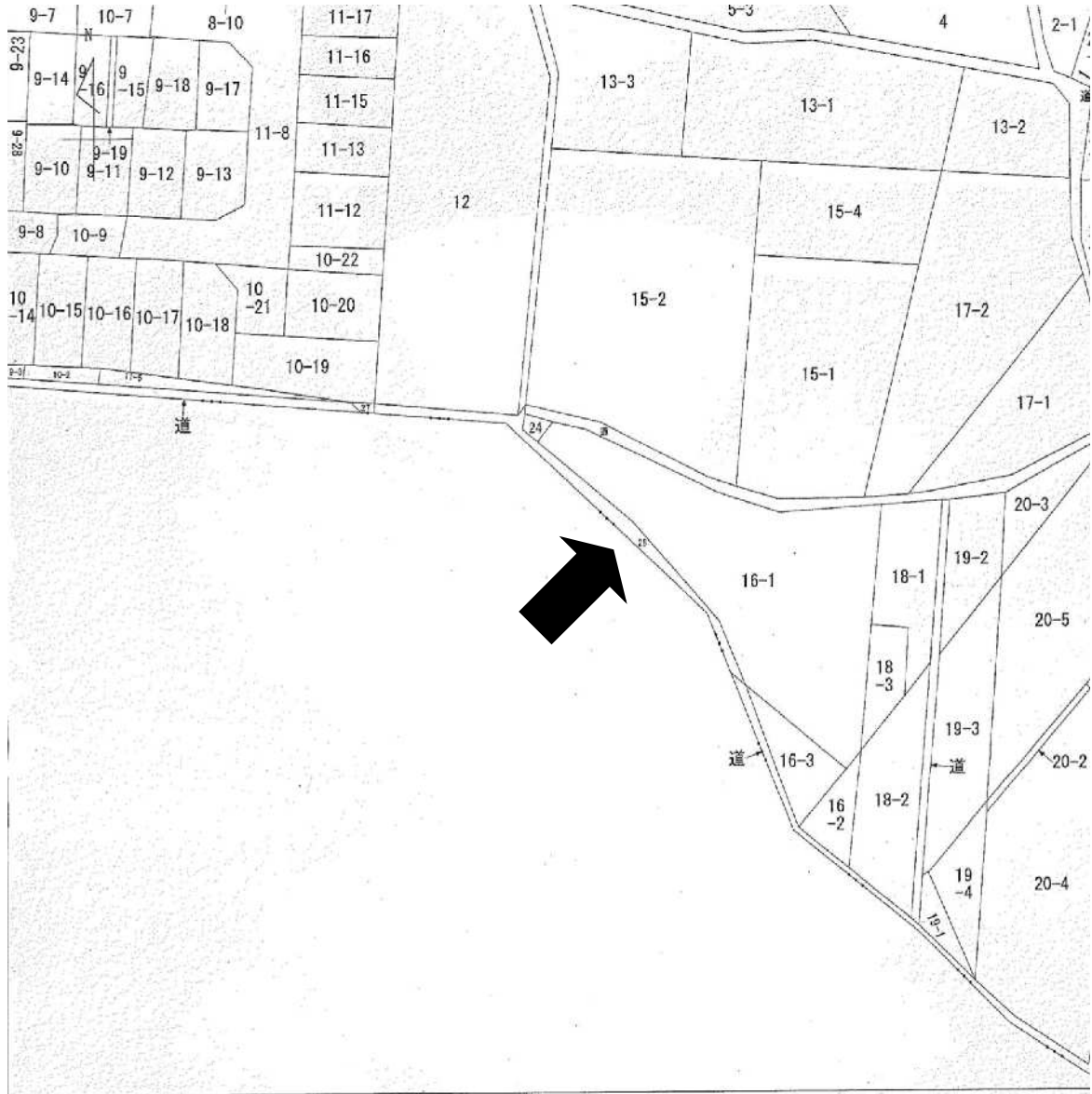
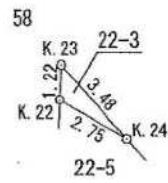


公図 (3号物件)



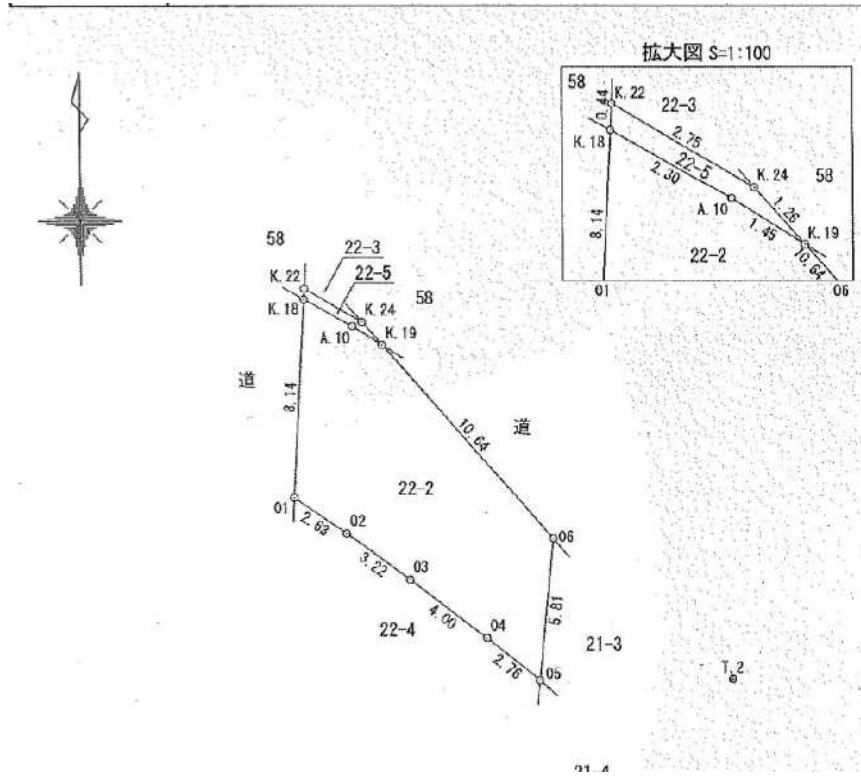
平面図 (3号物件)



座標求積表

地番 22-3				
NO	Xn	Yn	Yn+1-Yn-1	Xn · (Yn+1-Yn-1)
K. 23	-117117.381	-17184.564	2.383	-279090.718923
K. 24	-117119.972	-17182.237	-0.066	7729.918152
K. 22	-117118.599	-17184.620	-2.317	271363.793883
倍面積				2.993112
面積				1.4965560
地積				1.49 m ²

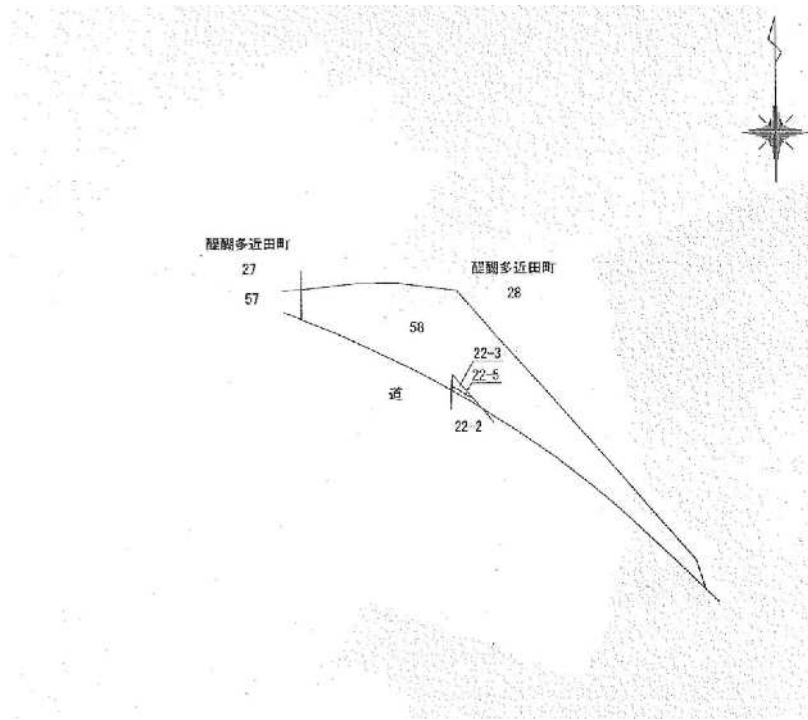
平面図 (3号物件)



地番	22-5				
NO	X_n	Y_n	Y_n+1-Y_n-1	$X_n \cdot (Y_n+1-Y_n-1)$	
K. 22	-117118.599	-17184.620	2.407	-281904.467793	
K. 24	-117119.972	-17182.237	3.222	-377360.549784	
K. 19	-117120.910	-17181.398	-0.388	45442.913080	
A. 10	-117120.143	-17182.625	-3.246	380171.984178	
K. 18	-117119.035	-17184.644	-1.995	233652.474825	
			倍面積	2.354506	
			面積	1.1772530	
			地積	1.17	m ²

合計面積	82.3057690 m ²
------	---------------------------

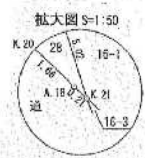
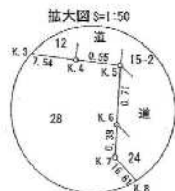
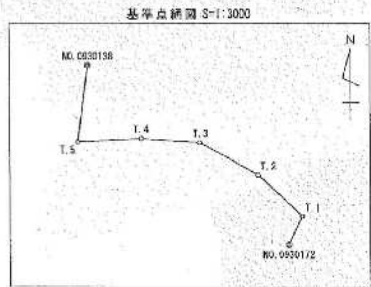
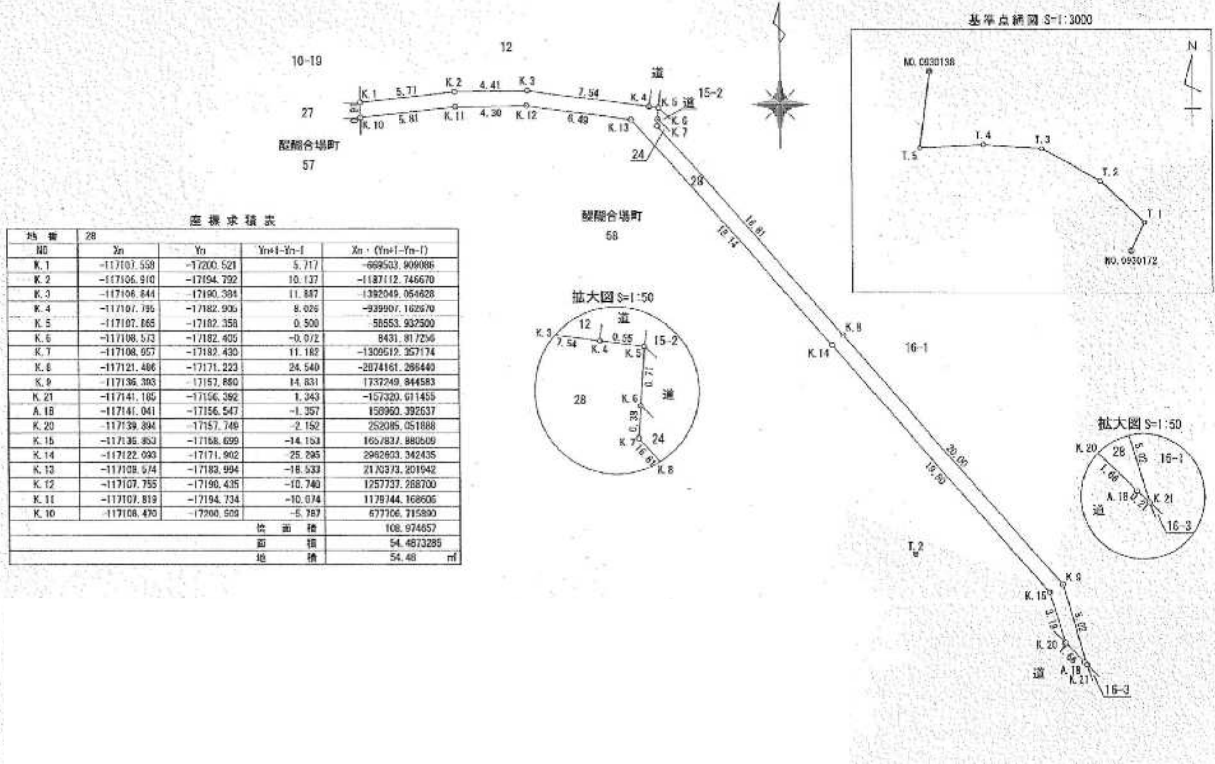
平面図 (3号物件)



座標求積表

地番	50				
NO	X _n	Y _n	Y _{n+1} -Y _{n-1}	X _n · (Y _{n+1} -Y _{n-1})	
K. 10	-117108.470	-17200.509	5.732	-671265.750040	
K. 11	-117107.819	-17194.734	10.074	-1179744.168606	
K. 12	-117107.755	-17190.435	10.740	-1257737.288760	
K. 13	-117108.574	-17183.094	18.533	-2170373.201942	
K. 14	-117122.093	-17171.902	25.295	-2962603.342435	
K. 15	-117136.853	-17158.099	14.153	-1657837.880509	
K. 20	-117139.894	-17157.749	-1.862	229828.472028	
A. 17	-117137.115	-17160.661	-4.807	563078.111805	
A. 16	-117135.351	-17162.556	-4.966	581694.153066	
A. 15	-117132.533	-17165.627	-4.748	556145.266684	
A. 14	-117131.083	-17167.304	-4.521	529549.626243	
A. 13	-117128.742	-17170.148	-6.285	736154.143470	
A. 12	-117126.071	-17173.589	-8.021	939468.215491	
A. 11	-117122.928	-17178.169	-7.809	914612.944752	
K. 19	-117120.910	-17181.398	-4.068	476447.861880	
K. 24	-117119.972	-17182.237	-3.156	369630.631632	
K. 23	-117117.381	-17184.554	-2.383	279090.718923	
K. 22	-117118.599	-17184.620	-0.090	10540.673910	
K. 18	-117119.035	-17184.644	-1.843	227562.285005	
A. 9	-117117.981	-17186.563	-3.992	467534.980152	
A. 8	-117116.922	-17188.636	-3.744	438485.755968	
A. 7	-117116.095	-17190.307	-8.147	954144.825965	
A. 6	-117113.081	-17196.783	-10.159	1189751.789879	
K. 17	-117111.599	-17200.466	-3.726	436357.817874	
				倍面積	516.642495
				面積	258.3212475
				地積	258.32 m ²

平面図 (3号物件)



座標求積表

地番	28	Xp	Yp	Yp+1-Yp	Xp · (Yp+1-Yp)
K.1	-117107.558	-17200.521	5.717	-689521.909086	
K.2	-117106.910	-17194.292	10.137	-1187112.745670	
K.3	-117106.844	-17190.334	11.887	-1382049.954828	
K.4	-117107.735	-17182.936	8.026	-949907.102970	
K.5	-117107.868	-17182.358	0.500	-58553.929500	
K.6	-117108.512	-17182.405	-0.072	8431.917256	
K.7	-117108.057	-17182.430	11.182	-1309512.357174	
K.8	-117121.486	-17171.223	24.540	-2874161.286440	
K.9	-117136.303	-17157.850	14.631	-1732249.844583	
K.21	-117141.185	-17156.382	1.343	-157320.611455	
A.18	-117141.041	-17156.547	-1.357	150950.392537	
K.20	-117139.384	-17157.740	-2.152	252095.251888	
K.15	-117136.852	-17158.629	-14.153	1627837.886509	
K.14	-117122.033	-17171.902	25.295	2982623.342435	
K.13	-117108.574	-17183.894	-18.533	2110373.201942	
K.12	-117107.755	-17190.435	-10.740	1257737.288700	
K.11	-117107.819	-17194.734	-10.074	1179744.168506	
K.10	-117108.470	-17200.509	-5.769	677706.715800	
総面積					108.674857
面積					54.4873285
地積					54.48