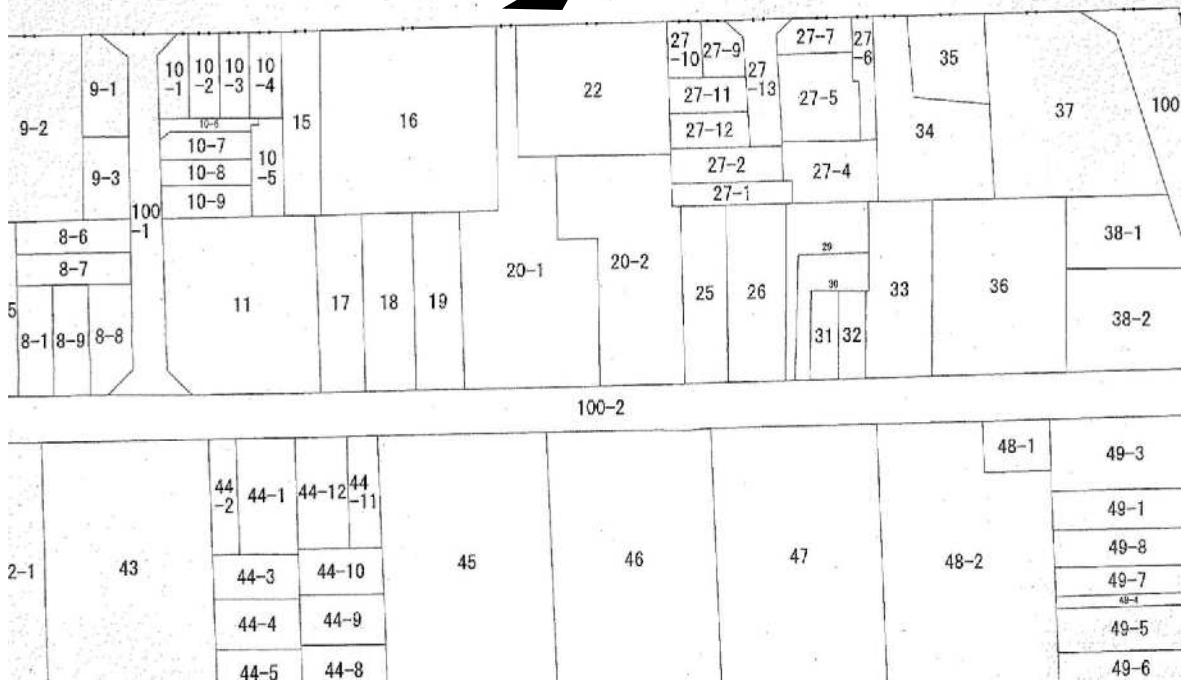
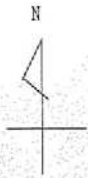
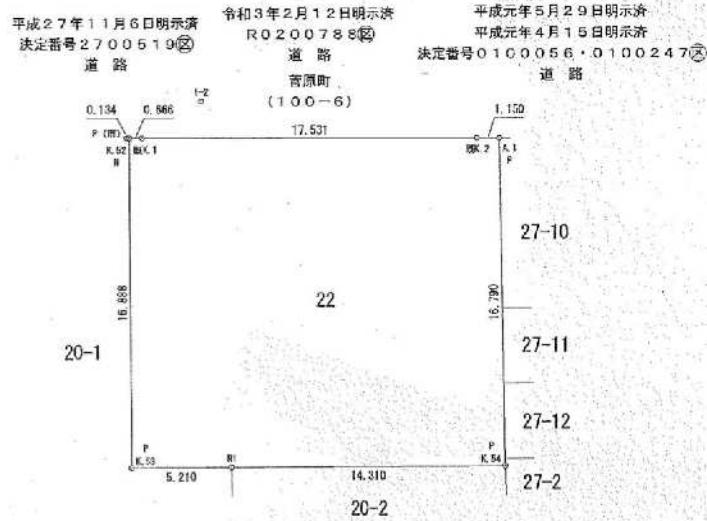


公図 (2号物件)



平面図 (2号物件)



座標求積表 (世界測地 第6系)

地番	22			
測点	X_n	Y_n	$X_{n+1}-X_{n-1}$	$Y_n \cdot (X_{n+1} - X_{n-1})$
A. 1	-114284.469	-24461.852	-16.827	411619.583804
K. 54	-114301.254	-24462.249	-16.380	400691.638620
R. 1	-114300.849	-24476.553	0.552	-13511.057256
K. 53	-114300.702	-24481.761	17.025	-416801.981025
K. 52	-114283.824	-24481.188	16.858	-412703.867304
既K. 1	-114283.844	-24480.522	-0.603	14761.754766
既K. 2	-114284.427	-24463.001	-0.625	15289.375625
			合計	654.562970
			面積	327.2764850
			地積	327.27 m ²