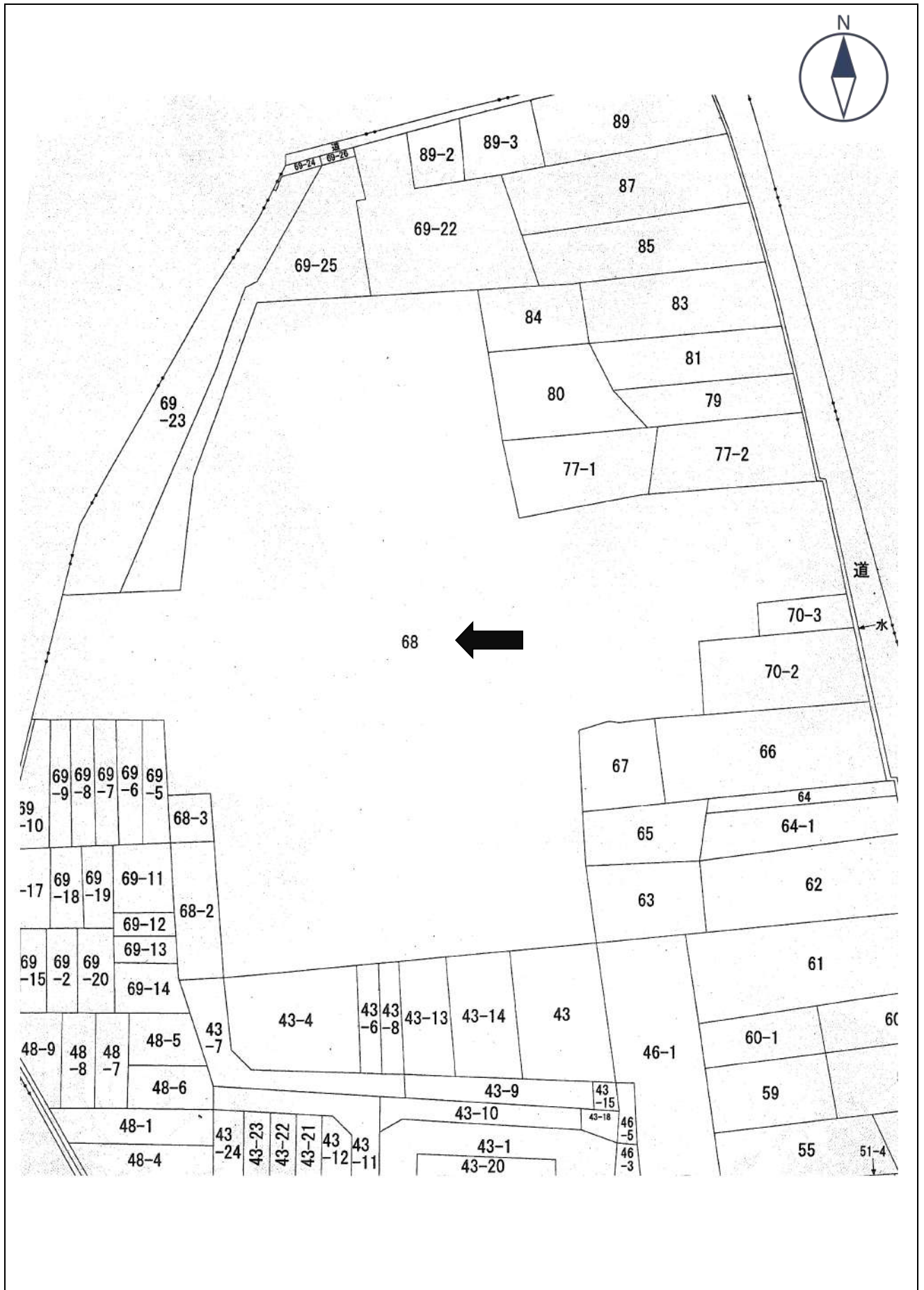
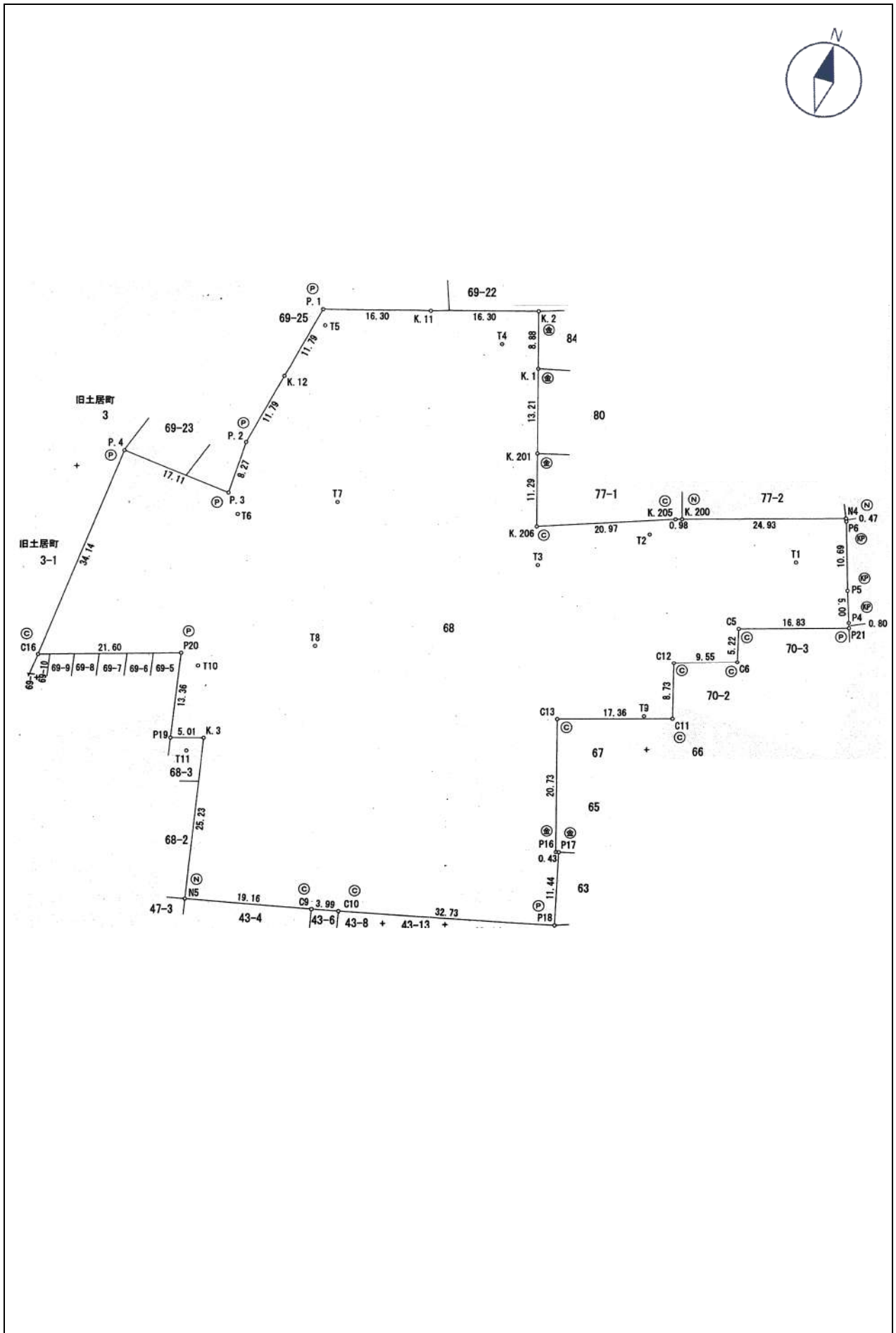


公図 (6号物件)

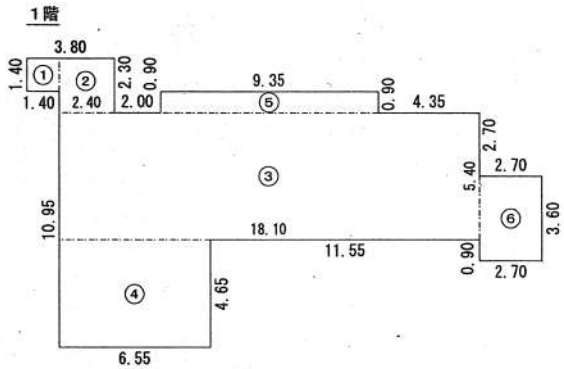
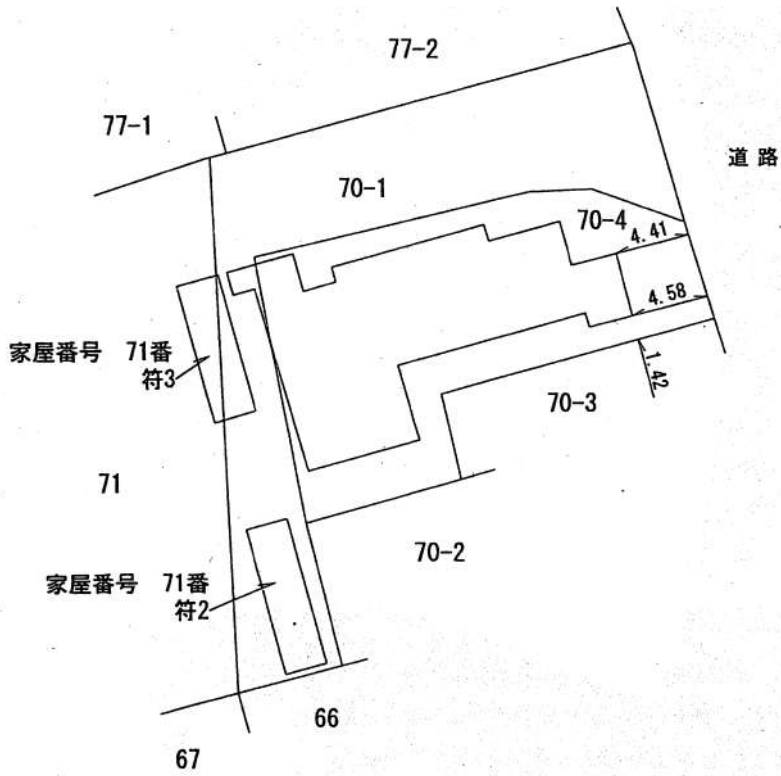


平面図 (6号物件)



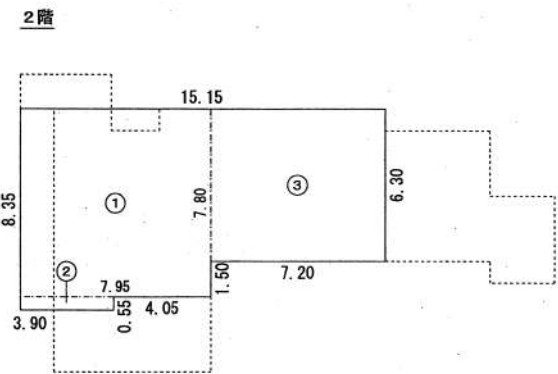
建物平面図 (6号物件)

分館



求積表

①	1.40 × 1.40	=	1.9600
②	2.40 × 2.30	=	5.5200
③	18.10 × 5.40	=	97.7400
④	6.55 × 4.65	=	30.4575
⑤	9.35 × 0.90	=	8.4150
⑥	2.70 × 3.60	=	9.7200
計			153.8125
床面積			153.81 m ²

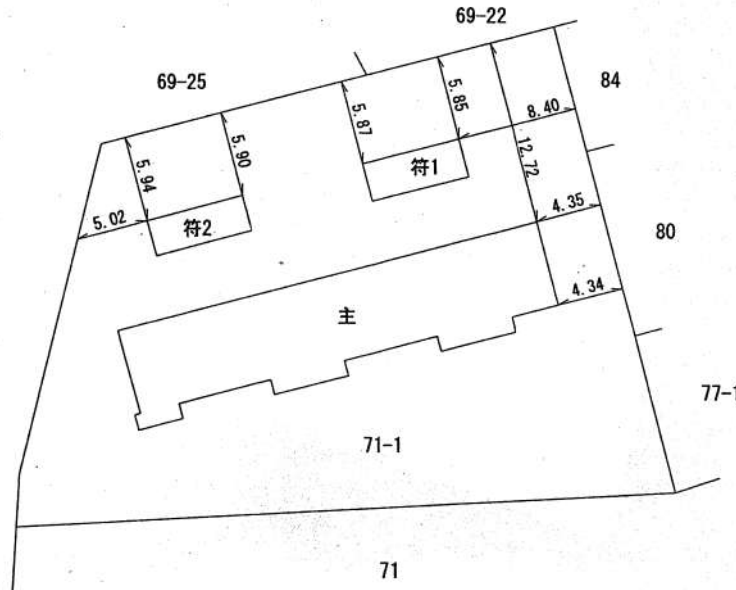


求積表

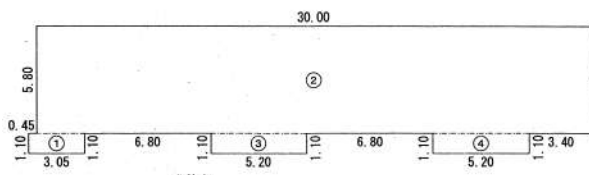
①	7.95 × 7.80	=	62.0100
②	3.90 × 0.55	=	2.1450
③	7.20 × 6.30	=	45.3600
計			109.5150
床面積			109.51 m ²

建物平面図 (6号物件)

1号館 (1階~4階, 附属建物1~2)



主である建物1階

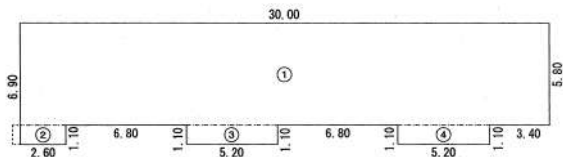


求積表

①	3.05 × 1.10	=	3.3550
②	30.00 × 5.80	=	174.0000
③	5.20 × 1.10	=	5.7200
④	5.20 × 1.10	=	5.7200
計 188.7950			

床面積 188.79 m²

主である建物2階

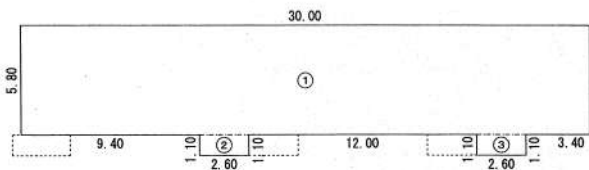


求積表

①	30.00 × 5.80	=	174.0000
②	2.60 × 1.10	=	2.8600
③	5.20 × 1.10	=	5.7200
④	5.20 × 1.10	=	5.7200
計 188.3000			

床面積 188.30 m²

主である建物3階

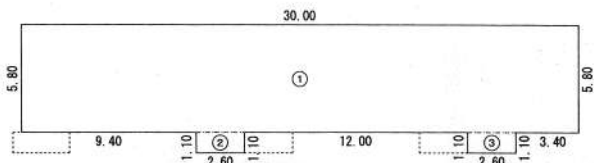


求積表

①	30.00 × 5.80	=	174.0000
②	2.60 × 1.10	=	2.8600
③	2.60 × 1.10	=	2.8600
計 179.7200			

床面積 179.72 m²

主である建物4階

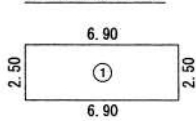


求積表

①	30.00 × 5.80	=	174.0000
②	2.60 × 1.10	=	2.8600
③	2.60 × 1.10	=	2.8600
計 179.7200			

床面積 179.72 m²

附属建物 (符号1)

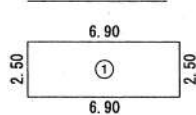


求積表

①	6.90 × 2.50	=	17.2500
---	-------------	---	---------

床面積 17.25 m²

附属建物 (符号2)



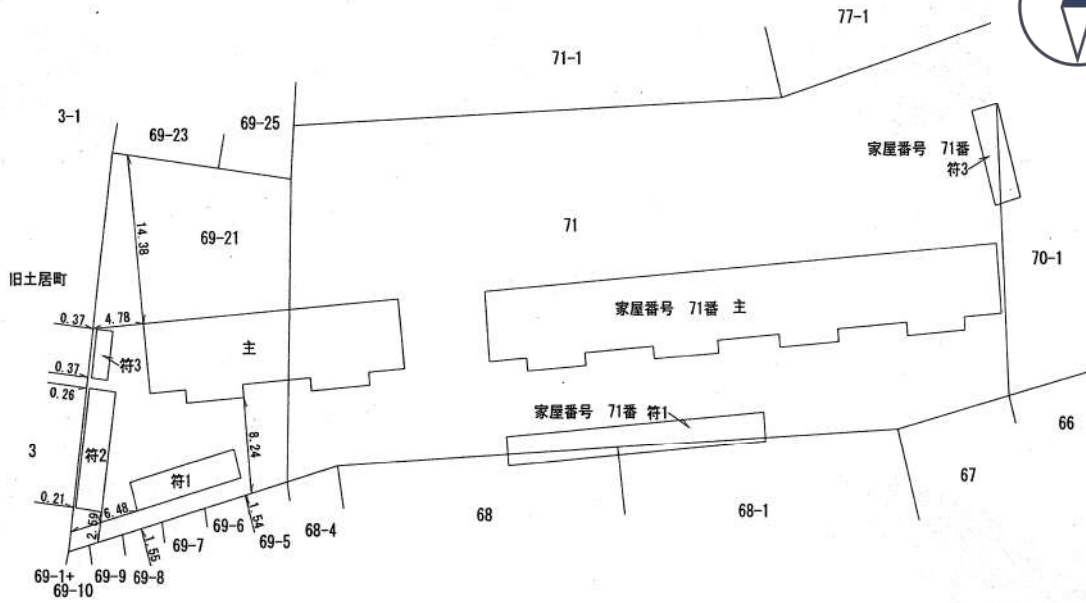
求積表

①	6.90 × 2.50	=	17.2500
---	-------------	---	---------

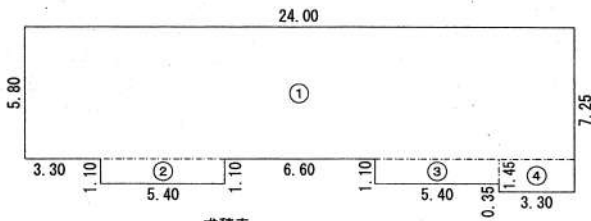
床面積 17.25 m²

建物平面図 (6号物件)

2号館 (1階~4階)



主である建物1階

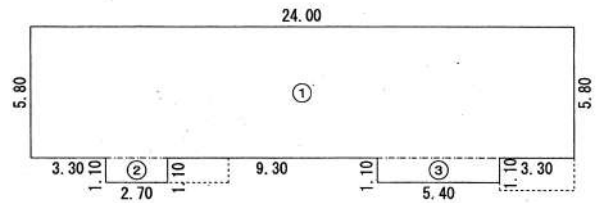


求積表

①	24.00 × 5.80	=	139.2000
②	5.40 × 1.10	=	5.9400
③	5.40 × 1.10	=	5.9400
④	3.30 × 1.45	=	4.7850
計			155.8650

床面積 155.86 m²

主である建物2階

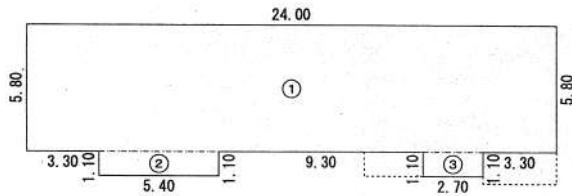


求積表

①	24.00 × 5.80	=	139.2000
②	2.70 × 1.10	=	2.9700
③	5.40 × 1.10	=	5.9400
計			148.1100

床面積 148.11 m²

主である建物3階

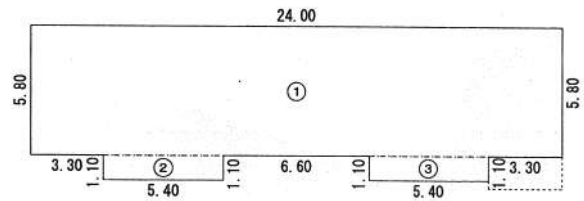


求積表

①	24.00 × 5.80	=	139.2000
②	5.40 × 1.10	=	5.9400
③	2.70 × 1.10	=	2.9700
計			148.1100

床面積 148.11 m²

主である建物4階



求積表

①	24.00 × 5.80	=	139.2000
②	5.40 × 1.10	=	5.9400
③	5.40 × 1.10	=	5.9400
計			151.0800

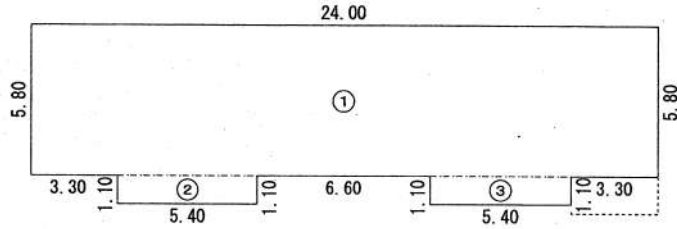
床面積 151.08 m²

建物平面図 (6号物件)

2号館 (5階, 附属建物1~3)



主である建物5階



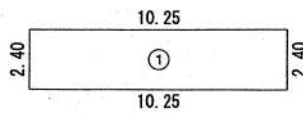
求積表

①	24.00 × 5.80	= 139.2000
②	5.40 × 1.10	= 5.9400
③	5.40 × 1.10	= 5.9400

計 151.0800

床面積 151.08 m²

附属建物 (符号1)

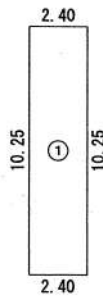


求積表

①	10.25 × 2.40	= 24.6000
---	--------------	-----------

床面積 24.60 m²

附属建物 (符号2)

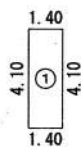


求積表

①	2.40 × 10.25	= 24.6000
---	--------------	-----------

床面積 24.60 m²

附属建物 (符号3)



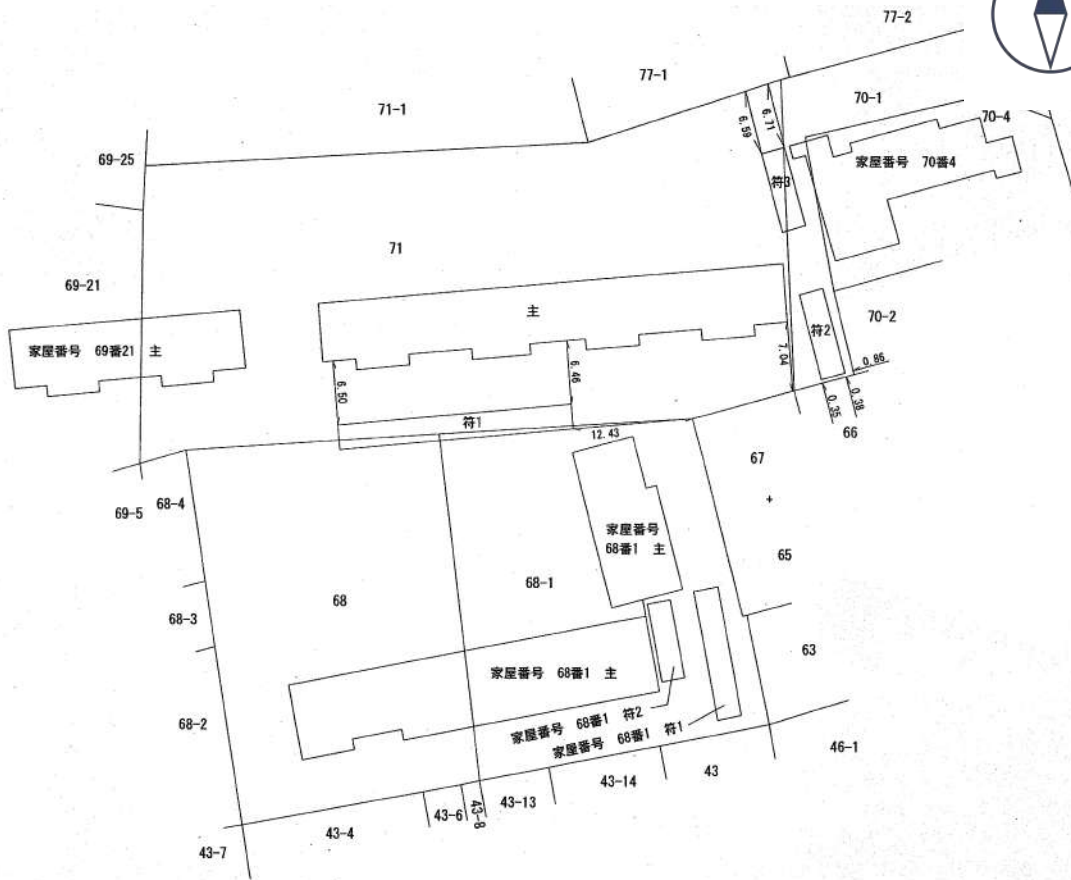
求積表

①	1.40 × 4.10	= 5.7400
---	-------------	----------

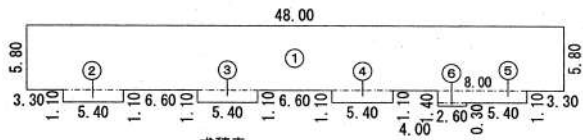
床面積 5.74 m²

建物平面図 (6号物件)

3号館 (1階~4階)



主である建物1階



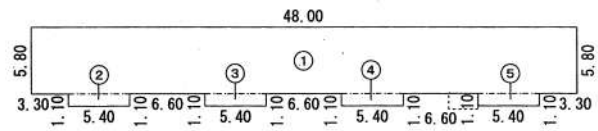
求積表

①	48.00 × 5.80	=	278.4000
②	5.40 × 1.10	=	5.9400
③	5.40 × 1.10	=	5.9400
④	5.40 × 1.10	=	5.9400
⑤	8.00 × 1.10	=	8.8000
⑥	2.60 × 0.30	=	0.7800

計 305.8000

床面積 305.80 m²

主である建物2階



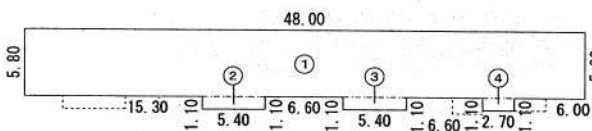
求積表

①	48.00 × 5.80	=	278.4000
②	5.40 × 1.10	=	5.9400
③	5.40 × 1.10	=	5.9400
④	5.40 × 1.10	=	5.9400
⑤	5.40 × 1.10	=	5.9400

計 302.1600

床面積 302.16 m²

主である建物3階



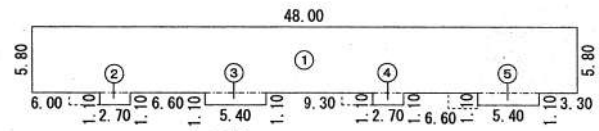
求積表

①	48.00 × 5.80	=	278.4000
②	5.40 × 1.10	=	5.9400
③	5.40 × 1.10	=	5.9400
④	2.70 × 1.10	=	2.9700

計 293.2500

床面積 293.25 m²

主である建物4階



求積表

①	48.00 × 5.80	=	278.4000
②	2.70 × 1.10	=	2.9700
③	5.40 × 1.10	=	5.9400
④	2.70 × 1.10	=	2.9700
⑤	5.40 × 1.10	=	5.9400

計 296.2200

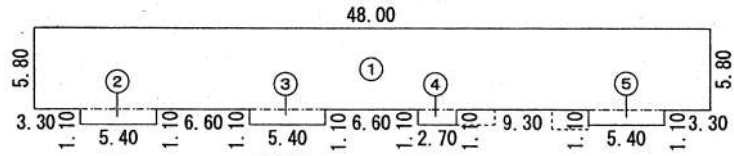
床面積 296.22 m²

建物平面図 (6号物件)

3号館 (5階, 附属建物1~3)



主である建物5階



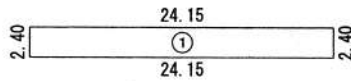
求積表

①	48.00 × 5.80	= 278.4000
②	5.40 × 1.10	= 5.9400
③	5.40 × 1.10	= 5.9400
④	2.70 × 1.10	= 2.9700
⑤	5.40 × 1.10	= 5.9400

計 299.1900

床面積 299.19 m²

附属建物 (符号1)

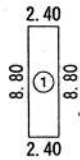


求積表

① 24.15 × 2.40 = 57.9600

床面積 57.96 m²

附属建物 (符号2)

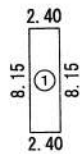


求積表

① 2.40 × 8.80 = 21.1200

床面積 21.12 m²

附属建物 (符号3)



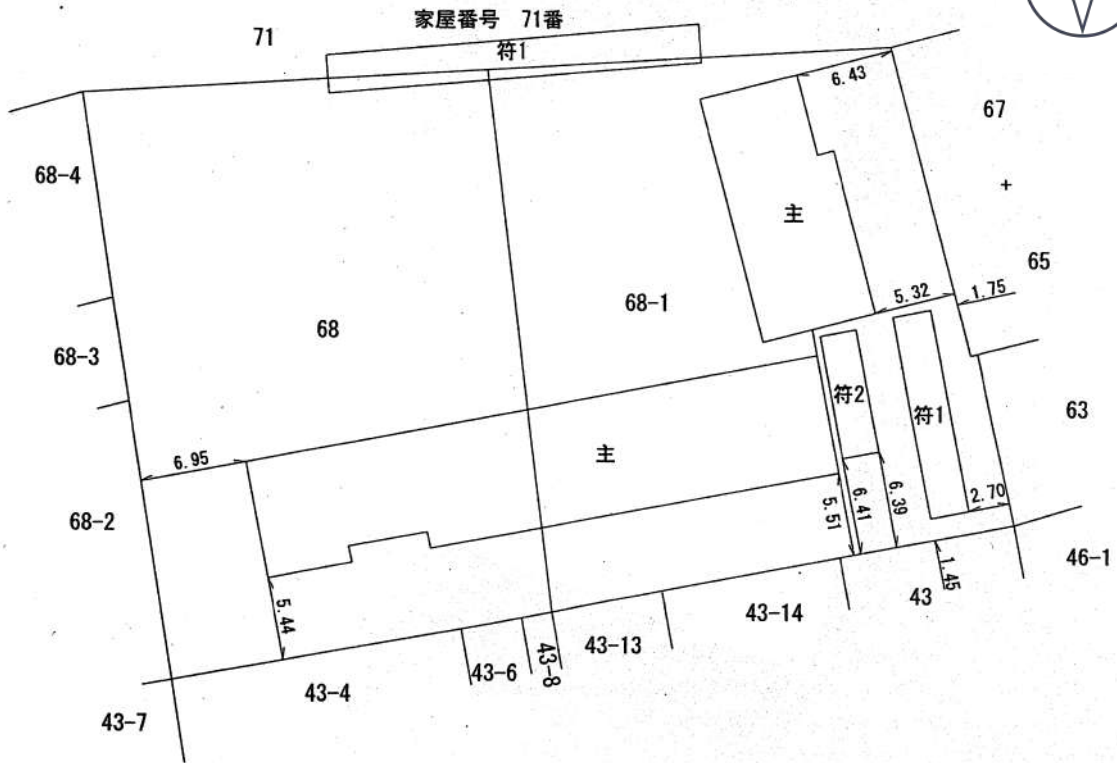
求積表

① 2.40 × 8.15 = 19.5600

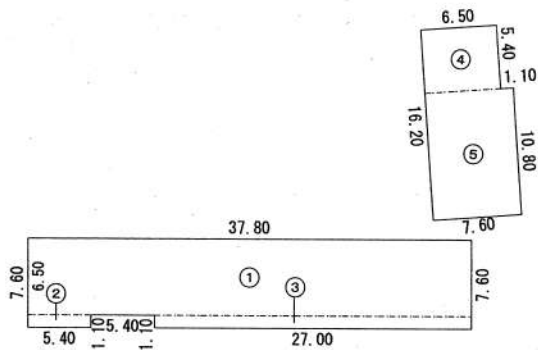
床面積 19.56 m²

建物平面図 (6号物件)

4号館 (1階~2階)



主である建物1階

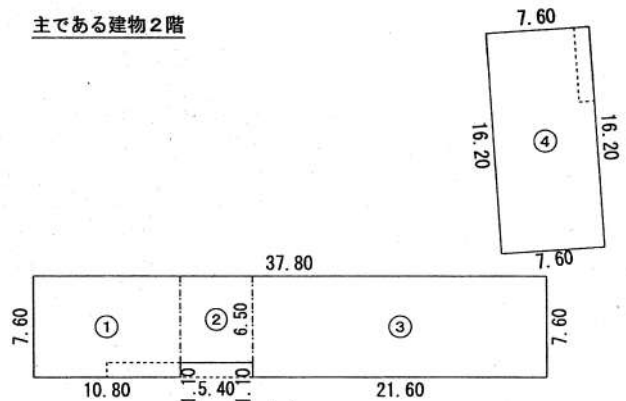


求積表

①	37.80 × 6.50	=	245.7000
②	5.40 × 1.10	=	5.9400
③	27.00 × 1.10	=	29.7000
④	6.50 × 5.40	=	35.1000
⑤	7.60 × 10.80	=	82.0800
計			398.5200

床面積 398.52 m²

主である建物2階



求積表

①	10.80 × 7.60	=	82.0800
②	5.40 × 6.50	=	35.1000
③	21.60 × 7.60	=	164.1600
④	7.60 × 16.20	=	123.1200
計			404.4600

床面積 404.46 m²

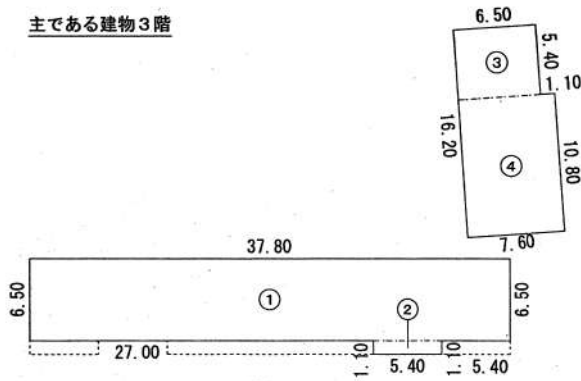
建物平面図 (6号物件)

4号館 (3階~5階, 附属建物1~2)



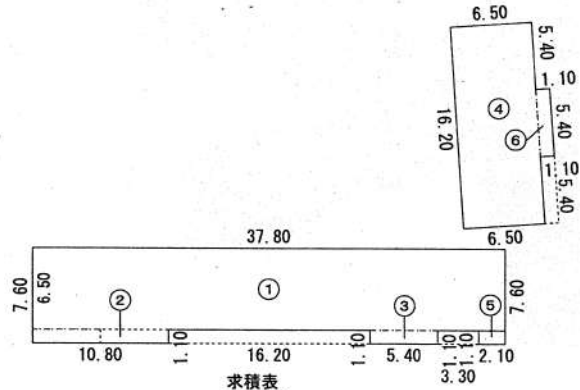
主である建物4階

主である建物3階



①	37.80 × 6.50	=	245.7000
②	10.80 × 1.10	=	11.8800
③	6.50 × 5.40	=	35.1000
④	7.60 × 10.80	=	82.0800
計			368.8200

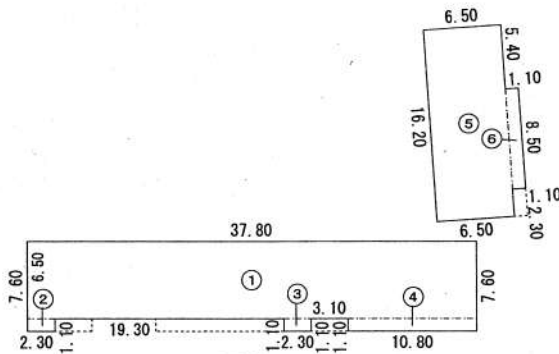
床面積 368.82 m²



①	37.80 × 6.50	=	245.7000
②	10.80 × 1.10	=	11.8800
③	5.40 × 1.10	=	5.9400
④	6.50 × 16.20	=	105.3000
⑤	2.10 × 1.10	=	2.3100
⑥	1.10 × 5.40	=	5.9400
計			377.0700

床面積 377.07 m²

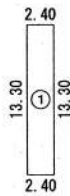
主である建物5階



①	37.80 × 6.50	=	245.7000
②	2.30 × 1.10	=	2.5300
③	2.30 × 1.10	=	2.5300
④	10.80 × 1.10	=	11.8800
⑤	6.50 × 16.20	=	105.3000
⑥	1.10 × 8.50	=	9.3500
計			377.2900

床面積 377.29 m²

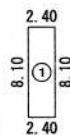
附属建物 (符号1)



①	2.40 × 13.30	=	31.9200
---	--------------	---	---------

床面積 31.92 m²

附属建物 (符号2)



①	2.40 × 8.10	=	19.4400
---	-------------	---	---------

床面積 19.44 m²