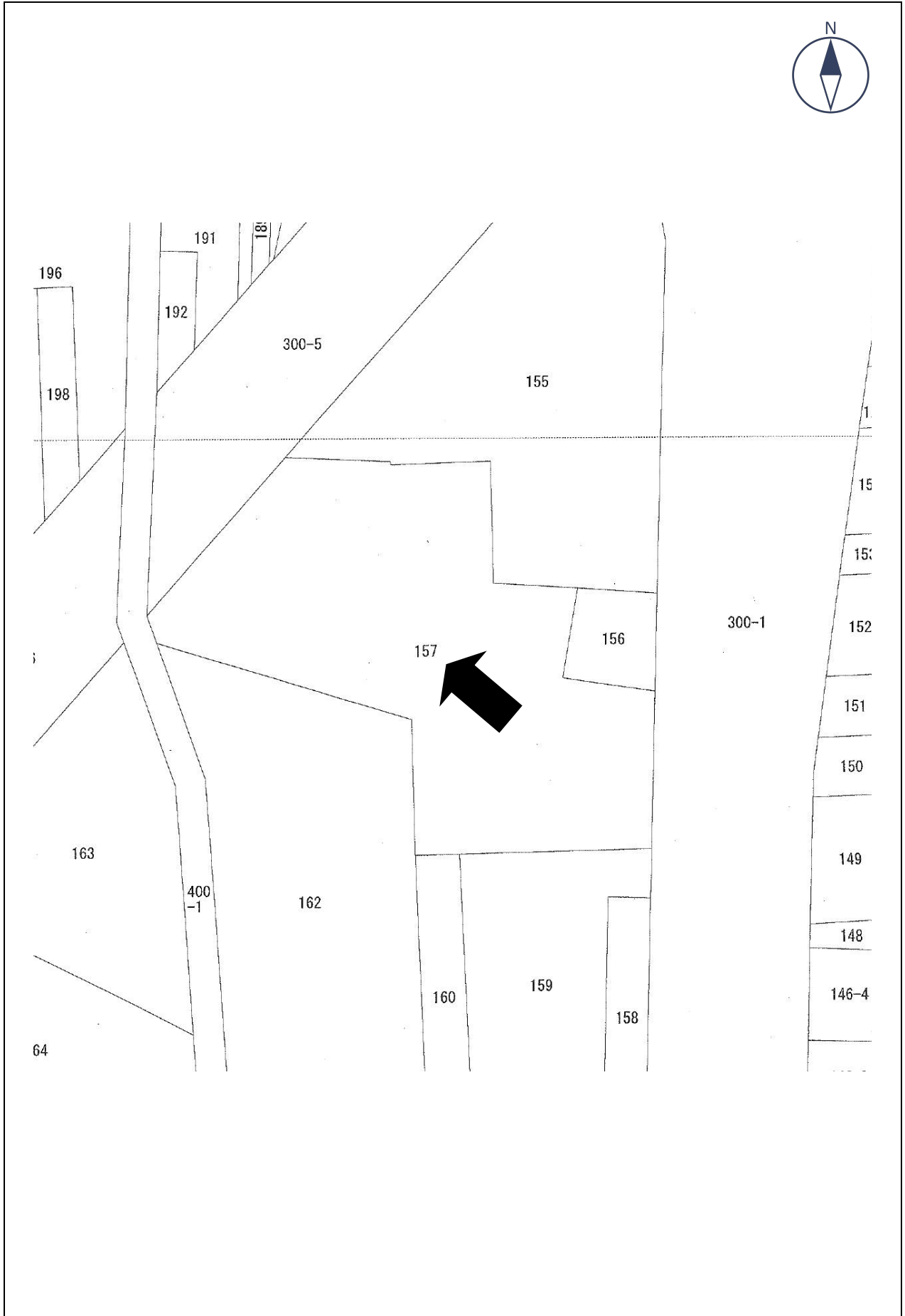
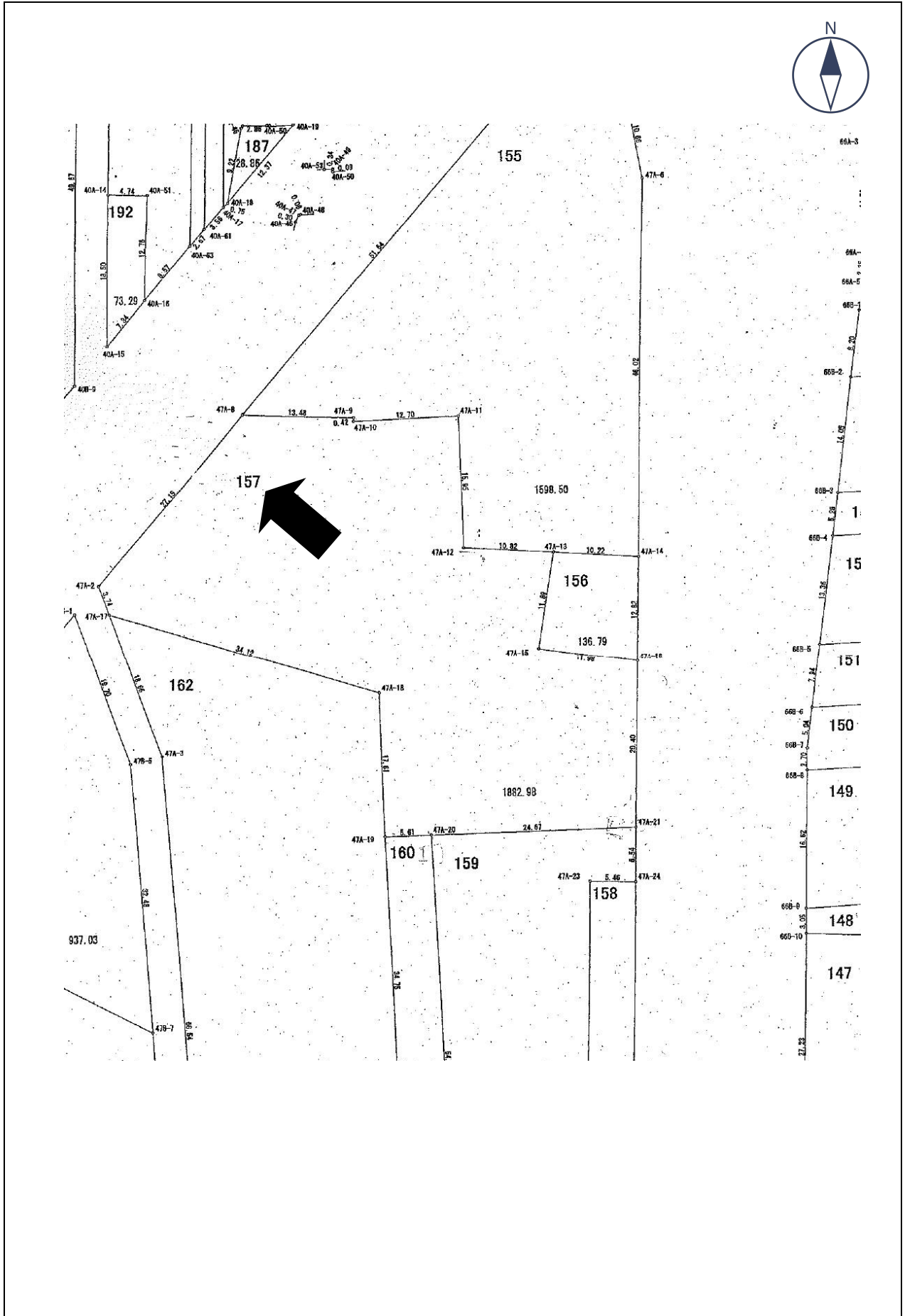


# 公図 (3号物件)



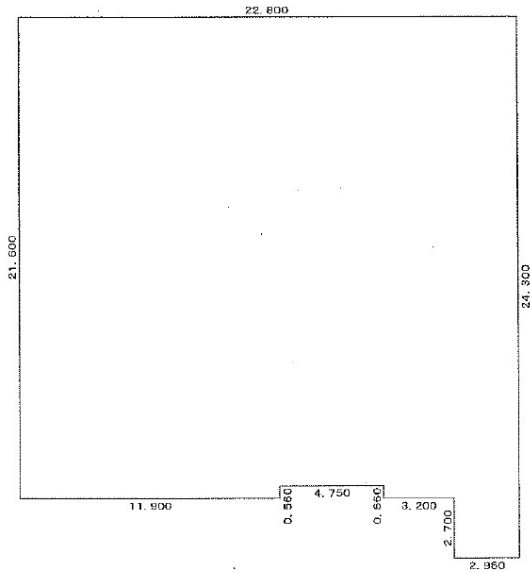
# 平面図 (3号物件)



# 建物平面図 (3号物件)



主 1階



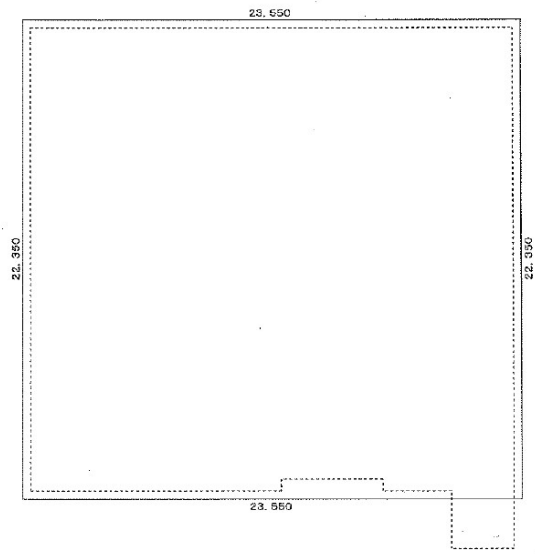
求積表

22.800	×	21.040	=	479.7120
6.150	×	0.560	=	3.4440
11.900	×	0.560	=	6.6640
2.950	×	2.700	=	7.9650

計 497.7850

床面積 497.78 m<sup>2</sup>

主 2階

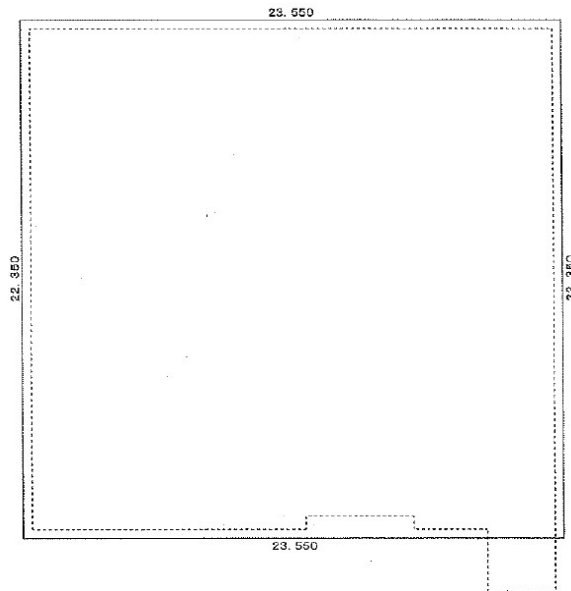


求積表

$$23.550 \times 22.350 = 526.3425$$

床面積 526.34 m<sup>2</sup>

主 3階



求積表

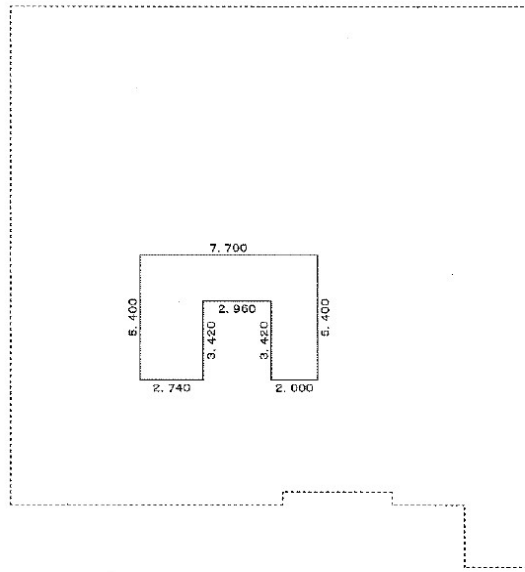
$$23.550 \times 22.350 = 526.3425$$

床面積 526.34 m<sup>2</sup>

# 建物平面図 (3号物件)



主 4階

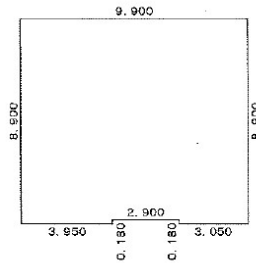


求積表

2.740	×	5.400	=	14.7960
2.960	×	1.980	=	5.8608
2.000	×	5.400	=	10.8000
計				31.4568

床面積 31.45 m<sup>2</sup>

符号1

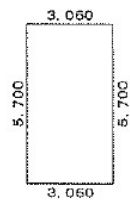


求積表

3.950	×	0.180	=	0.7110
9.900	×	8.720	=	86.3280
3.050	×	0.180	=	0.5490
計				87.5880

床面積 87.58 m<sup>2</sup>

符号2



求積表

3.060	×	5.700	=	17.4420
-------	---	-------	---	---------

床面積 17.44 m<sup>2</sup>