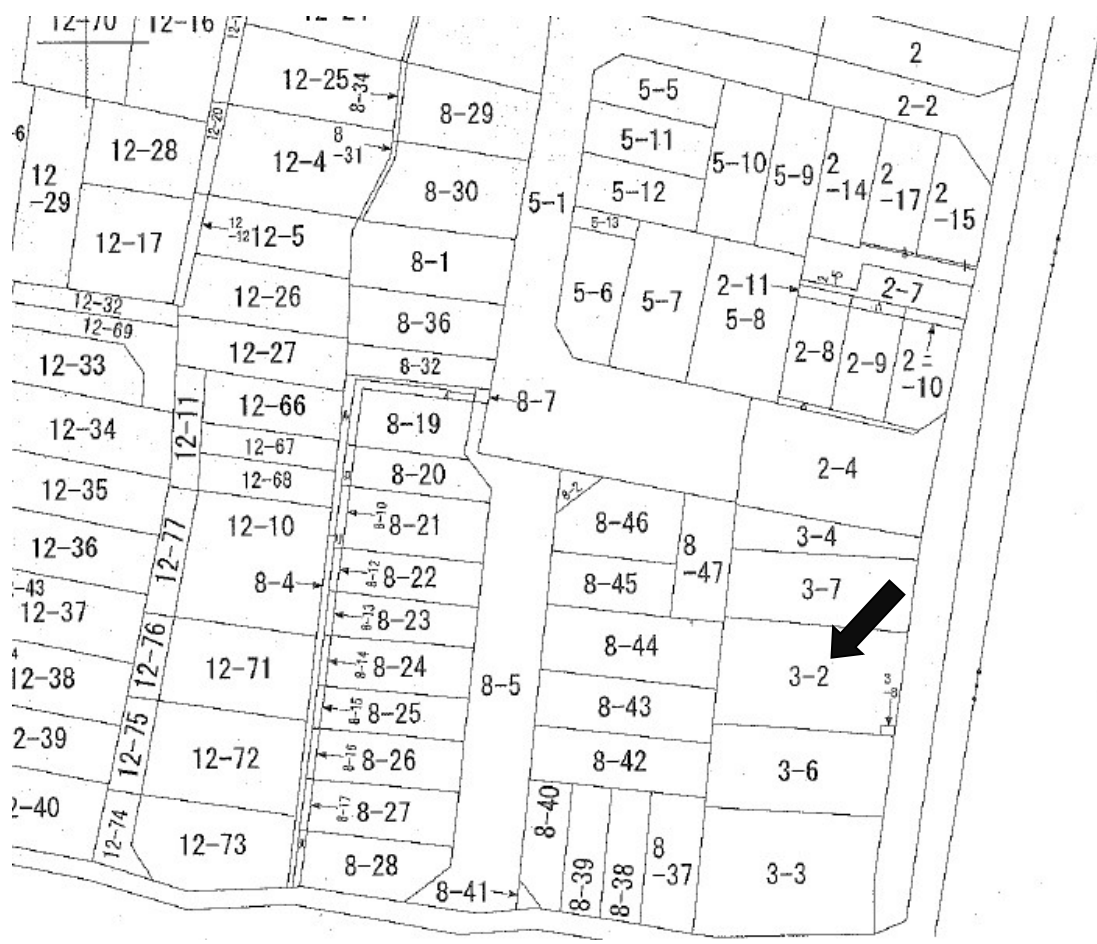
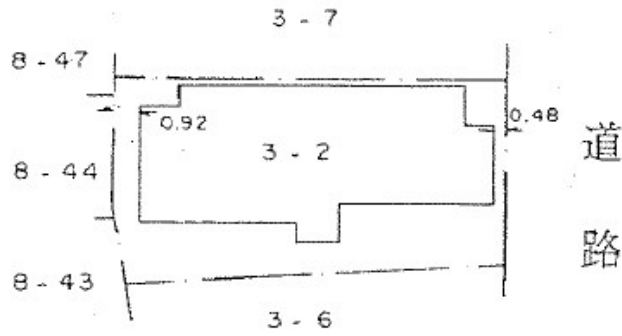
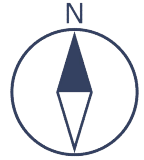


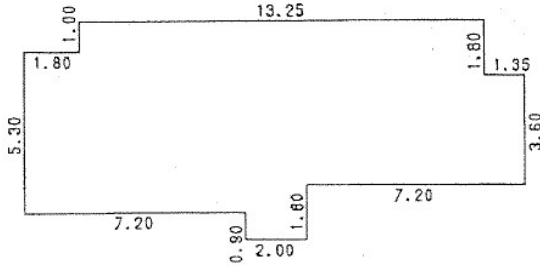
公図 (4号物件)



建物平面図 (4号物件)



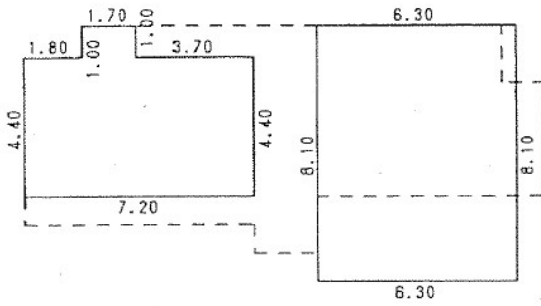
1 階



求積表

5.30 X	1.80 =	9.5400
6.30 X	5.40 =	34.0200
7.20 X	2.00 =	14.4000
5.40 X	5.85 =	31.5900
3.60 X	1.35 =	4.8600
合計		94.4100
床面積		94.41 m ²

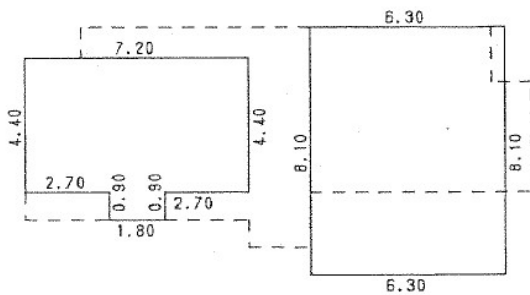
2 階



求積表

1.70 X	1.00 =	1.7000
7.20 X	4.40 =	31.6800
6.30 X	8.10 =	51.0300
合計		84.4100
床面積		84.41 m ²

3階、4階 (各階同型)



求積表

7.20 X	4.40 =	31.6800
1.80 X	0.90 =	1.6200
6.30 X	8.10 =	51.0300
合計		84.3300
床面積		84.33 m ²