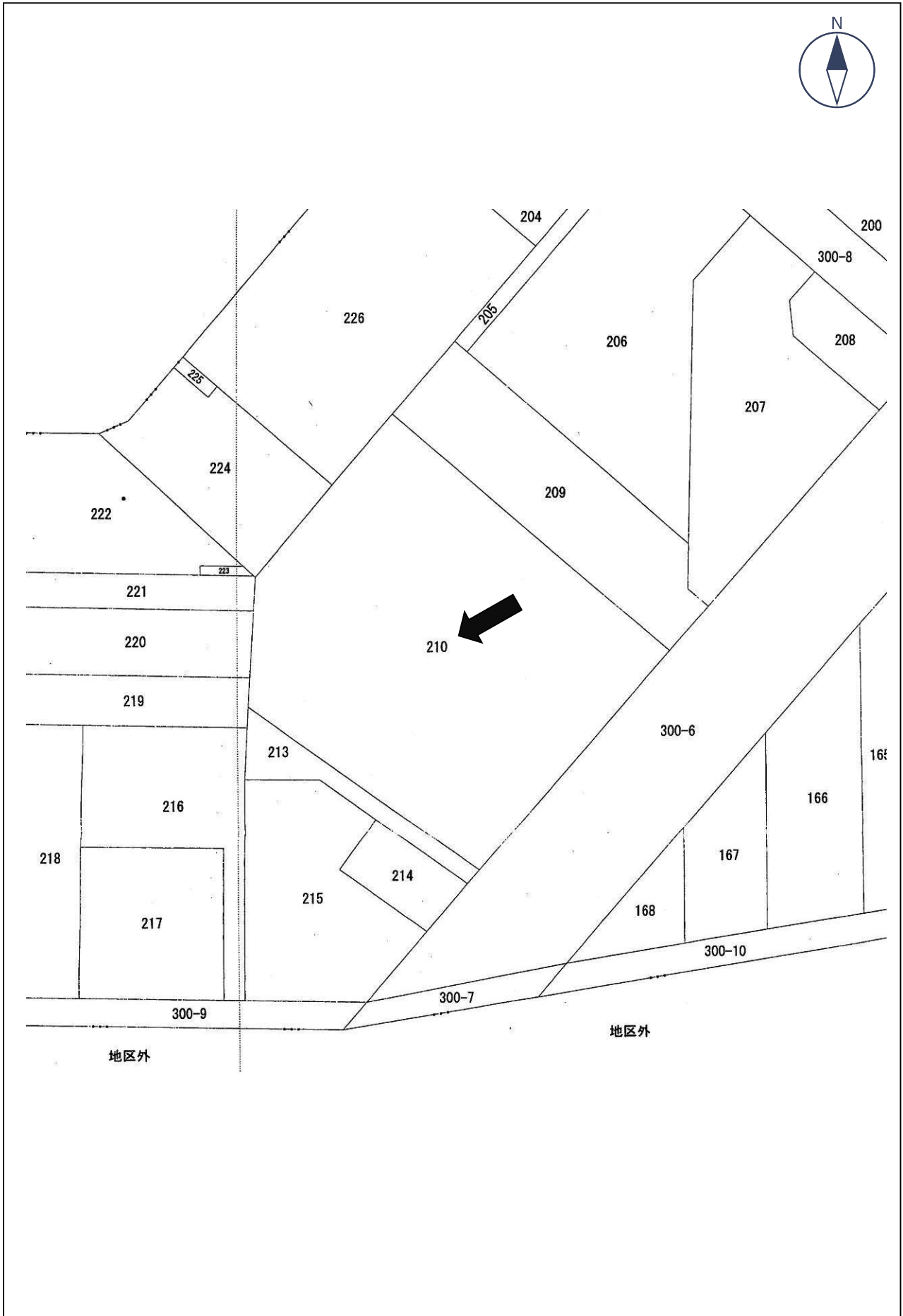
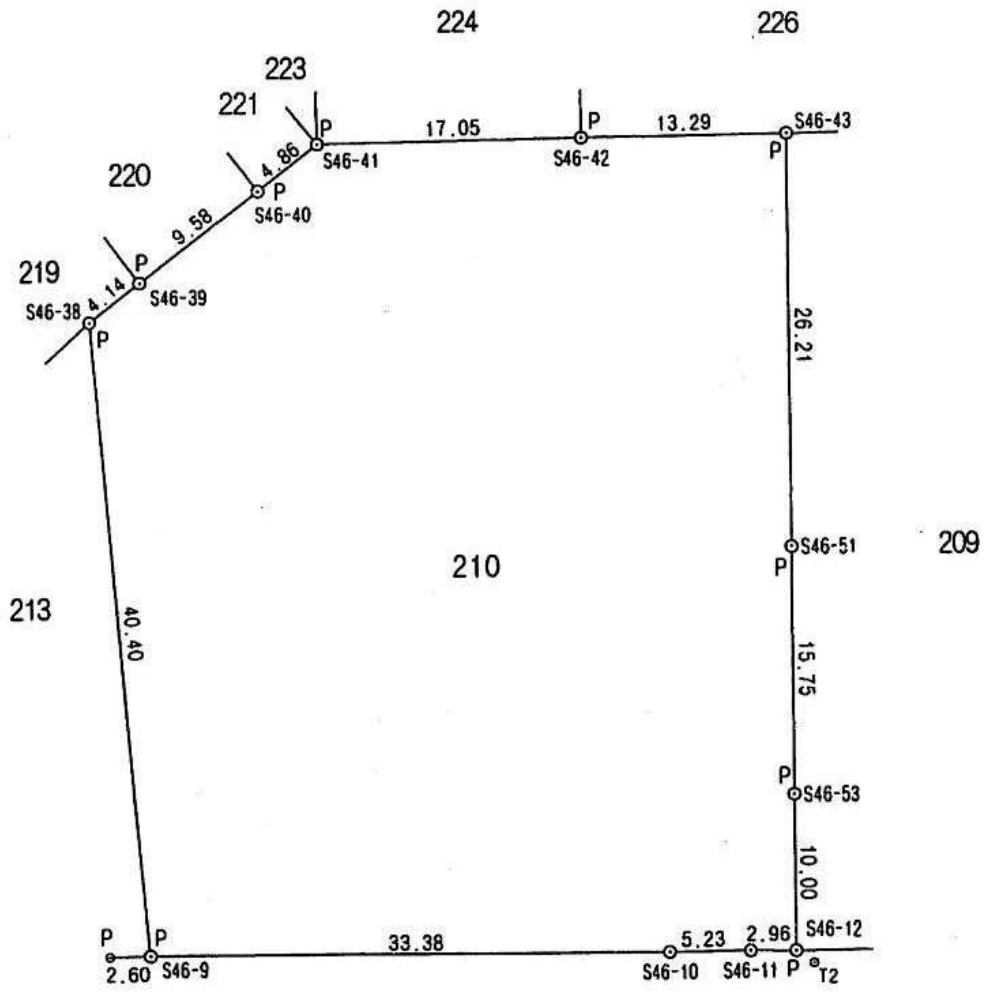


公図 (2号物件)



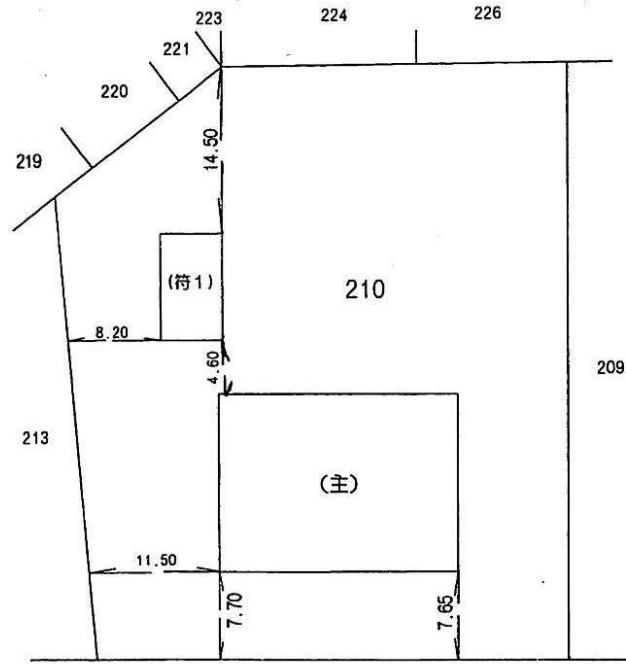
平面図 (2号物件)



道 300-6 路

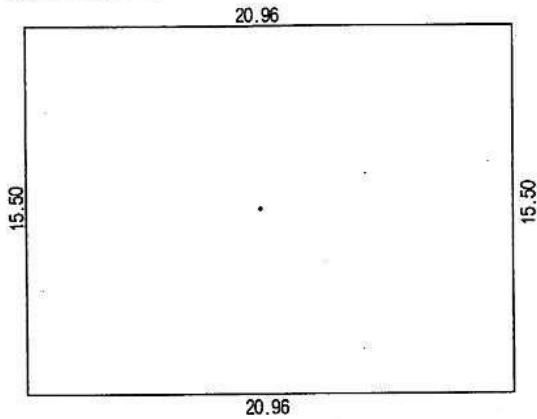
* P=プレート

建物平面図 (2号物件)



道 300-6 路

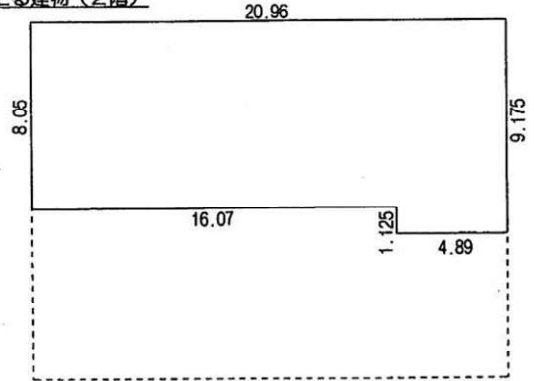
主たる建物 (1階)



求積表

$$\begin{array}{r} 20.96 \times 15.50 = 324.8800 \\ \hline 324.88\text{m}^2 \end{array}$$

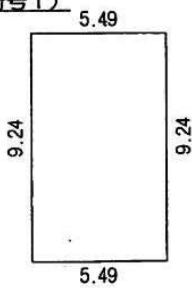
主たる建物 (2階)



求積表

$$\begin{array}{r} 20.96 \times 8.05 = 168.7280 \\ 4.89 \times 1.125 = 5.50125 \\ \hline 174.22925 \\ \hline 174.22\text{m}^2 \end{array}$$

附属建物 (符号1)



求積表

$$\begin{array}{r} 5.49 \times 9.24 = 50.72 \\ \hline 50.72 \end{array}$$