

City development

Pedestrian friendly city

Develop a "pedestrian friendly Kyoto," prioritizing people and public transportation

Basic plan

We will make the switch from our car-reliant life and society to a walking-oriented life and city by promoting the development of "pedestrian friendly city" in cooperation with citizens, local businesses, and government.

Our vision for Kyoto 10 years in the future

- ① The development of "pedestrian friendly Kyoto" is well underway with cooperation from citizens, local businesses, and government.
- ② The development of user-friendly public transportation and new public transportation is well advanced.
- ③ The city has been developed in such a way that citizens consider walking to be the preferred alternative.
- ④ Regulations to reduce the use of cars have been established and the road transport system has been optimized and made efficient.
- ⑤ Subway and buses are playing an important role as a mean of citizen transportation.
- ⑥ The city is cyclist friendly and cyclists are observing the rules of etiquette.

■ Distribution of responsibilities and combined effort of citizens and government



Promoted policies

- ① Modify public transportation to achieve a world class transportation network
- ② Develop a pedestrian friendly city where pedestrian can fully experience the pleasure of walking
- ③ Make a switch to a lifestyle that places a greater emphasis on walking ("Slow Life Kyoto" project)
- ④ Enhance the attraction of the subway service and further utilize the system to develop the city
- ⑤ Promote use of bicycles in a way that satisfy both cyclists and pedestrians



Through proactive initiatives and citizen dialogue, we were able to collect many opinions

We, the Public Comments Unit, were given the mission to "gather public comment on the Master Plan." We first narrowed down our subjects to those who have not made past public comments and with the two themes: "proactive public comments" and "dialogue public comments." We took an active approach in collecting public comments, by the creation of our mascot, "Pabukome-kun," installation of opinion collection boxes in locations throughout the city, as well as directly going out into the city to collect opinions from citizens. Finally, we were able to collect the comments of 322 people for the first draft and 568 people for the second draft. I'm thrilled at the thought of everyone's opinion shaping our future.



Committee member of The Builders of Kyoto/ Youth Conference U35, Public Comments Unit leader
Hisae Sato
(Managing Director of the NPO, Art Plan Maze Maze)

Land utilization and functional city layout

Build an eco-compact* city where each community has attractions and supports sustainable city growth

*Eco-compact city: An energetic and livable city with a diminished impact to the natural environment, achieved through efficient land utilization

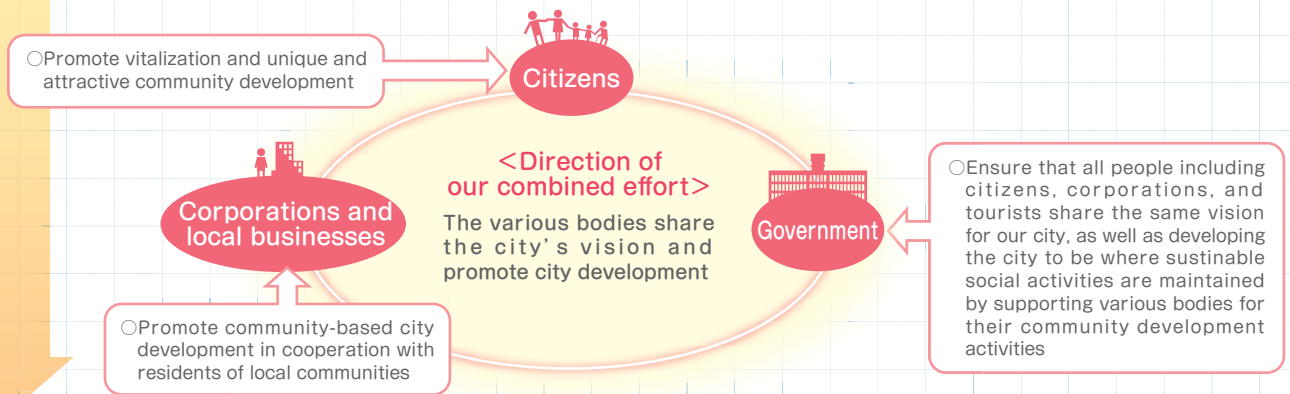
Basic plan

Foreseeing possible changes in society due to a declining population, an aging population combined with a diminishing number of children, and changes required to develop a low-carbon city, we will build a city that sustainably supports various activities and city growth, through effective city management that keeps in mind the city development plan based on *conservation, revitalization, creation*. This will be achieved through colorful, unique and orderly land utilization that makes the most of the characteristics of each community, as well promote a compact urban layout that reduces the impact to the natural environment.

Our vision for Kyoto 10 years in the future

- ① The city has a network of convenient and livable daily living areas.
- ② There are energetic and attractive commercial and business districts.
- ③ The southern region play an important role in the vitalization of Kyoto.
- ④ The creation of a unique and attractive city is achieved.
- ⑤ City development rules and regulations and their oversight have been initiated.

■ Distribution of responsibilities and combined effort of citizens and government



Promoted policies

- ① Develop convenient and livable daily living areas.
- ② Develop a lively city with a strong business and commerce presence.
- ③ Support the southern region's continual evolution.
- ④ Develop unique and attractive communities within the city.
- ⑤ Develop a system that supports community development.

Kyoto's future as depicted by children



City Mayor Award - Sumika Yoshii, Elementary School year 3 to 6 Section

"In the future, all the trains and cars run underground and there will be lots of trees and historical buildings above the ground!"

"Let's build 'eco city, Kyoto' bringing tradition with us!"



City Mayor Award - Kento Ohmura, Junior High School Section

Landscape

Build a city exhibiting its 1200 year history and culture that continues to be globally appealing

Basic plan

Kyoto's characteristics and attractions are derived from its rich history, culture, and beautiful cityscape that exemplify its heritage. We will promote the development of a timeless, picturesque cityscape to enable Kyoto to retain its unique characteristics in 50 and 100 years' time, by refining Kyoto's attractions and values, which typify Japan, through conservation, fostering, and development of Kyoto's outstanding cityscape.

Our vision for Kyoto 10 years in the future

- ① The development of a refined and picturesque cityscape is well underway.
- ② Supported by the strong bonds of communities, the development of a safe and peaceful city is underway.
- ③ The lifestyle in Kyoto's traditional townhouses and buildings, as well as the culture of tradition-based city development, has been inherited and utilized.
- ④ The public spaces within the city are attractive and aesthetically appealing.
- ⑤ The development of green space and waterfronts gives the citizens the chance to enjoy all four seasons.

■ Distribution of responsibilities and combined effort of citizens and government



Promoted policies

- ① Conserve the beauty of nature
- ② Develop a refined cityscape
- ③ Conserve traditional townhouses and Kyoto's historic atmosphere
- ④ Develop aesthetically appealing roads through, for example, removal of utility poles
- ⑤ Promote cityscape development made possible by cooperation of citizens

I experienced a unified and cohesive process that led the development of the city

Through weekly conversations to discuss the method of informing the citizens of this Master Plan and meetings outside the conference, I was able to build a really close friendship with the members of the Youth Conference. I'm thrilled to have new friends. As the leader of Event Organizing Unit, it was not easy bringing together so many members of such diverse personalities, but my efforts were well rewarded, giving me a real sense of fulfillment. I had the privilege of experiencing the process of city development in which the ties between the members gave us cohesion and unity that led to the development of the city, prefecture and country.



A committee member of The Builders of Kyoto/ Youth Conference U35, Event Organizing Unit leader
Kohichi Takeuchi
(KBS Kyoto newscaster)

A message for a combined effort*!

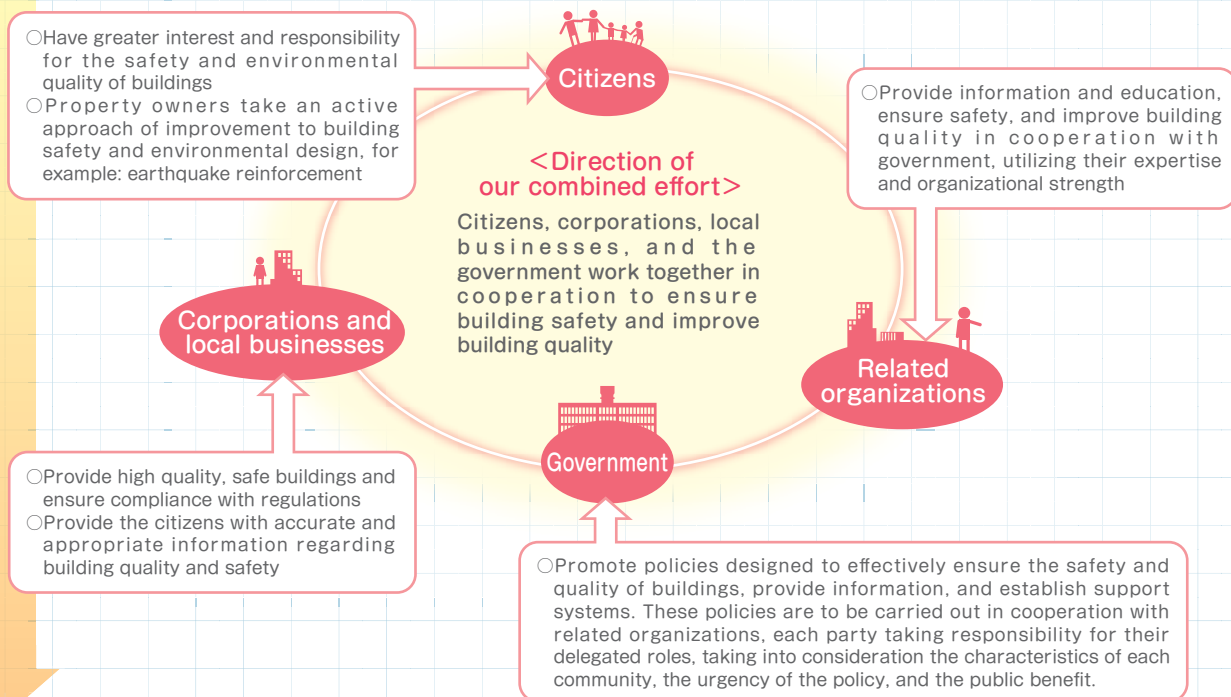
Basic plan

We will protect the citizens from building-related accidents and disasters, building a people-friendly city where the citizens can lead active lives with peace of mind and engage in fulfilling social activities. In addition, we will promote improvements to buildings, both new and existing, that enhance safety, are environmentally friendly, and increase ease of use. Working together, responsibilities will be delegated between citizens and government. Additionally, we will promote appropriate, systematic maintenance and utilization of public buildings that will provide an example to the wider city.

Our vision for Kyoto 10 years in the future

- ① All the new buildings have been inspected and certified for safety.
- ② Buildings are utilized safely and comfortably.
- ③ Damage from earthquakes, fire, and accidents has been reduced.
- ④ The city has well prepared disaster plans.

■ Distribution of responsibilities and combined effort of citizens and government



Promoted policies

- ① Provide safe new buildings
- ② Improve the safety of the existing buildings
- ③ Prepare disaster plans for communities with narrow streets
- ④ Develop easy-to-use, environmentally friendly buildings
- ⑤ Promote pacesetting maintenance of public buildings

Housing

Bonds between people, leading us into the future
Inherit and progress the uniquely Kyoto - style housing and city development

Basic plan

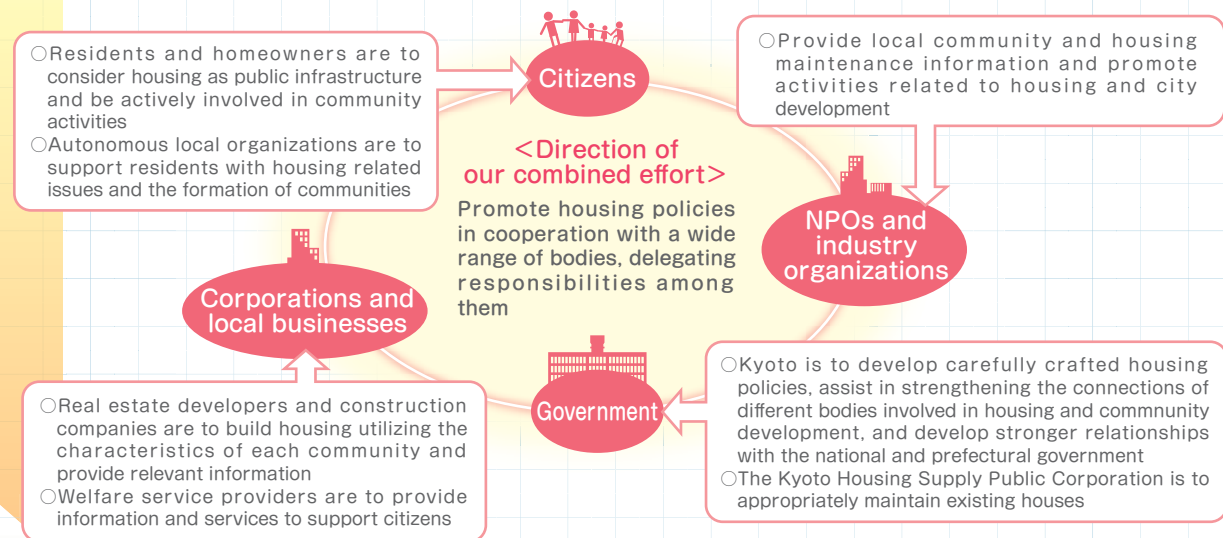
Inherit and develop Kyoto's assets, including the environment, the cityscape, and its communities, and show the vision for housing in Kyoto through the establishment of the identity* of Kyoto, as well as advancing housing-related policies utilizing the function of markets in order to effectively advance the development of disaster-prevention, disaster-reduction, and housing safety nets.

*Identity: Something that characterizes the city.

Our vision for Kyoto 10 years in the future

- ① High quality houses are passed down the generations.
- ② Vitalization of local communities is well advanced.
- ③ Occupancy of existing houses is high.
- ④ Multi-layered safety nets have been established.

■ Distribution of responsibilities and combined effort of citizens and government



Promoted policies

- ① Inherit the uniquely Kyoto way of living
- ② Assist in appropriate maintenance and renewal of housing stock in order to improve its quality
- ③ Provide support in improving the occupancy of existing housing
- ④ Improve the safety of housing and living environments
- ⑤ Establish multi-layered safety nets
- ⑥ Maintain and manage the medium and large-sized city public housing

Small scale activities turn into something big, spreading throughout Kyoto

As a culinary culture and living coordinator, I have been exploring ways to make contributions to the communities through culinary culture. I was inspired to maintain Kyoto's traditional seasonal events and festivals by using traditional arts and crafts and adapting them in a way that best suits our modern lifestyle. I want this to be my life's work, which is why I have sent you my manifesto. Kyoto has evolved by preserving our good old traditions while merging them with modernity. I truly hope that the small-scale activities initiated by those who understand this turn into something big that will spread throughout Kyoto.



A message for a combined effort*!

Roads and greenery

Develop roads and greenery that are in harmony with the natural features and history of the city

Basic plan

We will develop a city where the roads and the greenery are in harmony with the natural beauty and history of a city with a 1000 year history, by improving our infrastructure of roads, bridges, and parks, as well as encouraging the citizens and the government to repair and maintain our assets together, with citizen interest at heart.

Our vision for Kyoto 10 years in the future

- ① A secure and safe arterial road network has been developed.
- ② Comprehensive policies regarding the greenery have been developed.
- ③ Public assets have been well maintained.
- ④ Attractive development of urban space is well underway.

■ Distribution of responsibilities and combined effort of citizens and government



Promoted policies

- ① Enhance the arterial road network
- ② Promote the greenery projects that enable citizens to live in good health
- ③ Maintain and control the infrastructure that supports social capital
- ④ Develop the urban environment in such a way that it vitalizes and enriches the city

A message for a combined effort!



I hope my drawing triggers discussion about the bright vision for Kyoto

I tried to create a simple yet bold picture that instantly conjures vivid images for both adults and children. I hope my drawing gives everyone an opportunity to start conversations about the bright vision for Kyoto.



"Miyako conceptual drawing"
City Mayor Award

Fire and disaster prevention

Develop a “peaceful city, Kyoto” with well-prepared disaster plans where citizens continue to live with peace of mind

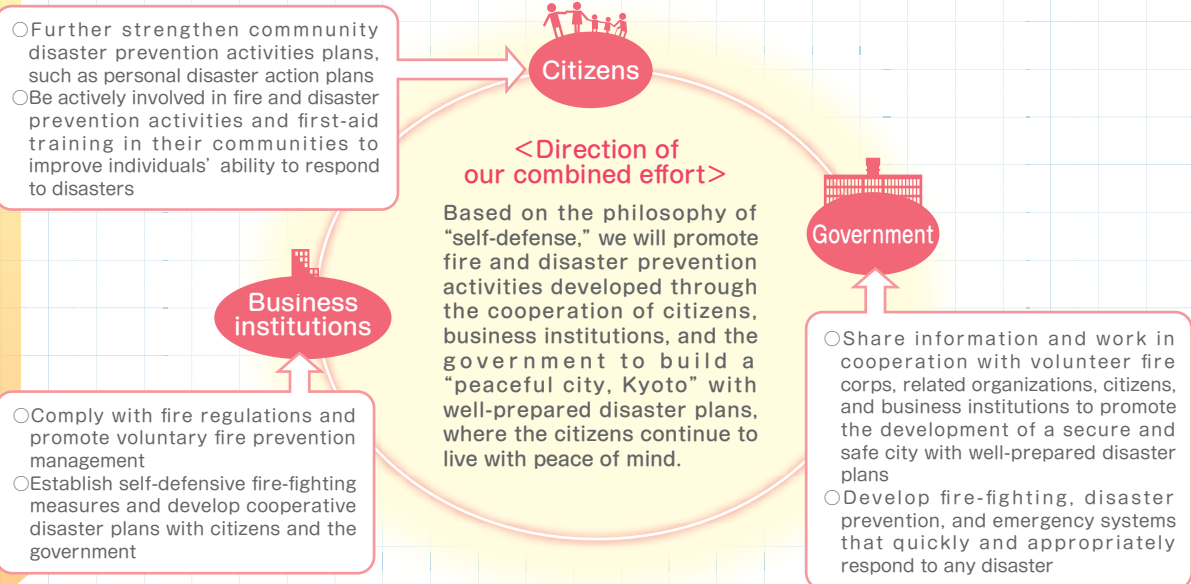
Basic plan

We will combine the strong communities, made up of close-knit citizens, that work together with the government and promote fire and disaster prevention activities. We will also establish fire-fighting, disaster prevention, and emergency systems that quickly and appropriately respond to all disasters. We will build a “peaceful city, Kyoto” where citizens continue to live with peace of mind.

Our vision for Kyoto 10 years in the future

- 1 The number of fires and fire-related deaths has been reduced.
- 2 Fire and disaster prevention plans to protect our valuable cultural assets have been further developed.
- 3 Fire-fighting operations have been improved by the introduction of the latest equipment.
- 4 Through first-aid education and strengthened emergency plans, more lives are being saved.
- 5 Communities have better prepared disaster plans and damage from large-scale disasters is minimized.

■ Distribution of responsibilities and combined effort of citizens and government



Promoted policies

- 1 Promote fire prevention plan development to protect lives, livelihoods, and the property of citizens
- 2 Strengthen fire-fighting systems to minimize damage from disasters
- 3 Improve life-saving effectiveness through the first-aid education of citizens and strengthened emergency plans
- 4 Enhance fire crisis management system by, for example, improving the communities' ability to respond to disasters

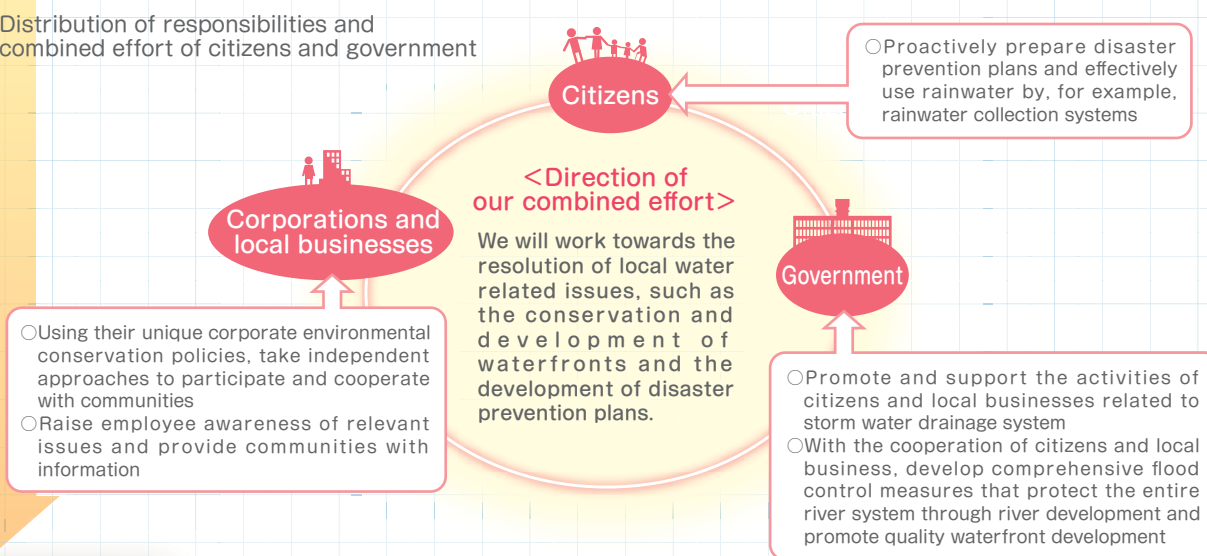
Basic plan

The water, sewage, and river systems are important lifelines for citizens. They form part of the city's infrastructure but are also a part of the wider water eco-system, which includes Lake Biwa and the Yodo River, and as such, they play an important role in the conservation of the health of the basin. We will promote the development of secure and safe water systems that consistently provide high-quality drinking water, sewage systems that protect the city from floods, and ensure comfort and hygiene, as well as flood-control plans. In addition, we will encourage the development of waterfronts that gives citizens opportunities to enjoy water. The plan will see sustainable improvements and enhancements to "running water" which future generations will enjoy.

Our vision for Kyoto 10 years in the future

- ① Secure and safe water and sewage systems with low environmental impact, as well as popular and safe waterfronts have been developed.
- ② Improvements to water supply services and sewage systems have been undertaken.
- ③ The financial base of water supply and sewage system service providers has been strengthened and their business operations are stable.
- ④ The number of floods has been reduced significantly, and the city has developed beautiful cityscapes.
- ⑤ The citizens have higher water awareness.

■ Distribution of responsibilities and combined effort of citizens and government



Promoted policies

- ① Develop safe and secure water and sewage systems
- ② Develop water and sewage systems with reduced environmental impact
- ③ Maintain and improve the services of the water and sewage systems
- ④ Provide water and sewage services that meet the needs of the citizens
- ⑤ Strengthen and stabilize the business foundation of water and sewage providers
- ⑥ Develop waterfronts
- ⑦ Advance activities designed to promote symbiosis with water*

*Activities designed to promote symbiosis with water: Activities based on the principles of "living together with water" that are designed to resolve water-related issues, through for example, the development and maintenance of waterfronts and sewage systems, or installation of rainwater tanks and underground storage systems.