

Wellbeing

Parental care support

Develop a city where citizens and communities as a whole nurture our children

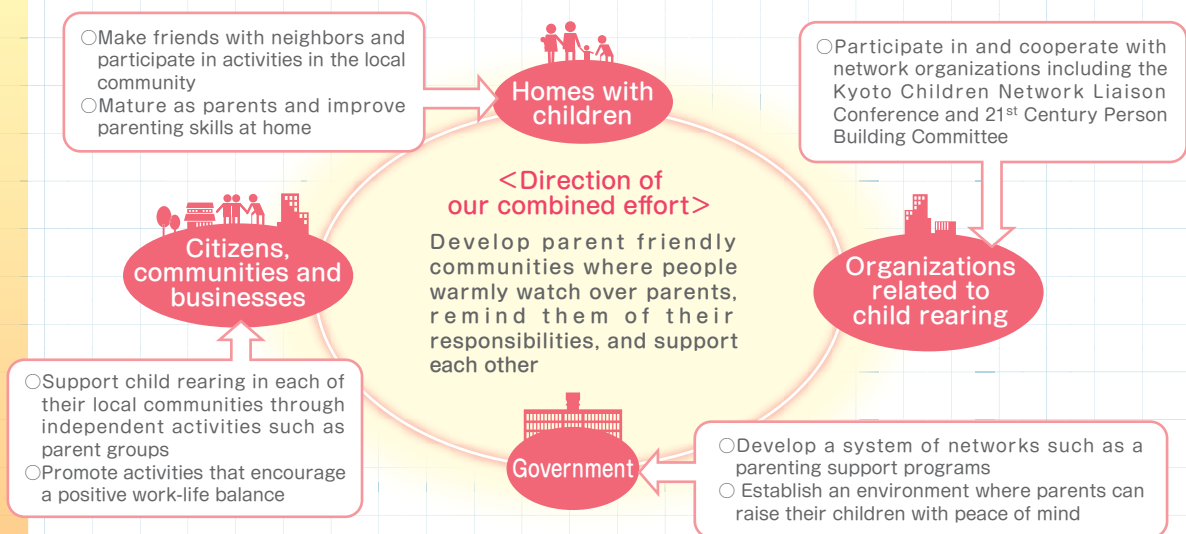
Basic plan

Children are precious to society. Thus we will propagate the principles of the “Kyoto Citizens' Charter for Nurturing Children Together” and put these principles into action in every aspect of our social life. We will establish an environment where citizens and communities as a whole support each other in raising our children, develop a city where citizens feel a real sense of joy in having and bringing up children, and where children can say “I am glad to grow up in Kyoto”

Our vision for Kyoto 10 years in the future

- ① The whole community looks after and supports children and parents
- ② The lives of children and human rights are protected
- ③ Parents are able to have and raise children in good health with peace of mind
- ④ The city allows parents to balance work and parenting

■ Distribution of responsibilities and combined effort of citizens and government



Promoted policies

- ① Develop an environment where citizens and communities as a whole support child rearing
- ② Develop a city where children's lives and human rights are protected
- ③ Develop a city that supports all families raising the next generation
- ④ Develop a city where parents can have and raise children in good health with peace of mind
- ⑤ Establish an environment appropriate for the healthy development of children and provide after school care programs

Welfare for the disabled

Build a city where all the people, whether able-bodied or otherwise, acknowledge differences and support each other

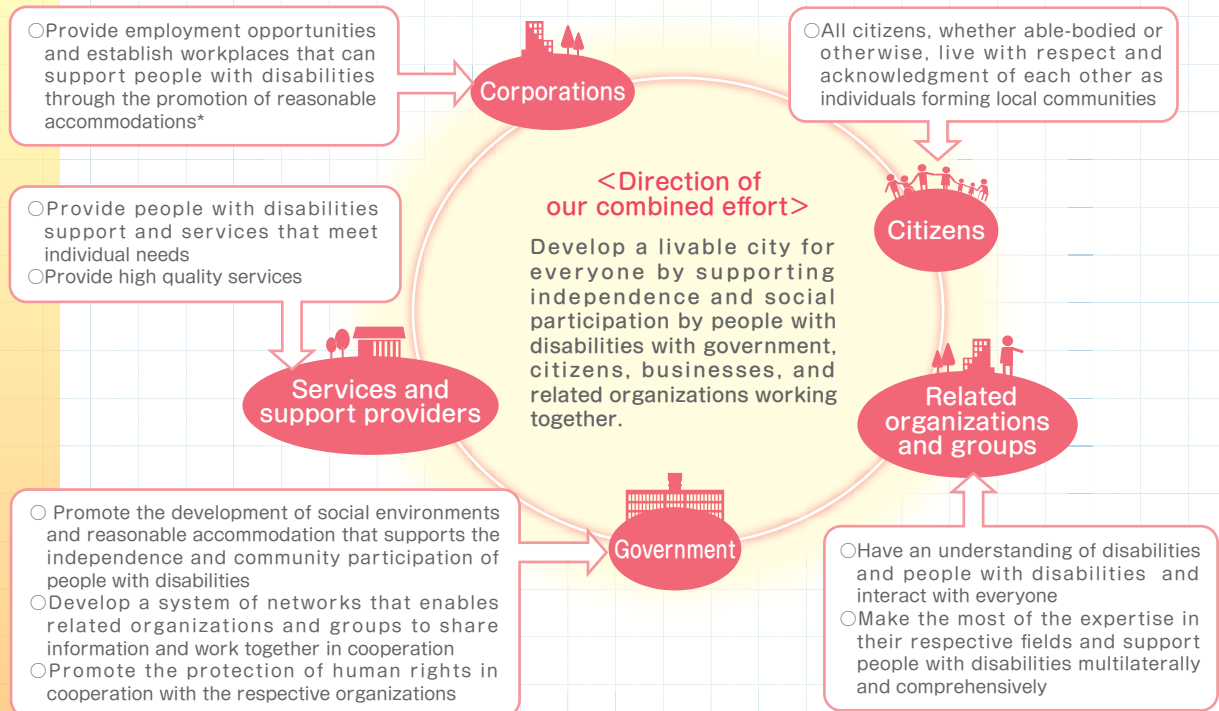
Basic plan

We will aim to make steady progress in the development of welfare policies for people with disabilities in order to ensure that they can lead independent lives and participate in the activities of our society. Through this, we will build a city where all the citizens, whether able-bodied or otherwise, are greatly respected as individuals, actively participate in the community, and acknowledge and support each other, living with peace of mind.

Our vision for Kyoto 10 years in the future

- ① The city has developed in such a way that it encourages citizens to acknowledge and support each other
- ② People with disabilities are able to lead independent lives within the greater community
- ③ People with disabilities who wish to work are able to find fulfillment through employment
- ④ The city has developed in such a way that it is livable for everyone.

■ Distribution of responsibilities and combined effort of citizens and government



*Reasonable accommodations: Alterations and adjustments required to ensure that the rights and fundamental freedoms of the disabled are on an equal footing with those who are without disability, as well as being designed to reduce the burden of people with disabilities. (Example; Braille panel for the visually impaired, fire alarms with blinking lights for the hearing impaired etc.)

Promoted policies

- ① Build a city where citizens acknowledge and support each other
- ② Promote the full social participation of people with disabilities
- ③ Build a society where people work with a sense of fulfillment
- ④ Establish a livable social environment

Community welfare and services

Achieve independence through autonomy and the cooperation of community members and strengthen and enhance the effectiveness of community welfare

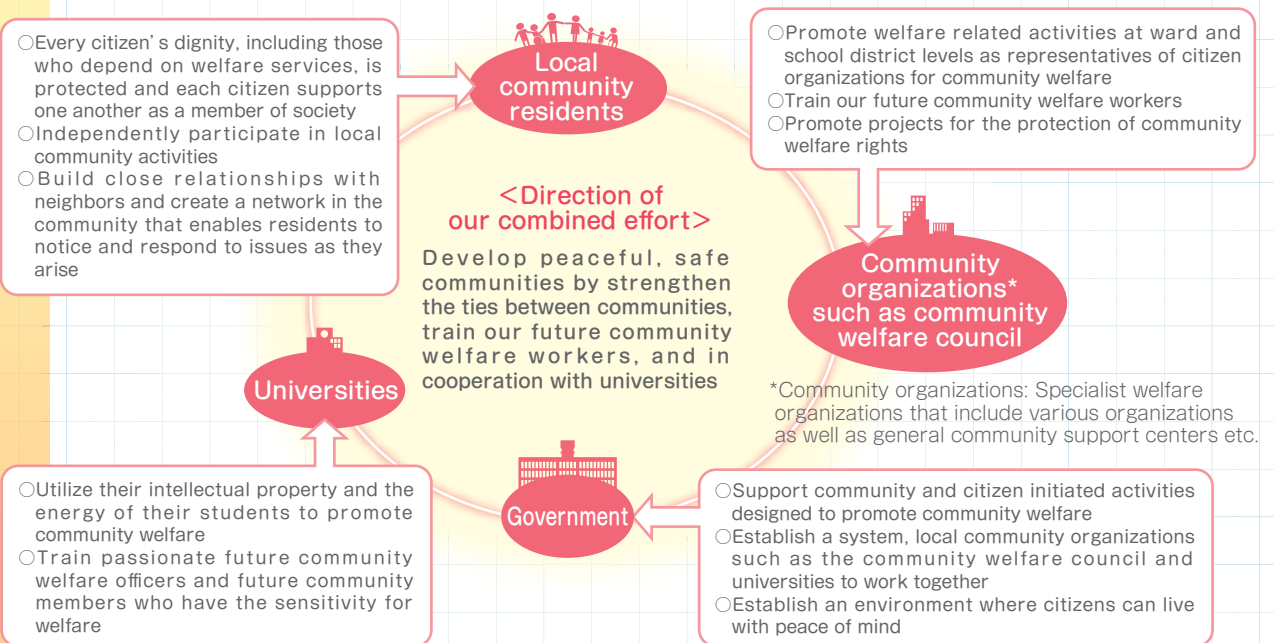
Basic plan

Through the encouragement of citizens to be actively involved in community welfare programs we aim to increase autonomy community. We also aim to have citizens lead independent lives based on their own decisions by working closely with government and public organizations that provide welfare services. Using this as the driving force, we will strengthen and enhance the effectiveness of community welfare programs and build livable communities where each citizen's fundamental human rights are protected.

Our vision for Kyoto 10 years in the future

- ① The dignity of socially disadvantaged people is protected and they are supported by communities as equal members of society
- ② Connections and bonds between communities have been strengthened
- ③ Activities utilizing the characteristics of each community, designed to support each other, have become commonplace
- ④ Citizens are supporting and building their own communities with their own hands

■ Distribution of responsibilities and combined effort of citizens and government



Promoted policies

- ① Understand the needs of welfare in different communities
- ② Establish strong resident relationships within communities
- ③ Promote teamwork and cooperation of related individuals
- ④ Develop a peaceful and safe city achieved through community welfare

Welfare for the elderly

Every citizen participating to build "Kyoto: a city of health and longevity"

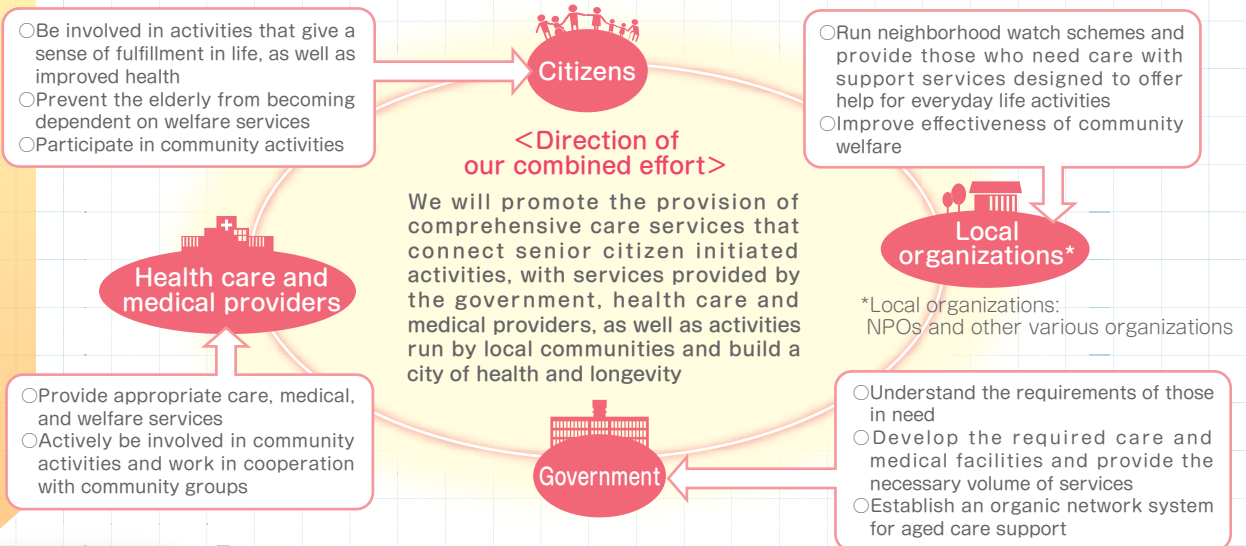
Basic plan

As the so-called first "post war baby boomers" are becoming senior citizens, a consequential increase in the fiscal demands of aged care benefits is expected. We aim to build a city full of vitality by encouraging senior citizens to find a sense of fulfillment through work and participation in society, as well as promoting good health. In addition we will enhance aged care and medical facilities to enable those who need care to remain in familiar communities, as well as establish a citizen based network of elderly protection and promote a structure that uses the entire community to support the elderly.

Our vision for Kyoto 10 years in the future

- ① The dignity of the elderly is respected and they lead emotionally and physically healthy lives
- ② The goal of developing an energetic society of longevity is achieved by making the most of the wisdom, experience, and skills of the elderly
- ③ The network that supports the elderly is being developed and they are able to live with peace of mind
- ④ Various aged care services are readily accessible and the elderly are able to live life to the full
- ⑤ Working conditions in aged care have been improved and caregivers work with a sense of fulfillment

■ Distribution of responsibilities and combined effort of citizens and government



Promoted policies

- ① Develop a city where the dignity of the elderly is respected
- ② Develop an energetic society of longevity
- ③ Promote the establishment of a network to support senior citizens
- ④ Achieve the development of an enriched city with improved aged care services
- ⑤ Development of an attractive workplace environment in the aged care industry

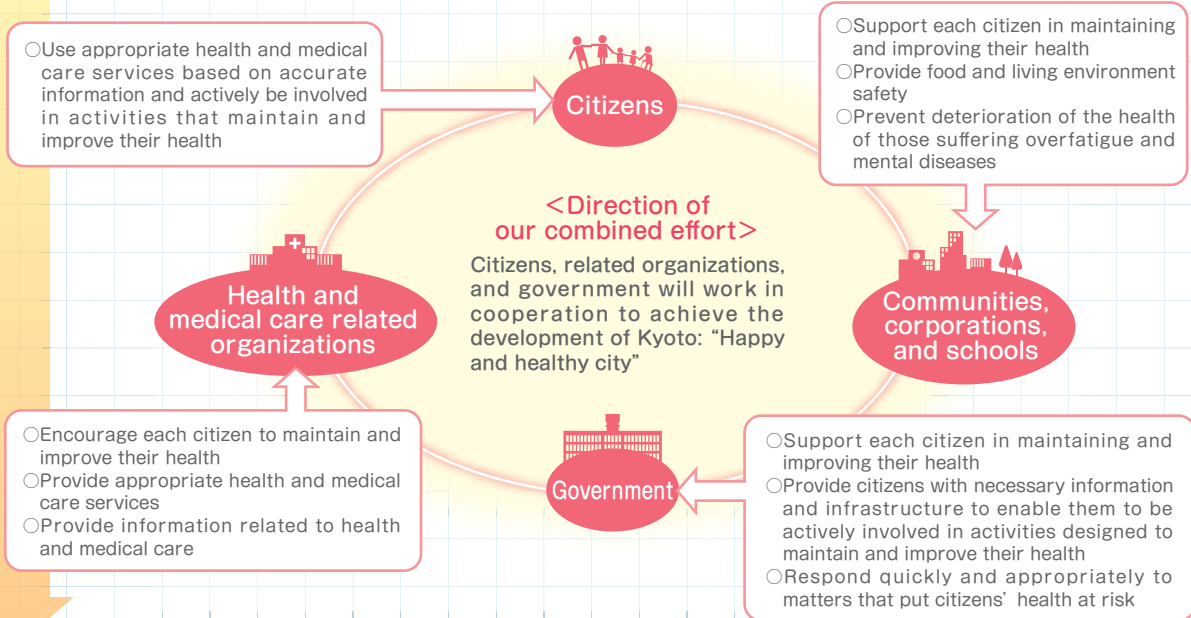
Basic plan

We will establish an environment enabling citizens to live in good health and proactively look after their emotional and physical health, as well as raising awareness of health issues. In addition, we will establish a system enabling the citizens to receive necessary health and medical care, as well as encouraging citizens to be engaged in activities designed to maintain and improve their health. Additionally we will establish a system that enables us to respond quickly and appropriately to matters that put citizens’ health at risk, such as outbreaks of infectious diseases.

Our vision for Kyoto 10 years in the future

- ① All citizens are engaged in activities designed to maintain and improve their health and are living with dignity.
- ② Health and medical care service is readily accessible.
- ③ Food and living environment safety, as well as security are guaranteed.
- ④ Safety and security of citizens for health crises are guaranteed.

■ Distribution of responsibilities and combined effort of citizens and government



Promoted policies

- ① Promote activities designed to maintain and improve citizens’ health
- ② Enhance health and medical care services
- ③ Ensure the safety and security of food and the living environment
- ④ Ensure safety and security of matters that put citizens’ health at risk

Formal Education

Equip our children with "life skills" in cooperation with all citizens

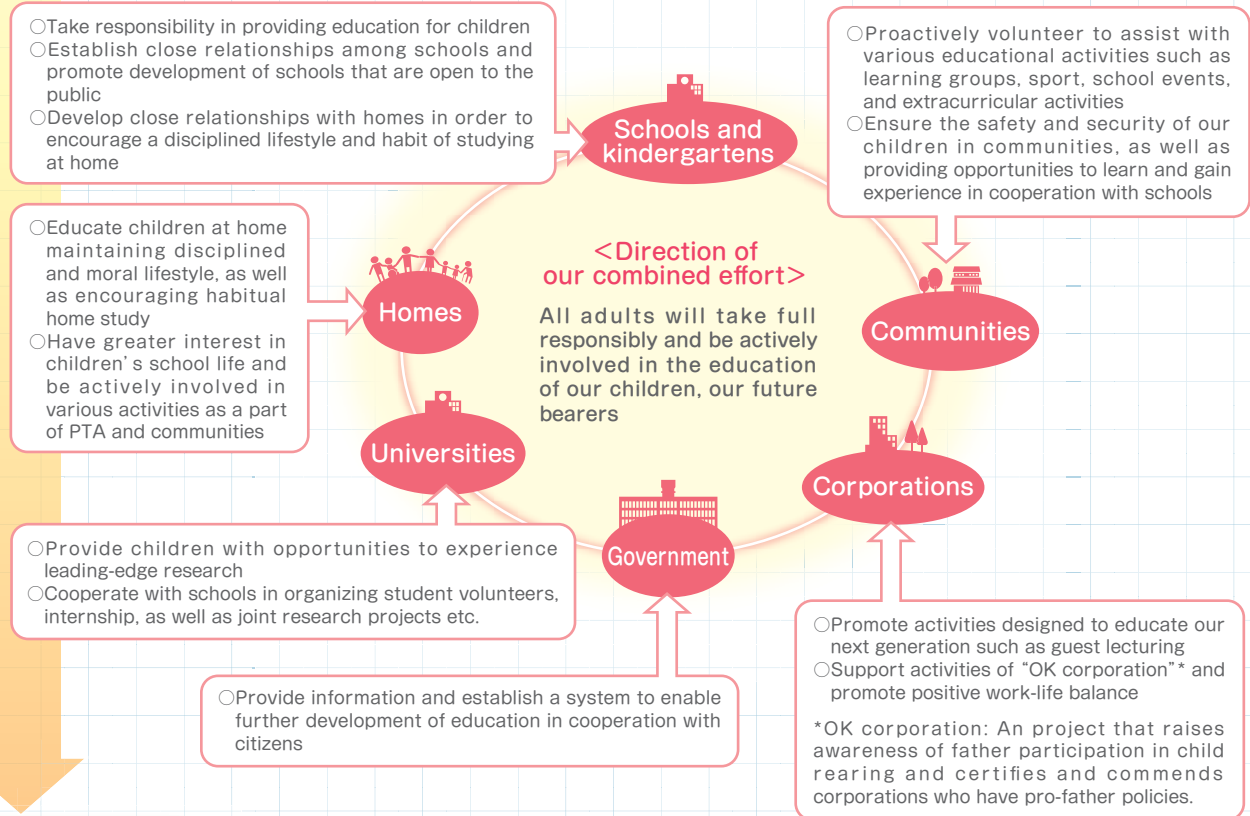
Basic plan

Regardless of socio-economic circumstances, we will promote education that equips our children with "life skills", using Kyoto city's educational principles to "*wholeheartedly care for each child*" in the hope that the children nurtured in Kyoto will value life and be able to dream and hope for a bright future, encouraging homes, communities, universities, industries, and NPOs to work together to achieve this goal.

Our vision for Kyoto 10 years in the future

- 1 The community as a whole nurtures our children, society's most valued treasure.
- 2 With children's interests at heart, teachers and parents have strong relationships.
- 3 The communities give various opportunities for our children to learn and gain experience.
- 4 Children nurtured in Kyoto are playing crucial roles in many fields.

■ Distribution of responsibilities and combined effort of citizens and government



Promoted policies

- 1 Promote education that is managed by all citizens
- 2 Promote education that equips our children with "life skills"
- 3 Improve teacher quality and their ability to lead and guide children
- 4 Establish new learning environments

Continued learning

The whole city is our school, developing a city where both adults and children learn and grow

Basic plan

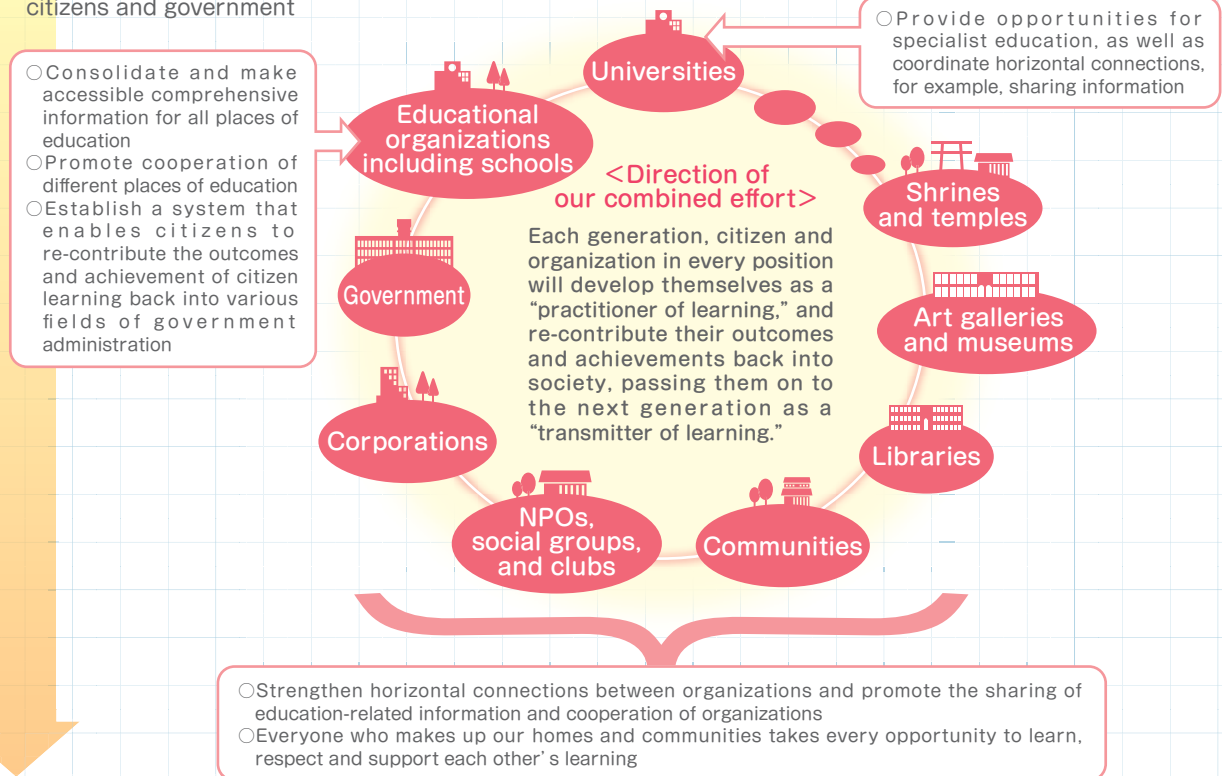
With the philosophy that “enriched life is inseparable from learning”, we will develop a society where every citizen, from children to adults and the elderly, can experience the joy of learning, continued self-develop, and making contributions to building society by making the whole city our school, utilizing Kyoto’s unique strengths of community, culture, and humanity.

In addition, in cooperation with citizens, we will promote activities that put into action the principles of Kyoto Citizens' Charter for Nurturing Children Together, in order to nurture our next generation.

Our vision for Kyoto 10 years in the future

- ① Citizens have opportunities to learn in various places within the city.
- ② The city is developed in such a way that the knowledge of citizens is utilized.
- ③ Knowledge has been passed on to the next generation.
- ④ Actions based on the principles of “Kyoto Citizens' Charter for Nurturing Children Together” are practiced.

■ Distribution of responsibilities and combined effort of citizens and government



Promoted policies

- ① Enhance the “network of learning” so that any citizen can participate
- ② Establish a system that enables the outcomes and achievements of learning to be re-contributed back into society
- ③ Develop a culture of raising children together