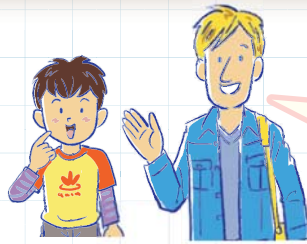


Policy Structure

“What is Policy Structure?”



“There are a number of policies that Kyoto city will follow and ‘Policy Structure’ is the way we have categorized and organized the individual policies. These policies will lead the way in building the city.”

Enriching

Environment

“Do you Kyoto (“do you do something good for the environment?”) is the motto and we aim to become an “environmentally friendly city” where citizens genuinely care for the environment.

Basic plan

We will promote Kyoto’s unique advantages of rich forest resources, culture, enterprising spirit, and creativity, focusing the energy of its citizen and communities on the goal of becoming an “environmentally friendly city” where everyone genuinely cares for the environment.

Our vision for Kyoto 10 years in the future

- ① Children value and appreciate the importance of our valuable environment
- ② The environment remains healthy and blessing everyone
- ③ The plan to develop a “low-carbon city” is promoted and undertaken
- ④ Development of green technology and effective use of renewable energy is well advanced
- ⑤ “Kyoto’s way of life” is deeply engrained
- ⑥ Waste reducing lifestyles and business practices are widespread
- ⑦ Everyone is involved in thorough recycling

■ Distribution of responsibilities and combined effort of citizens and government

- Re-evaluate business operations and make environmentally friendly improvements
- Promote research and development of environmentally friendly business practices

Business

- Kyoto city, Kyoto prefectural government and the national government working together to support and create a structure to enable citizens and businesses to be involved in everyday activities that help the environment

Government

<Direction of our combined effort>

Each of us plays our own part at home, in the community and society to build an environmentally friendly city through a network of people

Citizens
(including people that commute to work and school from outside of Kyoto City, and tourists),
community groups

- Re-evaluate their own lifestyles, in consideration of “Kyoto’s values” which have been fostered over many years
- Do something good for the environment at home and the work place starting from things in your everyday life

Promoted policies

- ① Environmental conservation
- ② Become a low carbon city that encourages environmentally friendly lifestyles
- ③ Create a resource-circulating city that reduces waste production

Human rights and gender equality

We aim to build a society where everyone is respected

Basic plan

In our changing society with a declining birth-rate, aging population and changes in economic and employment circumstances, we aim to build a society where diverse opinions and life-style choices are accepted, everyone can use their individuality and abilities to their full potential, each of us is mutually respected in our everyday interactions with one another and richer human relationships are fostered.

Our vision for Kyoto 10 years in the future

- 1 We acknowledge and accept each other's differences and richer relationships are fostered
- 2 Every citizen has places and opportunities to be actively involved
- 3 Citizens have a positive work-life balance
- 4 Violence against women is eradicated and women live with peace of mind

■ Distribution of responsibilities and combined effort of citizens and government

- Learn and consider and actively respond to human rights
- Know, support, and understand each other
- Develop a greater understanding of gender equality

Citizens

<Direction of our combined effort>

Mutually acknowledge and respect one another each day, as each of us plays our part while working jointly toward the goal of building a city where rich human relationships are fostered

Community groups and local businesses

- Promote human rights policies, offer counseling services, and protect at risk people in cooperation with various organizations
- Promote a comprehensive policy of culture of human rights and support citizen and local business' pro-human rights activities
- Promote overall gender equality policies

Government

- Promote organizations to initiate their own pro-human rights activities
- Use their expertise to contribute to the promotion of human rights

Promoted policies

- 1 Build a culture of human rights where every individual's rights are respected
- 2 Encourage activities that put the principles of human rights protection into action
- 3 Promote activities that create places and opportunities for all citizens to be actively involved
- 4 Promote the culture of a positive work-life balance
- 5 Eradicate all kinds of violence against women

A message for a combined effort*!

Developing "our Kyoto" with our own hands

This master plan is a compass directing the building of our city, encompassing Kyoto's appearance, business and its people's way of life. We must make the switch to a low-carbon society under global regulations for carbon emissions; our lives filled with the knowledge, beauty and spirit of sharing. Only when those who love Kyoto work hand in hand to develop "our Kyoto" for ourselves, our children and for children all over the world, can we set the example as a successful self-governing city.



Kyoto City Master Plan Committee Vice President
Mie Asaoka
(Managing director of NPO Kiko Network and lawyer)

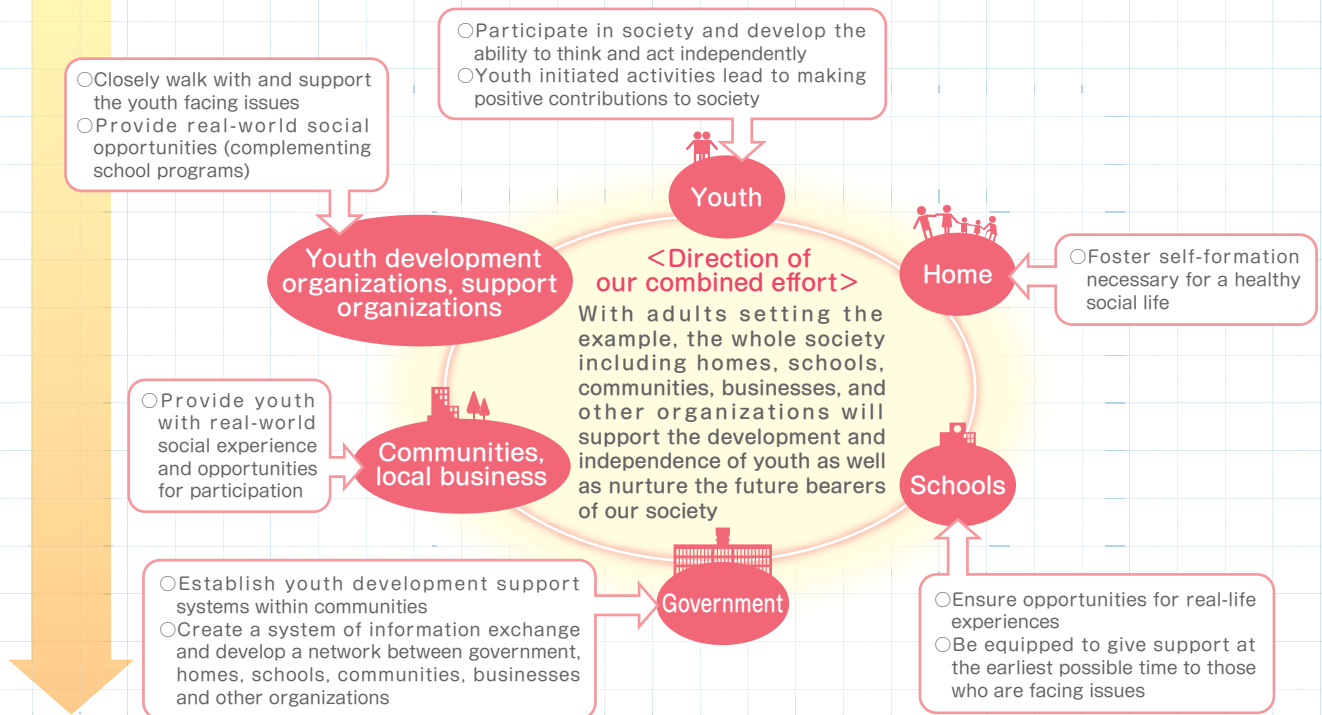
Basic plan

We will provide youth with opportunities to experience and participate in society, help them to develop and become independent adults who can think and act for themselves as valuable members of our community, and encourage them to take the initiative, while promoting the development of community based youth support programs.

Our vision for Kyoto 10 years in the future

- ① Our youth are equipped with “life skills”
- ② Our youth are designing their own lives and future plans
- ③ We make the most of our youth’s abilities
- ④ Support services for youth facing issues are readily accessible
- ⑤ The social environment is youth inclusive, and supports their development

■ Distribution of responsibilities and combined effort of citizens and government



Promoted policies

- ① Encourage independently initiated activities by youth
- ② Promote comprehensive support for youth facing issues
- ③ Create an environment to support the development of our youth

Civic life and community

Build a close-knit livable city through the cooperation of everyone in communities where citizens genuinely care for each other

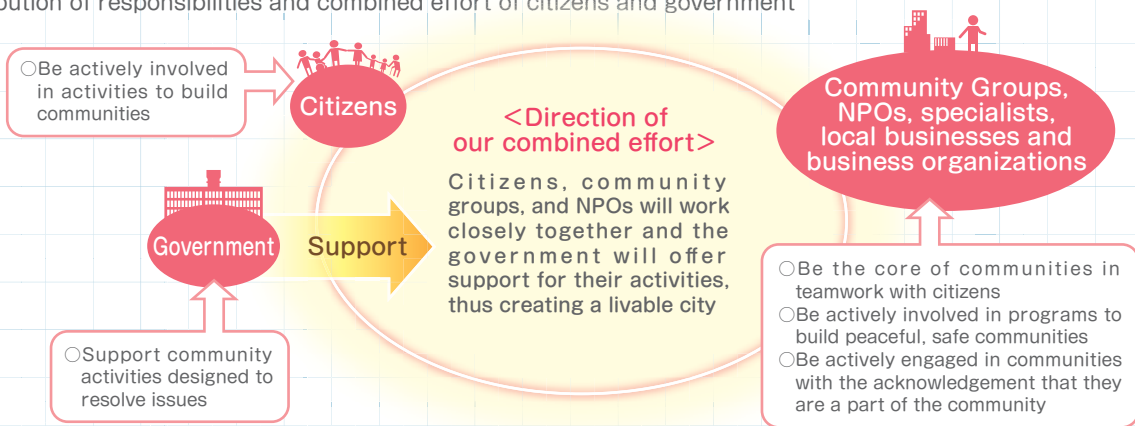
Basic plan

In order to solve the issues of civic life, we will vitalize local communities, one of the greatest social assets of Kyoto, encouraging the citizens to show initiative in solving these issues. In partnership with citizens the government will offer support to develop a livable city.

Our vision for Kyoto 10 years in the future

- ① The social environment is inclusive, and everyone can lead their lives with peace of mind
- ② There are diverse communities that are able to independently resolve their issues
- ③ Communities have a good understanding of their issues and are working towards resolution
- ④ Partnerships between local communities and government are strengthened
- ⑤ Social movement organizations of various interests are working closely with local communities

■ Distribution of responsibilities and combined effort of citizens and government



Promoted policies

- ① Develop lively local communities
- ② Vitalize all social movement organizations
- ③ Build new partnerships between local communities and the city of Kyoto



Fusion is the key to gaining public approval and combined effort

The keyword is “fusion”. Kyoto’s challenge in developing a low-carbon city, as well as resolving other issues in a city with a declining population and birth rate, aging society, and slow economic growth, is to fuse the vertically-segmented administration and departments horizontally. Public comments from citizens have inspired us to have various fields work in collaboration; committee members from various policy fields have begun to share information, understand each other, and work together. As a result of “fusion” with the Youth Conference, the ambition of work-life balance was brought into the spotlight. Fusion is the key to gaining public approval and combined effort; Kyoto will change.



Kyoto City Master Plan Committee Vice President
Yoshifumi Muneta

(Associate professor at Graduate School of Life and Environmental Sciences (specializing in Environmental Sciences) at Kyoto Prefectural University)

Secure civic life

Develop a city where communities support each other and its citizens live with peace of mind

Basic plan

We will build a city where citizens are independent and live with peace of mind by vitalizing local communities, prevent crime and accidents, address consumer problems and provide the necessary information and support through the cooperation of related organizations.

Our vision for Kyoto 10 years in the future

- 1 Citizens support each other
- 2 The city is peaceful and safe with fewer traffic accidents and a lower crime rate
- 3 Preventative measures against consumer problems are in place and the protection system is readily accessible
- 4 Consumers are educated and independent

■ Distribution of responsibilities and combined effort of citizens and government

- Be actively involved in local community activities such as community development
- Heighten awareness of self-reliance
- Develop a better understanding and knowledge of consumer rights and become independent consumers who can make rational choices

Citizens

<Direction of our combined effort>

The citizens shall have greater awareness of their safety and security, and the government and experts shall respond and address issues, with consideration for local characteristics, in order to build peaceful, safe, and mutually supportive communities.

Community Groups, NPOs, specialists, local businesses and business organizations

- Support community activities designed to resolve issues
- Promote consumer rights policies such as counter and preventative measures for consumer problems

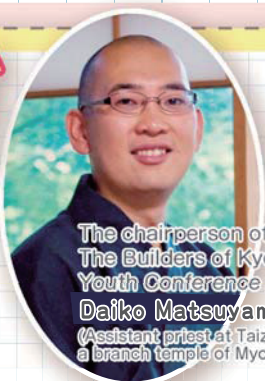
Government

- Be the core of communities in teamwork with citizens
- Be actively involved in programs to build peaceful and safe communities
- Be actively engaged in communities and acknowledge that they are a part of the community
- Cooperate in the promotion of consumer rights policies and contribute to helping consumers become independent

Promoted policies

- 1 Promote safe living (crime and accident prevention)
- 2 Promote peace and safety of consumers' lives and support their independence

A message for a combined effort*!



The chairperson of The Builders of Kyoto/Youth Conference U35
Daiko Matsuyama
 (Assistant priest at Taizoin, a branch temple of Myoshinji Tem)

The time we spent together is a valuable treasure

Various activities, events, and proposals for ideas such as a work-life balance and encouragement of public comments, run by Builders of Kyoto/Youth Conference U35, have been the driving force of the combined effort plan.

The members of the Youth Conference have spent a lot of time and effort working towards our goals but we have been able to experience a real sense of fulfillment. The time we spent together is a valuable treasure. I would like to make this circle of friendship last throughout my life.

“genuine The force of d effort real treasure. I life.

Basic plan

We will promote cultural art and city development that compliments each other; cultural art will thrive in everyday life, helping people to develop an appreciation for its value and producing an energy and prosperity leading to a vitalized city. We will build an internationally recognized cultural arts city filled with attractions.

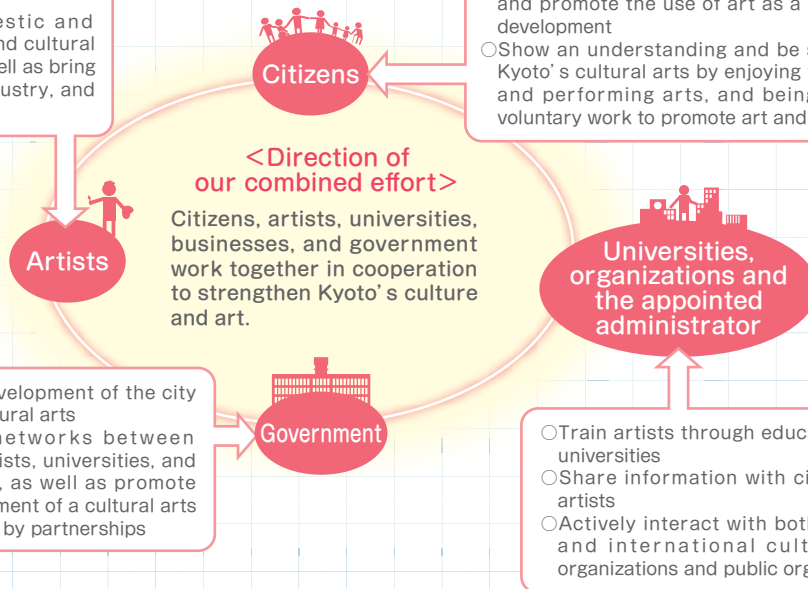
Our vision for Kyoto 10 years in the future

- ① Cultural art activities are prosperous
- ② Cultural art has become a part of citizen's everyday lives
- ③ Society is vitalized by cultural art
- ④ Cultural assets are conserved by the community and lead to a vitalized society

■ Distribution of responsibilities and combined effort of citizens and government

- Pass down traditions, create cultural art, and share them with the public
- Interact with domestic and international artists and cultural art organizations, as well as bring new energy to art, industry, and city development

- Take opportunities to appreciate culture and art and promote the use of art as a means of city development
- Show an understanding and be supportive of Kyoto's cultural arts by enjoying traditional art and performing arts, and being involved in voluntary work to promote art and culture



Promoted policies

- ① Every citizen will support the city of Kyoto in developing a city that produces cultural art of which we can be proud
- ② Pass down the Japanese culture fostered throughout our history and support creative activities
- ③ Improve the environment of cultural arts including international exchange
- ④ Conserve, utilize, and pass down our valuable cultural assets

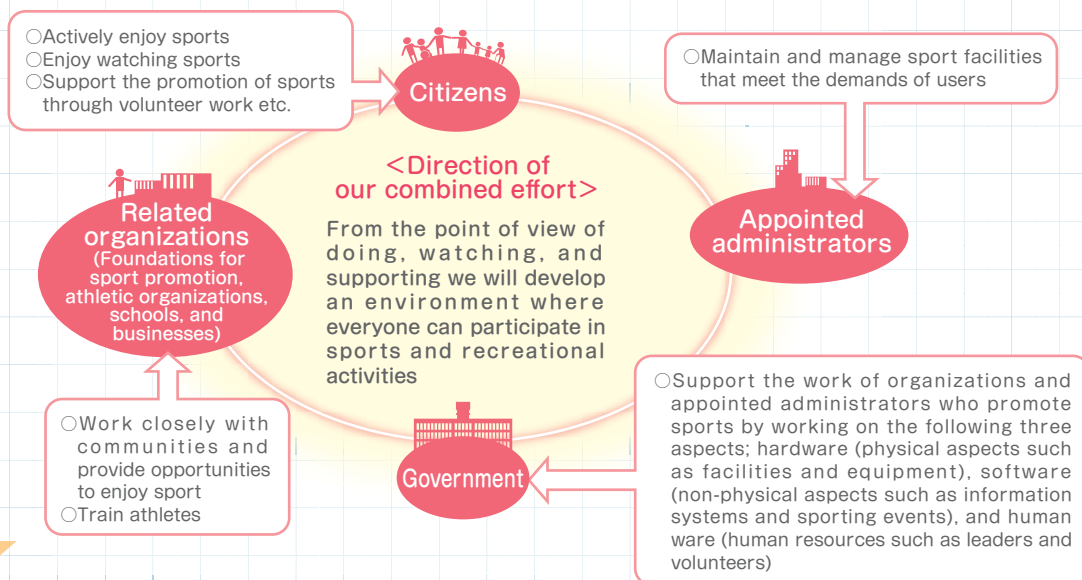
Basic plan

Related organizations (local sport clubs, athletic organizations, schools and businesses) and the appointed administrators and government will promote, as one, the idea of “building a city where anyone can be involved in sports and recreational activities anytime, anywhere, in many ways”. By doing so, we hope that citizens will have the opportunity to enjoy sport and recreational activities, and that their lives will be enriched through good physical and emotional health benefits, as well as bringing benefits to various aspects of city development including the environment, education, tourism, and the economy.

Our vision for Kyoto 10 years in the future

- ① Citizens enjoy sports appropriate to their age, personality, and environment
- ② Have opportunities to experience professional level sport
- ③ Citizens have strong relationships with each other that support sporting activities

■ Distribution of responsibilities and combined effort of citizens and government



Promoted policies

- ① Develop a city where citizens can participate in sport and recreational activities appropriate for their age, personality and environment (“participation sports”)
- ② Develop a city where citizens can experience professional level sport (“spectator sports”)
- ③ Develop a city where citizens support sports activities (“supporting sports”)