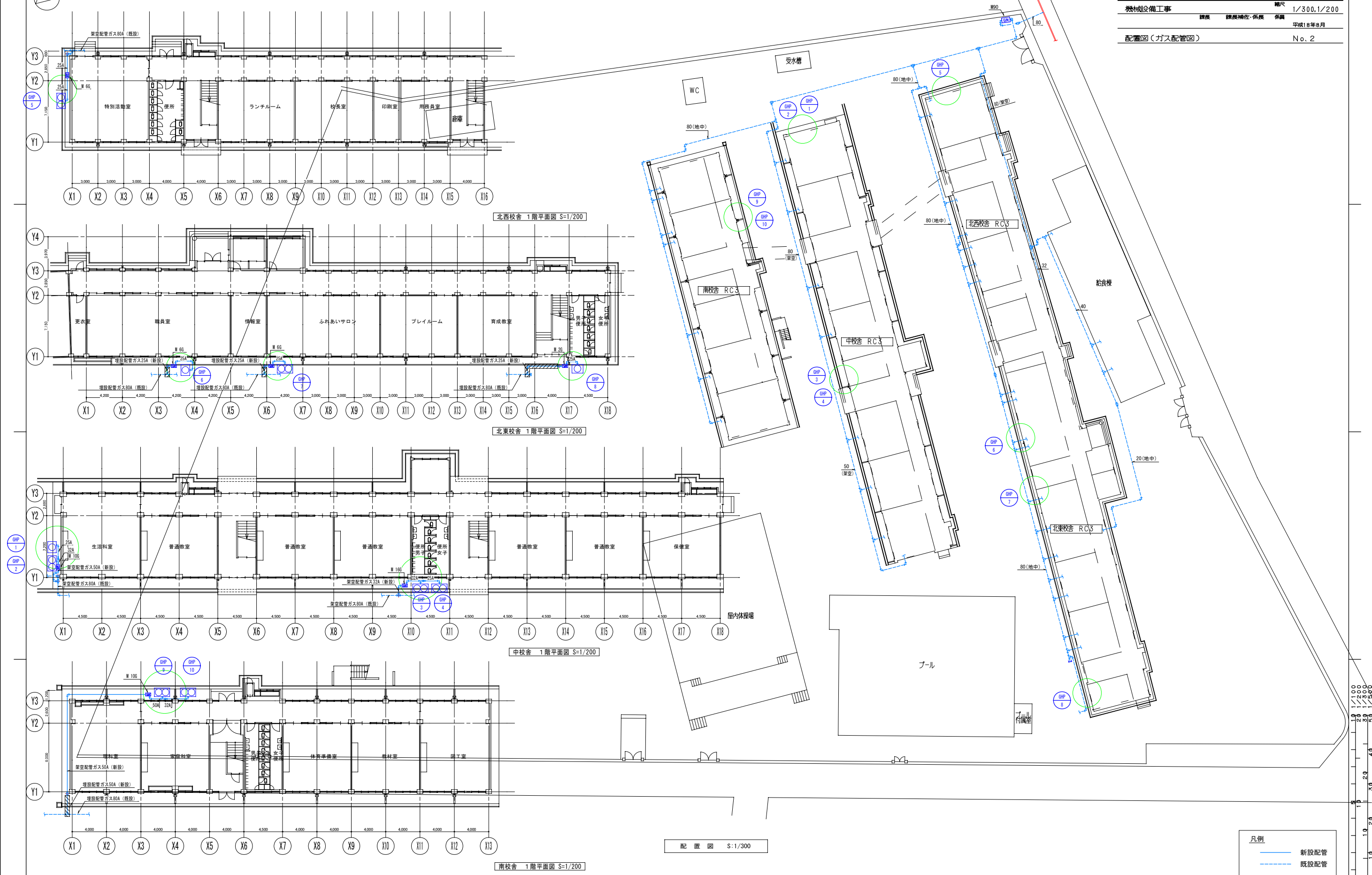


【京都市立小中学校耐震化PFI事業】

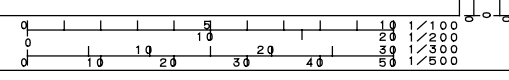
要求水準書 資料3 PFIエアコンの位置図 (太秦小学校)

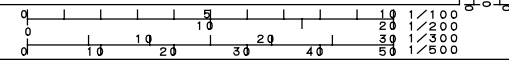
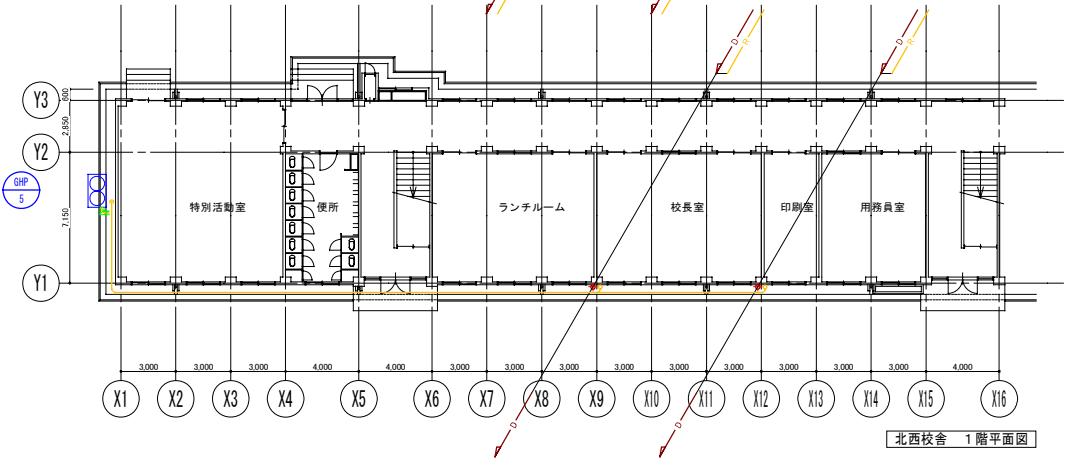
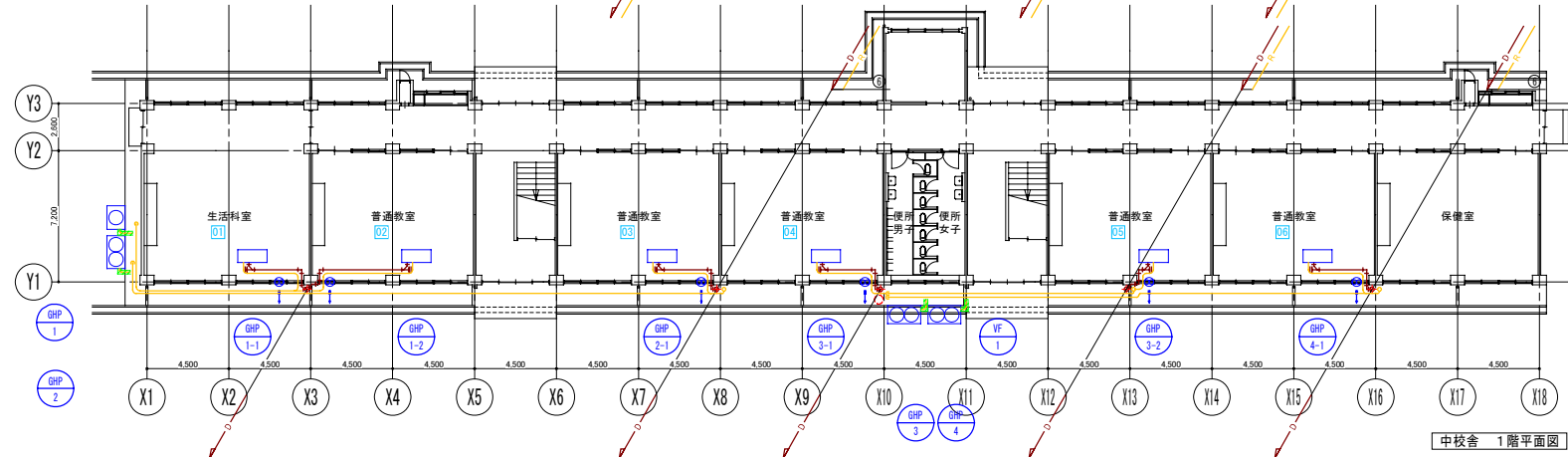
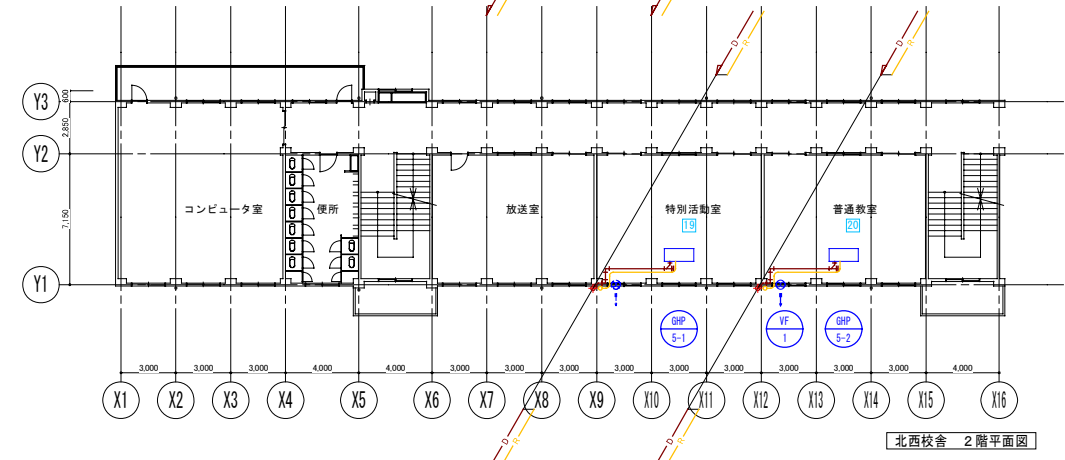
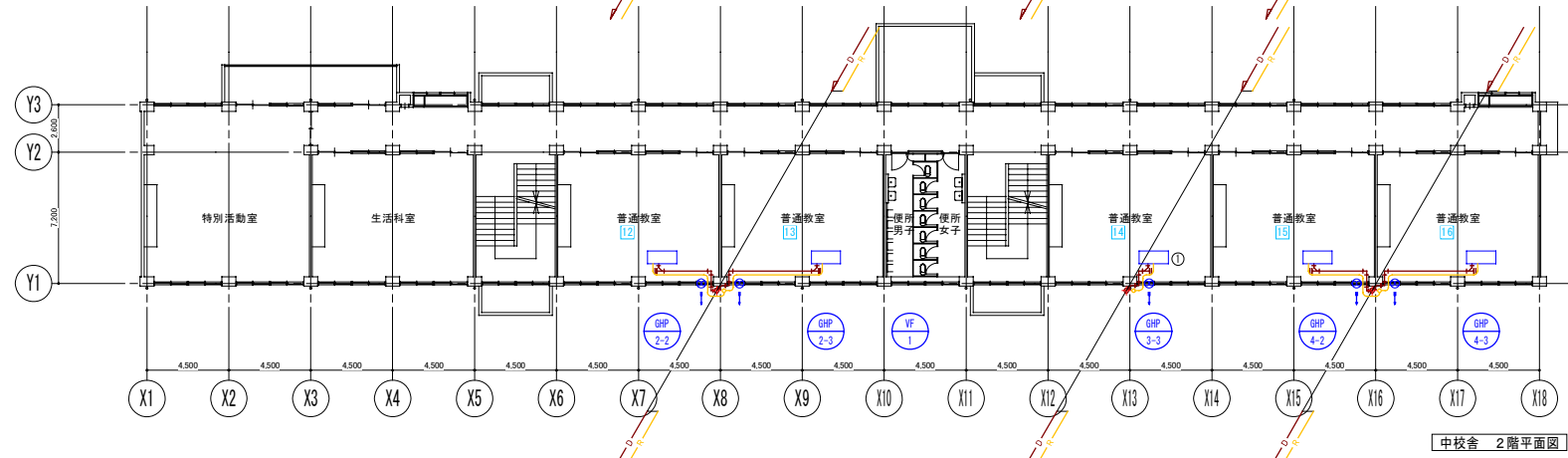
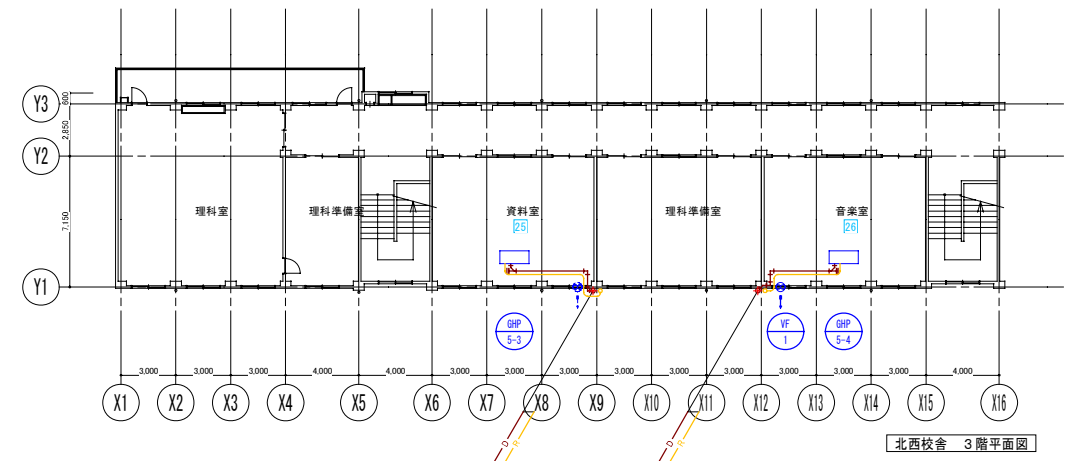
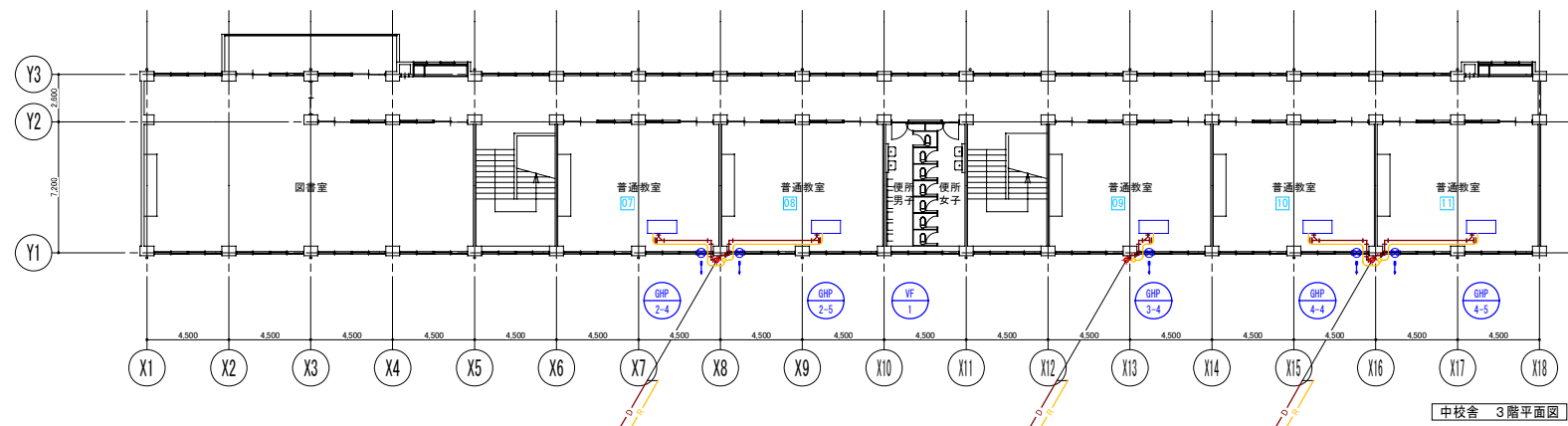
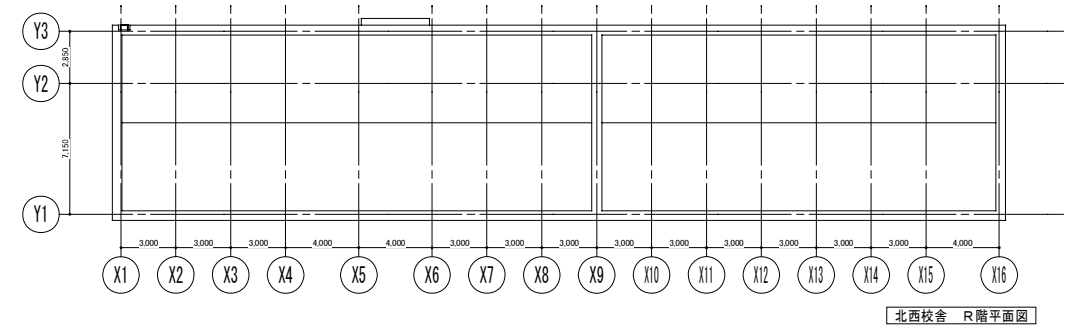
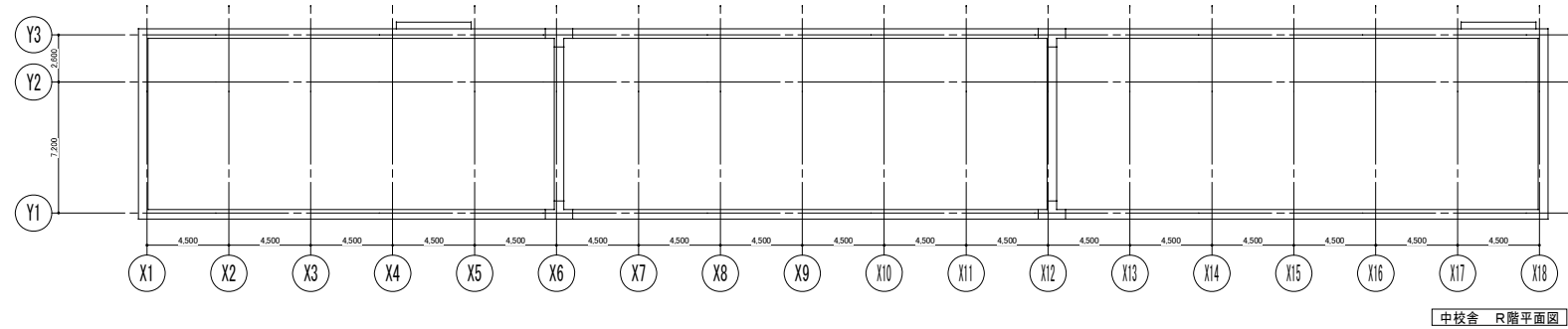
京都市 095 太秦小学校 工事完成図
 機械設備工事 縮尺 1/300.1/200
 練成 練成補佐・保原 保原 平成18年8月
 配管図(ガス配管図) No.2

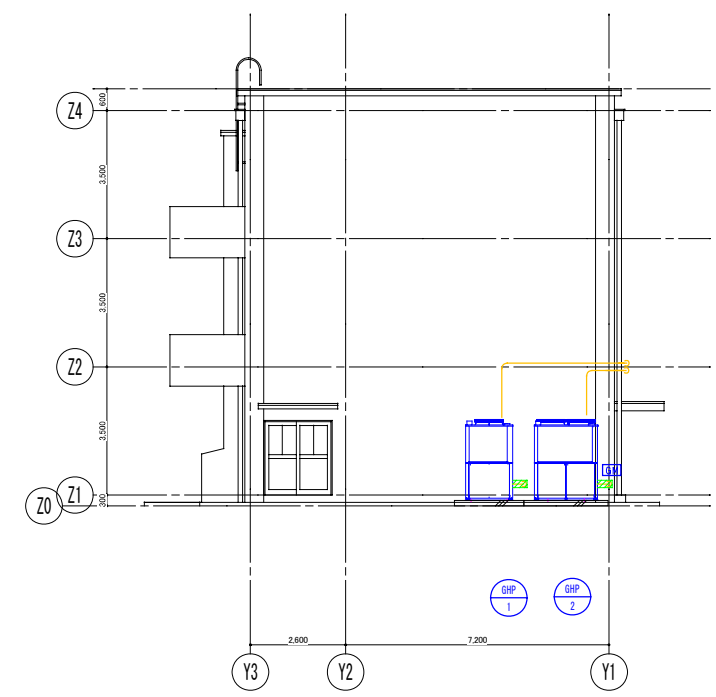


配置図 S:1/300

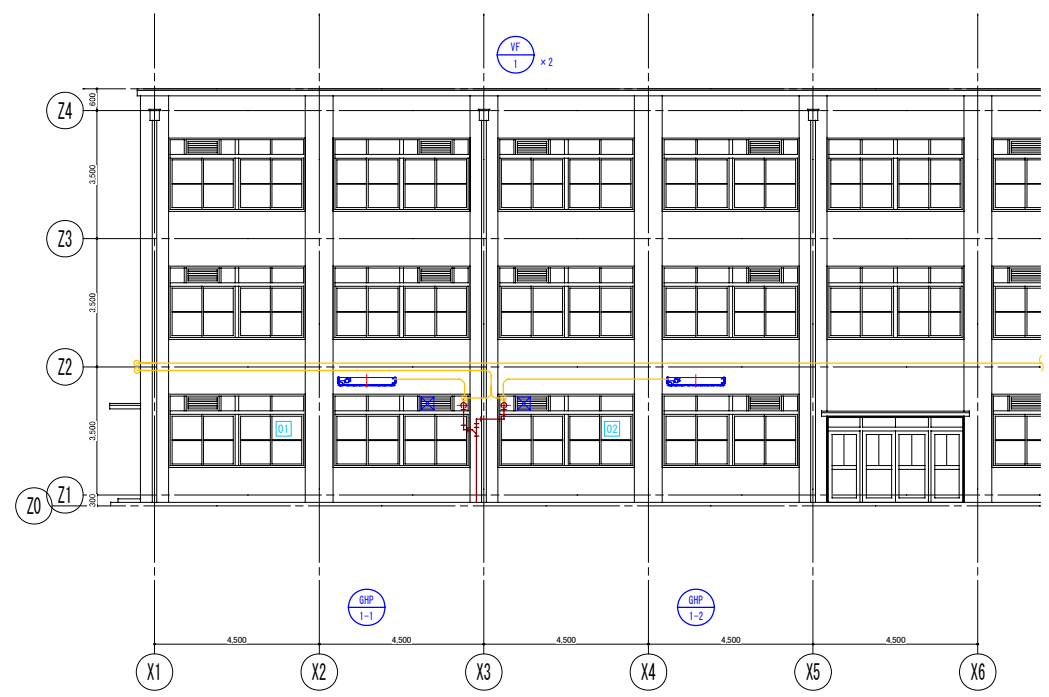
凡例
 — 新設配管
 - - - 既設配管



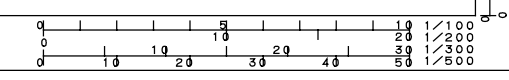
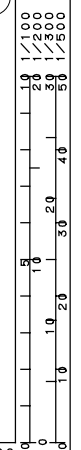
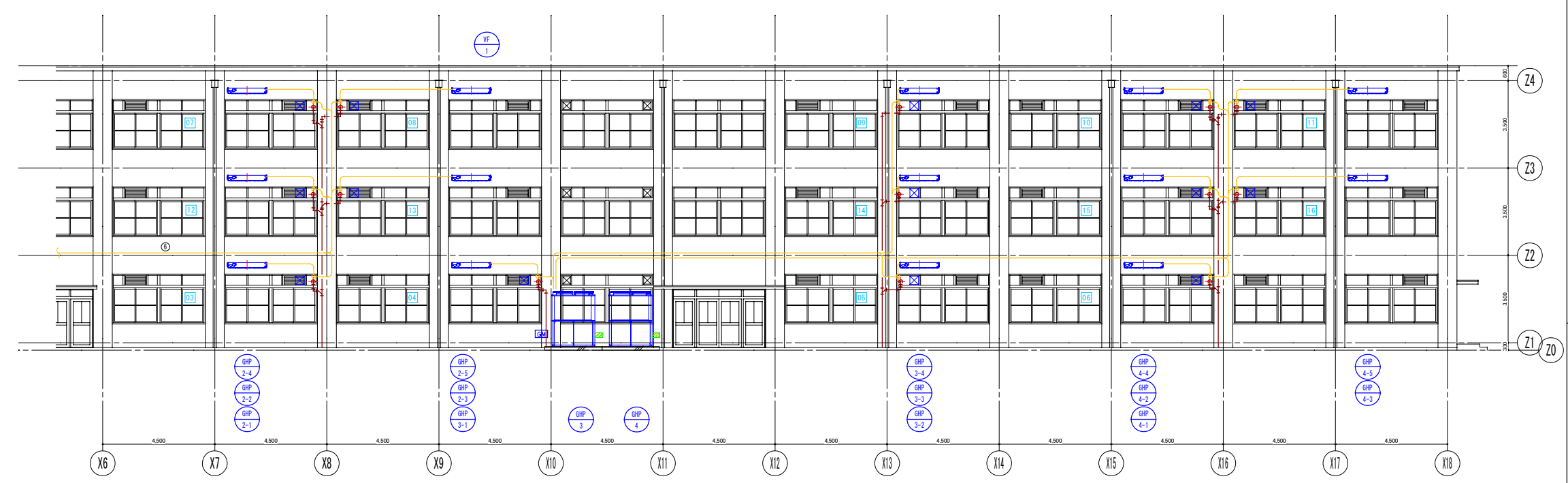


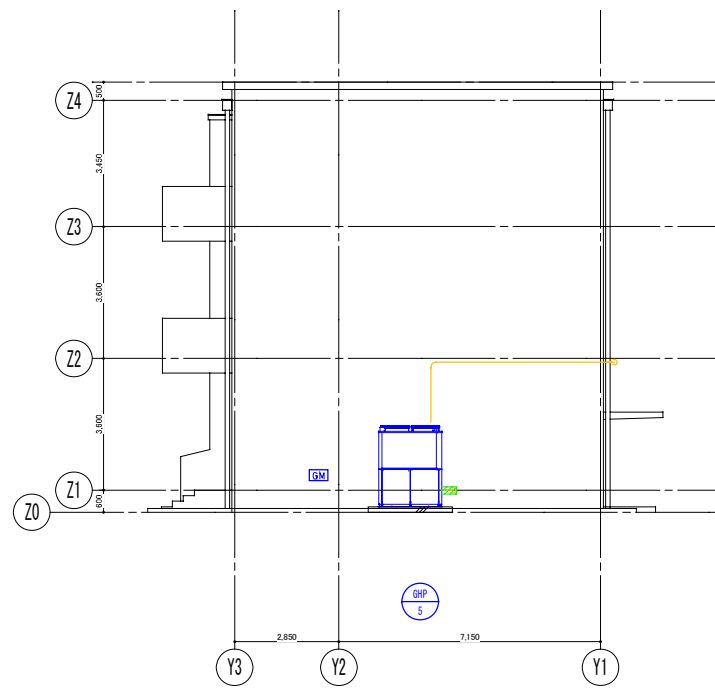


中校舎 西側立面図

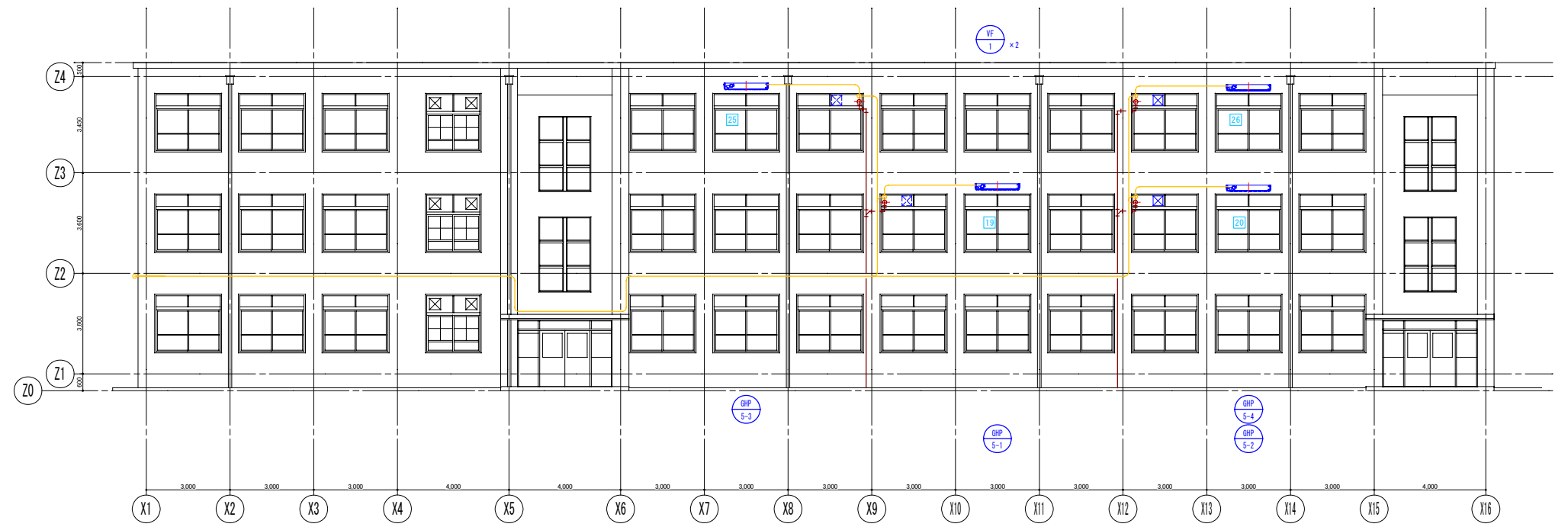


中校舎 南側立面図

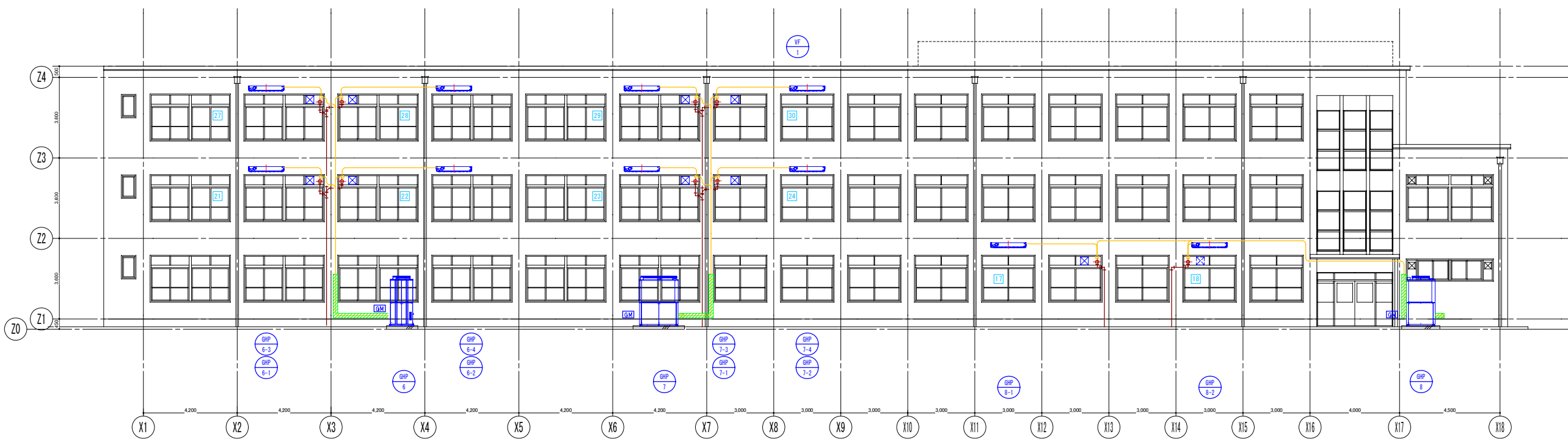




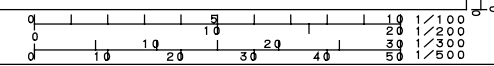
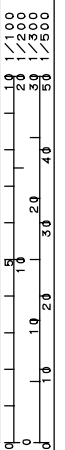
北西校舎 西側立面図

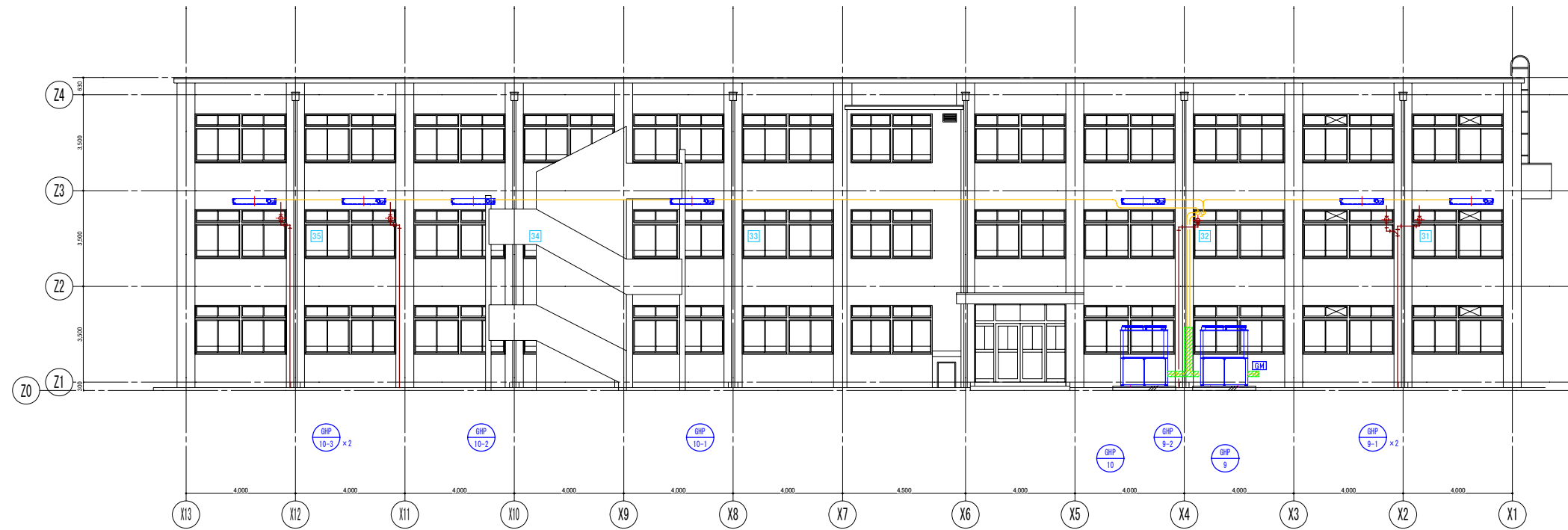


北西校舎 南側立面図



北東校舎 南側立面図

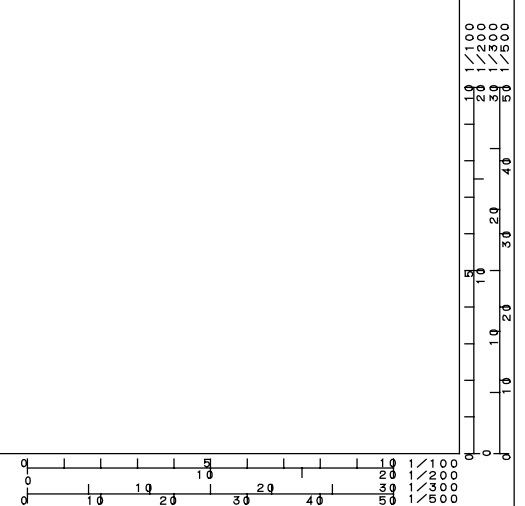




南校舎 北側立面図



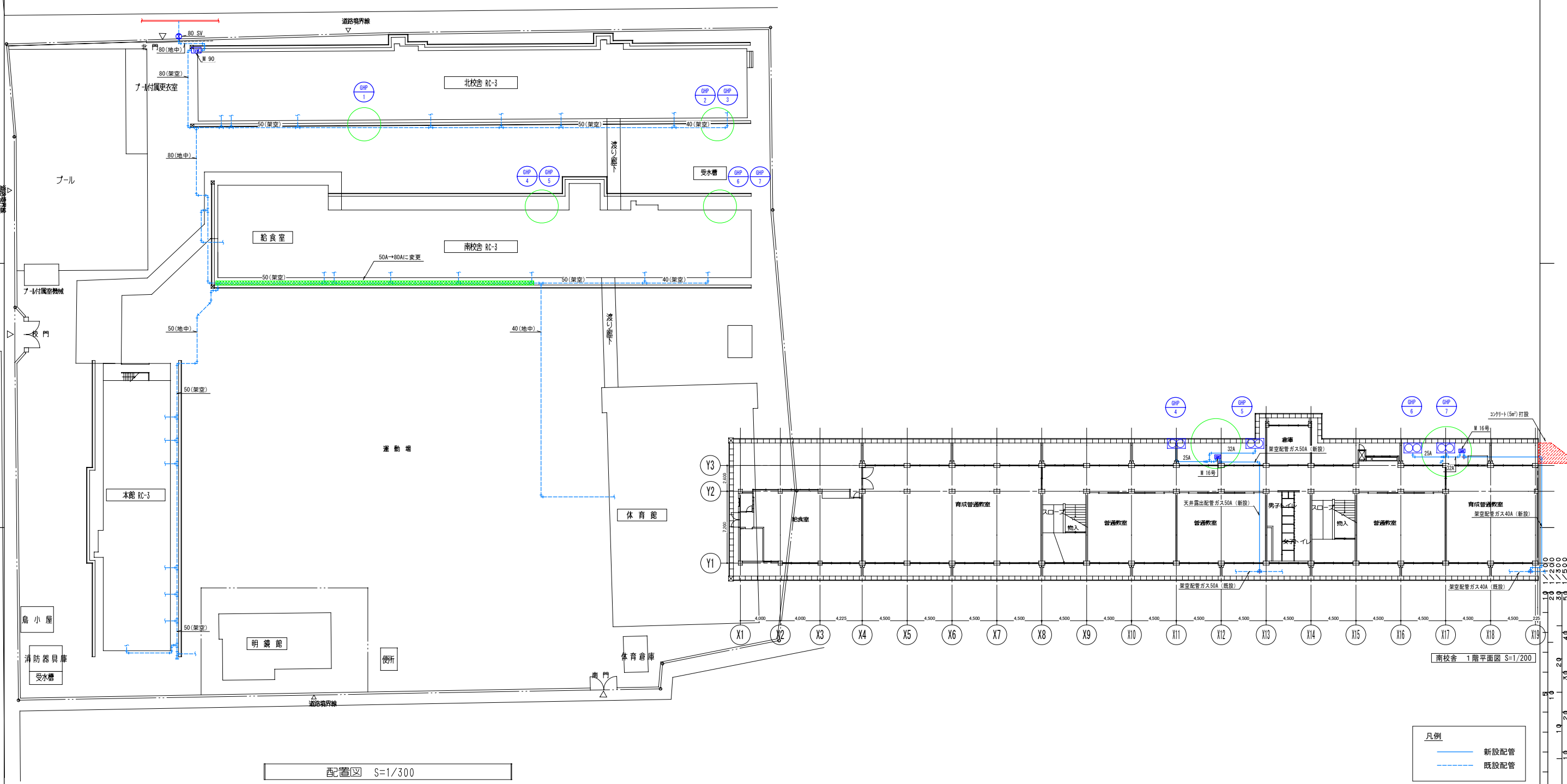
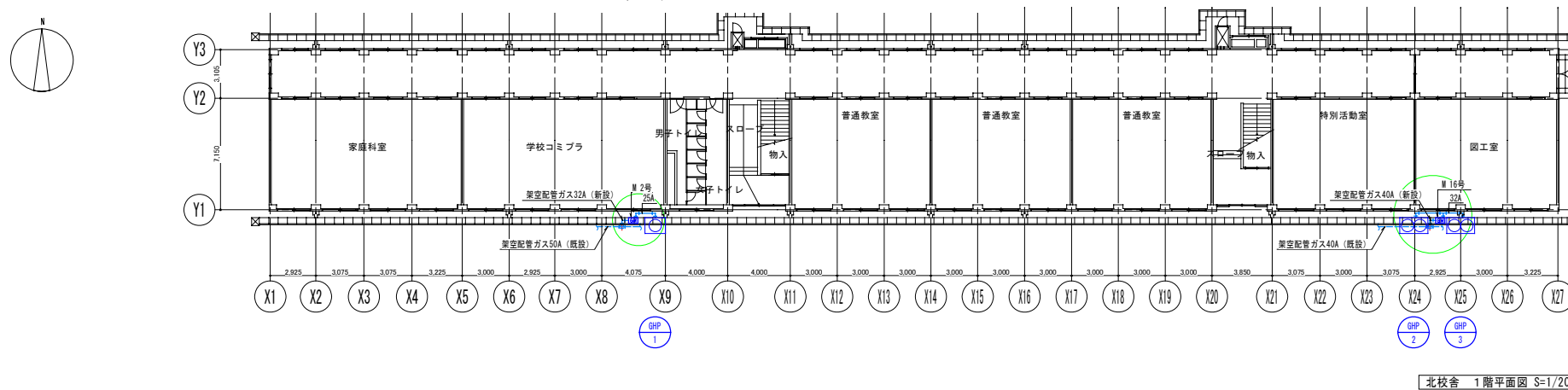
南校舎 南側立面図



【京都市立小中学校耐震化PFI事業】

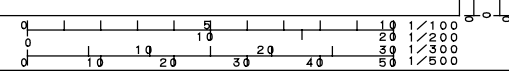
要求水準書 資料3 PFIエアコンの位置図 (鏡山小学校)

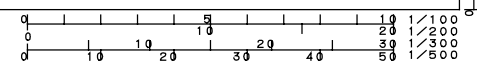
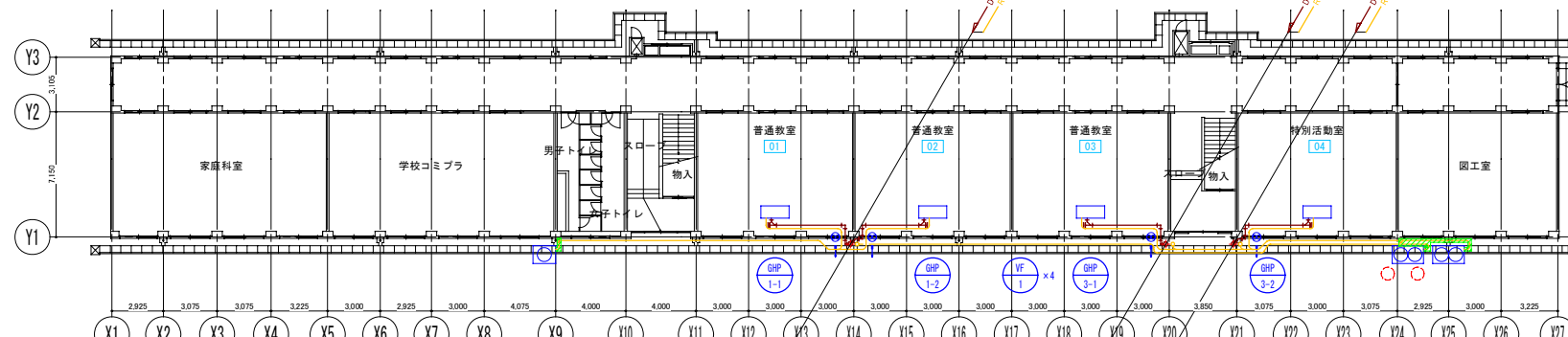
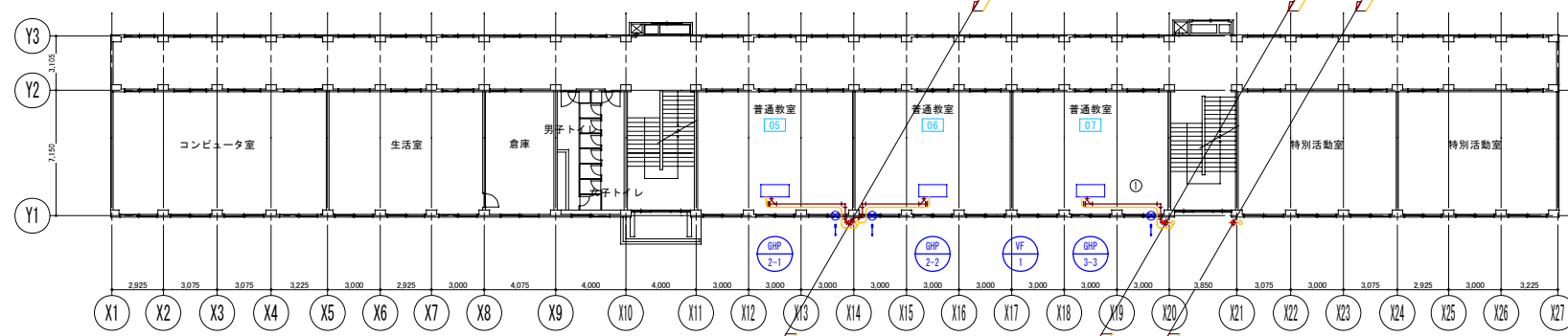
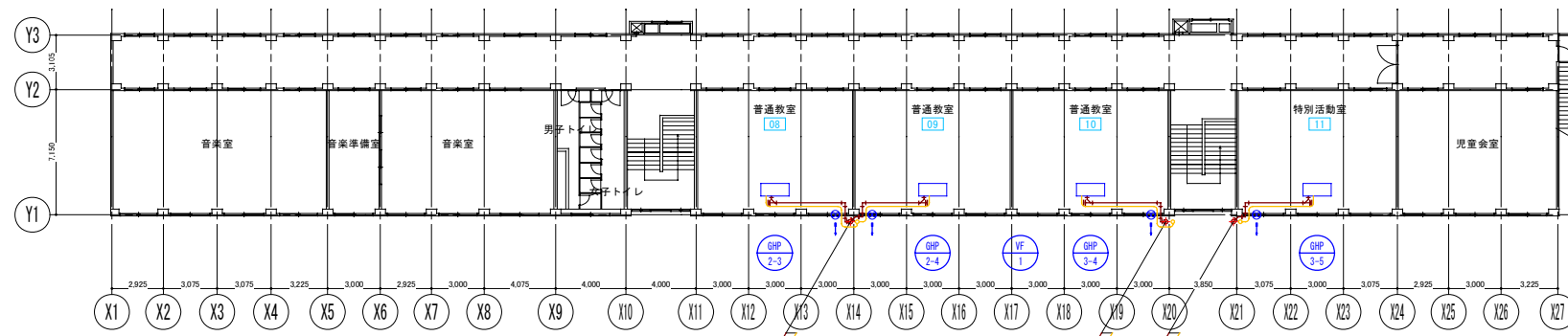
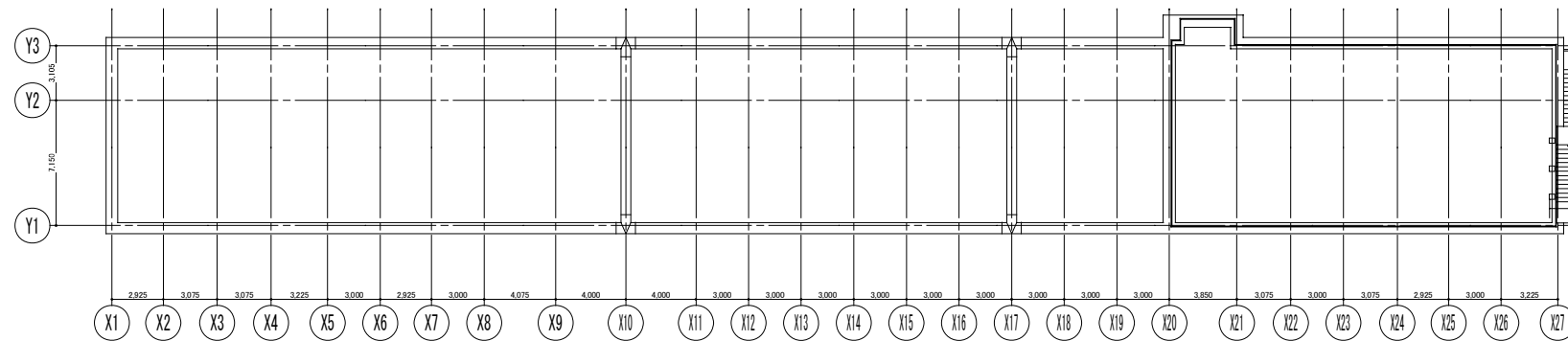
京都市	075 鏡山小学校	工事完成図
機械設備工事	縮尺	1/300.1/200
	縮尺	縮尺補正・係数 係数
		平成18年8月
配管図(ガス配管図)		No.2



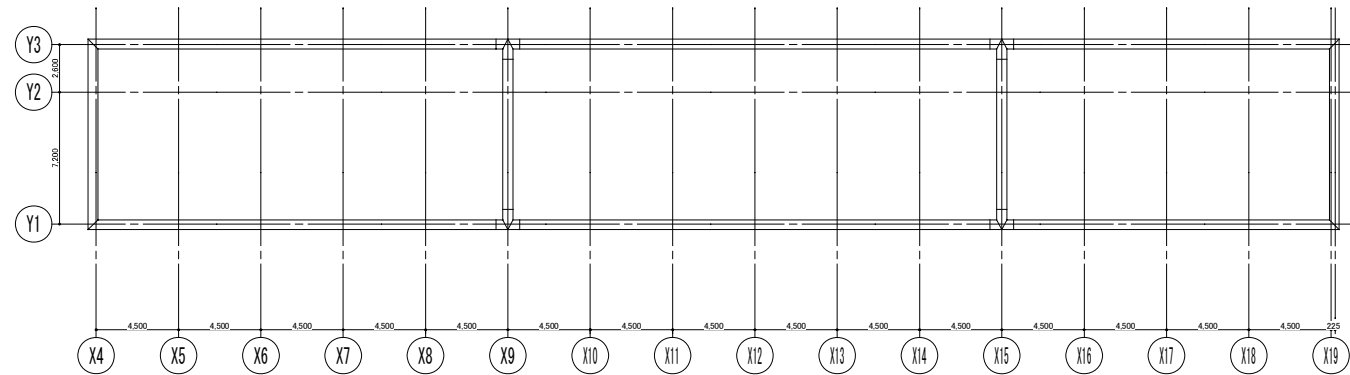
凡例

—	新設配管
—	既設配管

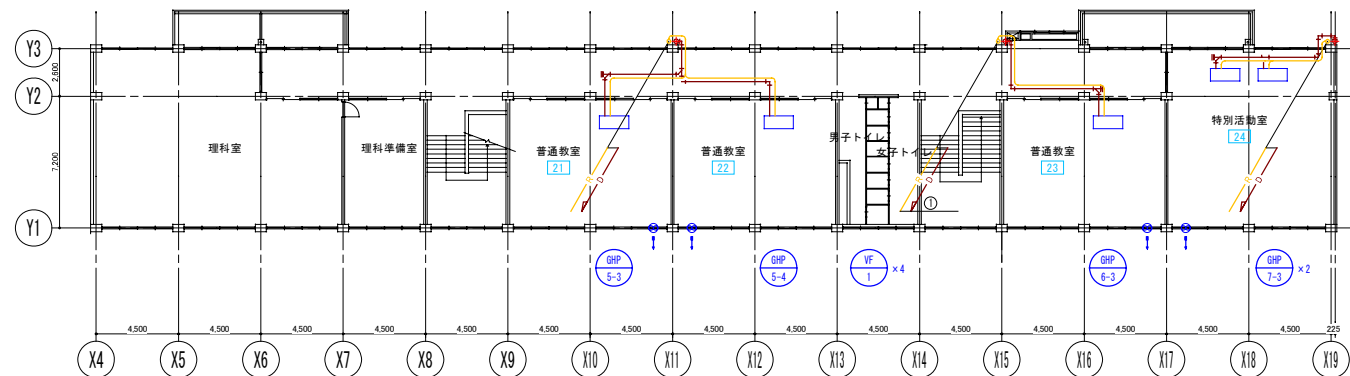




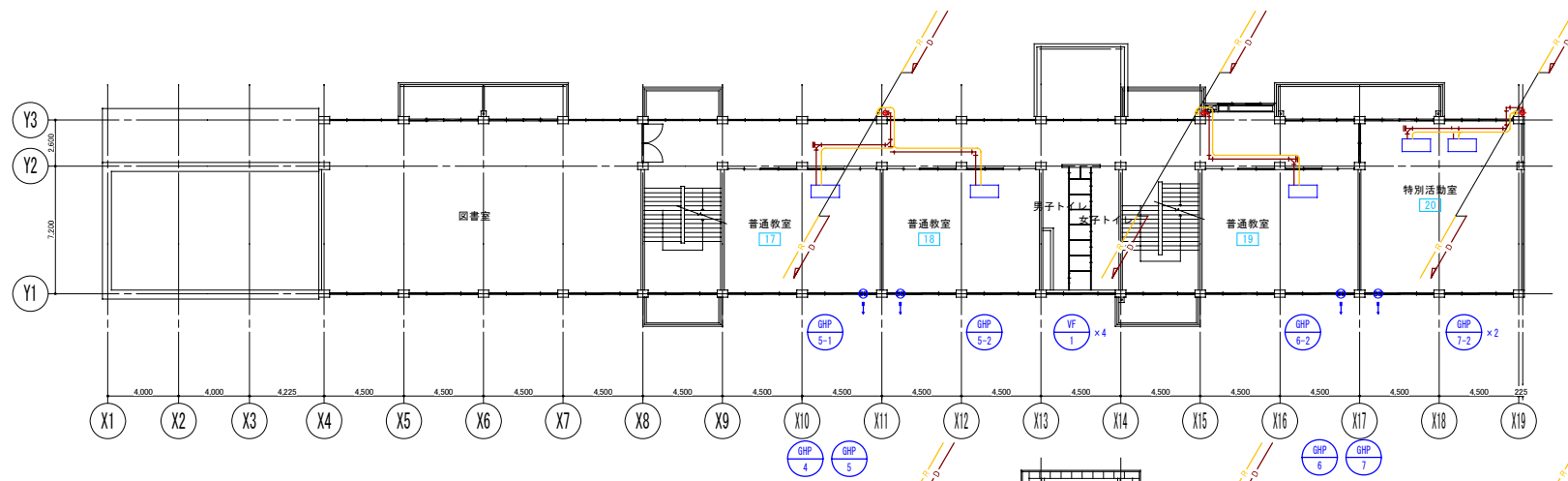
0
10
20
30
40
50
0
10
20
30
40
50



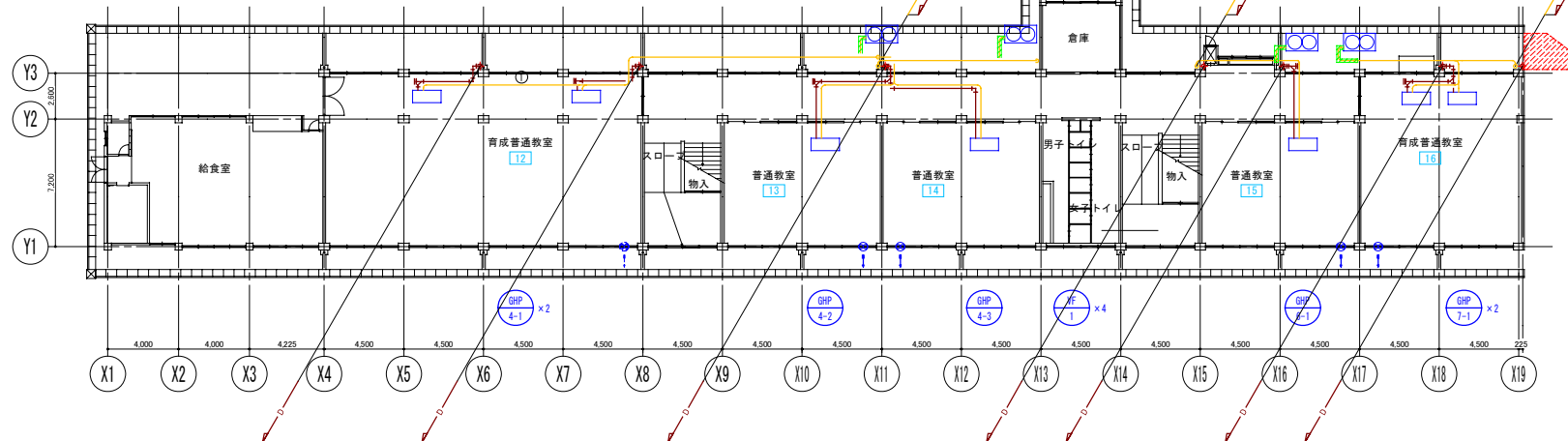
南校舎 R階平面図



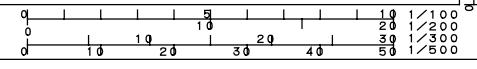
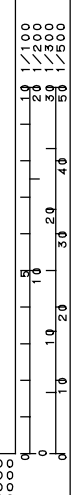
南校舎 3階平面図

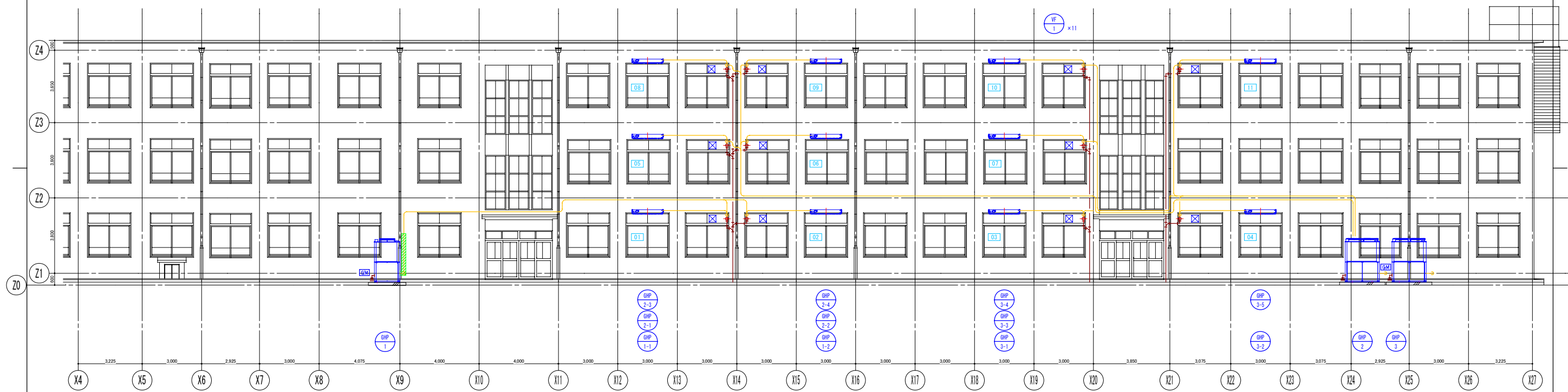


南校舎 2階平面図

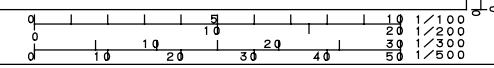


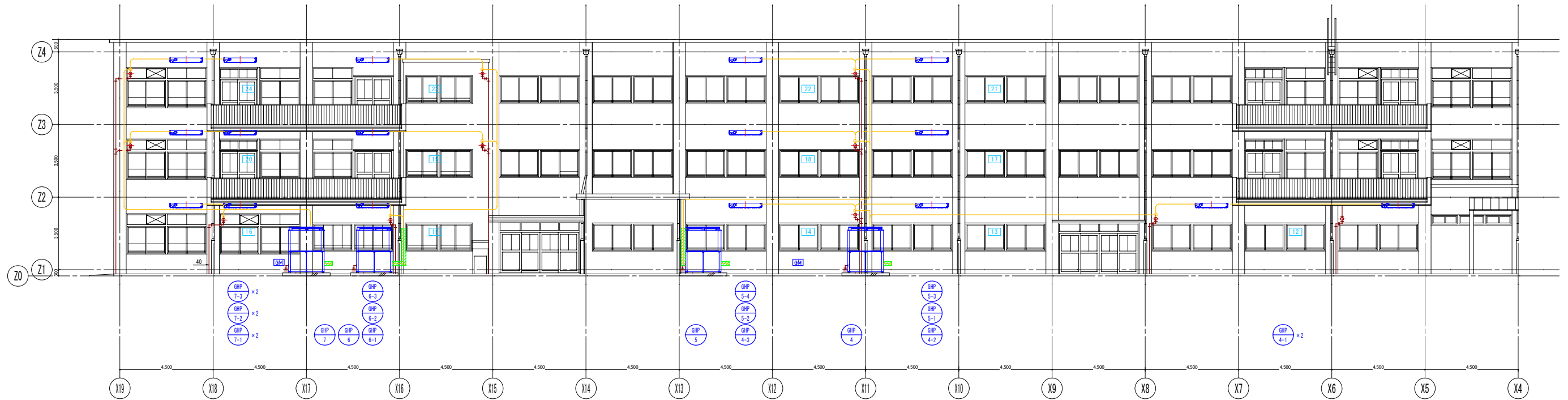
南校舎 1階平面図



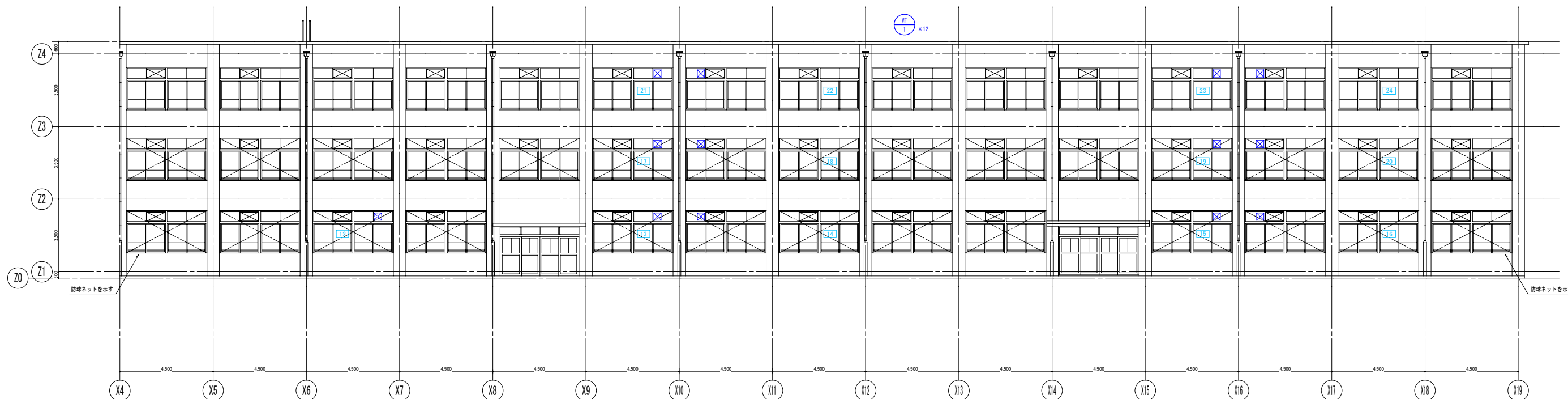


北校舎 南側立面図





南校舎 北側立面図



南校舎 南側立面図

